

902, 906, 908

Compact Wheel Loaders



	902	906	908
Net Power	34 kW/46 hp	45 kW/60 hp	61 kW/82 hp
Operating Weight	4280 kg	4960 kg	6040 kg
Nominal Bucket Capacity	0.6 m ³	0.8 m ³	1.0 m ³

Caterpillar® 902, 906 and 908 Compact Wheel Loaders

Designed, built and backed by Caterpillar to deliver exceptional performance and versatility, ease of operation, serviceability and customer support.

Ease of Operation

Operator comfort and easy operation are designed into every aspect of the cab. The operator can easily see the work being done. Combined with the VersaLink loader linkage and contoured hood, the Compact Wheel Loader has unmatched viewing to the ground. Economically designed joystick and low effort pilot hydraulics reduce fatigue and increase comfort. Three cab options are available: Standard, Comfort and Deluxe plus two canopy options.

pg. 4

Power Train

Two speed closed loop hydrostatic transmission delivers smooth transition from full rimpull to runout. Precise inching control and smooth acceleration and deceleration, minimises operator fatigue. **pg. 4**

Patented VersaLink Loader Linkage

A new Patent loader linkage gives the Compact Wheel Loader unsurpassed versatility and stability. The single piece boom style lift arm design offers exceptional strength, rigidity and visibility.

pg. 5

Built for tough work

The Compact Wheel Loader is built to the same high standards as the larger Caterpillar wheel loaders. This machine delivers Cat reliability, durability and efficient operation, even in the toughest working conditions.



Low sound emission package available.



Serviceability

The Compact Wheel Loader is designed for quick and easy serviceability. Tilt-up engine enclosure and side service doors give exceptional access to major components. Hinged hydraulic oil cooler provides easy access for cleaning. Vertically mounted, Caterpillar spin-on filters are easy to reach for fast maintenance. S•O•Ssm oil analysis ports for engine oil and hydraulic fluid, as well as ten hydraulic test ports are standard. Eco-drains are also available.

pg. 5

Work Tools

A broad range of Caterpillar Work Tools have been developed specifically for Caterpillar Compact Wheel Loaders to deliver exceptional performance, versatility and serviceability. The integrated QuickLock hydraulic coupler allows the operator to quickly change from one work tool to another.

pg. 6

Reliability and Durability

Quality and reliability is built into every part of the machine. The same standards and component quality that are used in larger machines are also applied to Compact Wheel Loaders.

pg. 7

Customer Support

Caterpillar dealers offer unmatched customer support, with excellent warranty programs and fast parts availability resulting in maximum uptime and minimum repair costs. Equipment maintenance services help optimise machine performance and reliability.

They include:

- Customer Support Agreements
- S•O•Ssm oil analysis
- Maintenance contracts
- Scheduled technical inspections.

Equipment management services help optimise profits.

They include assistance with:

- Machine and work tool selection
- Rental and leasing
- Purchasing and financing
- Owning and operating cost management

pg. 7



Operator Station

Comfortable, world class offers unmatched ease of operation

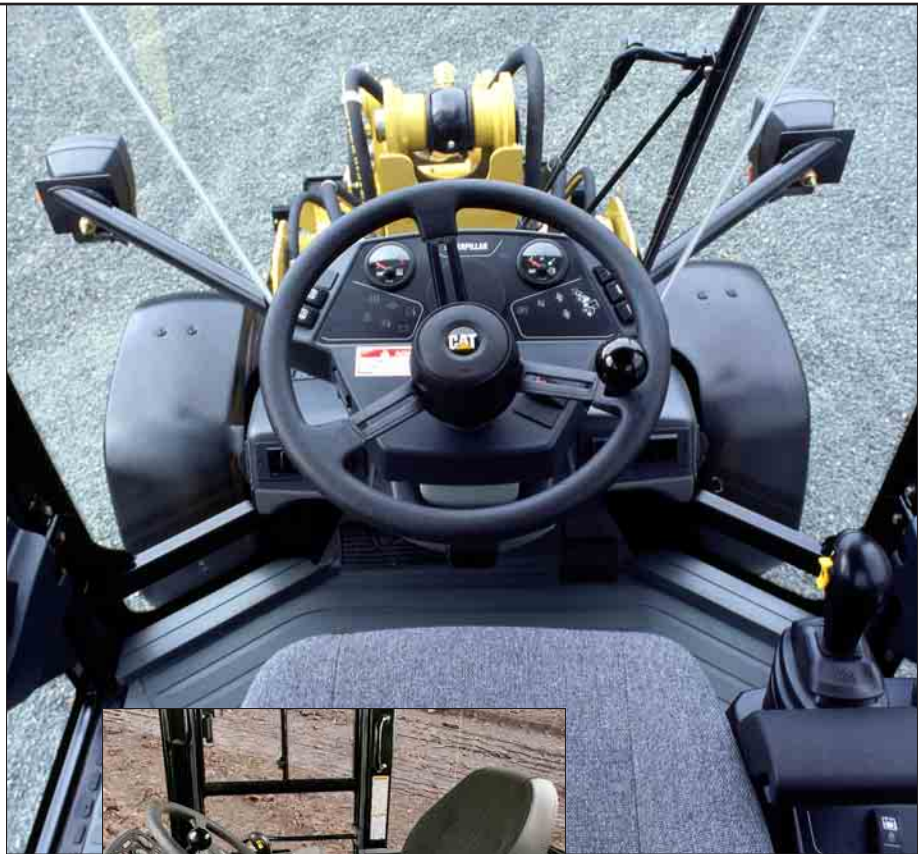
Excellent Viewing in all directions is made possible with large, floor length windows, a compact dash, a contoured hood and the narrow VersaLink loader linkage.

Low effort pilot hydraulics and an ergonomically designed joystick with adjustable wrist rest minimizes fatigue and maximize comfort for operator. The moulded-in Forward/Neutral/Reverse switch is intuitive to use.

Spacious cab has plenty of storage area and is equipped with with many convenience features:

- Fully adjustable suspension seat
- Suspended pedals and flat floor
- Ground level door releases
- Three-speed fan with eleven vents
- Front and rear wet wipers
- Cup holder and coat hook
- Auxiliary power sockets
- Lockable tool box

Easy to read dash has long life LED display and sealed switches for years of dependable service. Dash includes fuel level and hydraulic oil temperature gauges for convenience.



Power Train

Caterpillar hystat power train delivers aggressive performance and easy operation.

Two-speed closed-loop hydrostatic transmission delivers smooth transition from full rimpull to runout. Precise inching control and smooth acceleration and deceleration, minimises operator fatigue.

Limited slip front differential provides excellent traction in a wide variety of working conditions. An optional limited slip rear differential allows the machine to stay productive even in the worst underfoot conditions.

Rear axle oscillates 11 degrees, giving the machine superior control, stability and traction for all operations, especially grading work.

Unique brake reservoir is self-replenishing for maintenance free service.

Patented VersaLink Loader Linkage and QuickLock Hydraulic Coupler

Robust design for superior performance and versatility.

Narrow Design of the VersaLink Loader Linkage provides excellent viewing to each side of the QuickLock coupler and work tool. Operators can easily see loading and dump targets.

Parallel lift capability allows precise pallet handling, eliminating the need to adjust level whilst raising the forks. Operators can concentrate on load placement rather than load levelling.

Long reach lets the operator place loads more easily, while protecting the tires and front frame.

Optimized linkage design and powerful hydraulics result in excellent breakout force for buckets and high lift force with forks. Fast controllable hydraulics provide short cycle times.

Large contact area. of the QuickLock hydraulic coupler absorb impact loads. Wedges with check valves keep work tools secure and tight.



Serviceability

Quick access and superior design make the 902, 906 and 908 Compact Wheel Loader easy to service.

Ground Level access is unmatched due to the high opening tilt-up engine enclosure and side service doors. All major components and service points can be easily accessed from the ground.

- Vertically mounted, spin-on hydraulic oil filter, fuel filter with water separator and engine oil filter
- Heavy duty braided wiring harness protects the electrical system.
- Radiator fin design is less susceptible to plugging
- Hinged hydraulic oil cooler for easy cleaning
- Hydraulic oil sight gauge and vented hydraulic system
- Air cleaner service indicator is easy to use and reliable.

S•O•S valves are standard for easy oil sampling to help protect the engine and power train.

Caterpillar extended life coolant is standard, offering lower service intervals and reduced maintenance costs.

Centralised lube points for major components

2000-hour hydraulic oil service interval under normal working conditions.



Work Tools

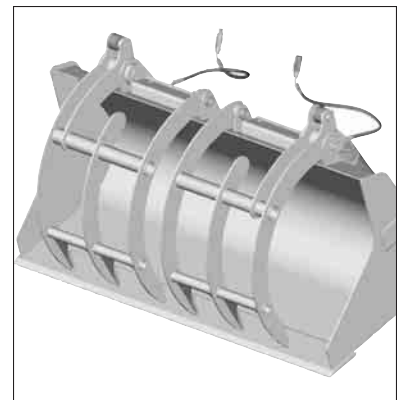
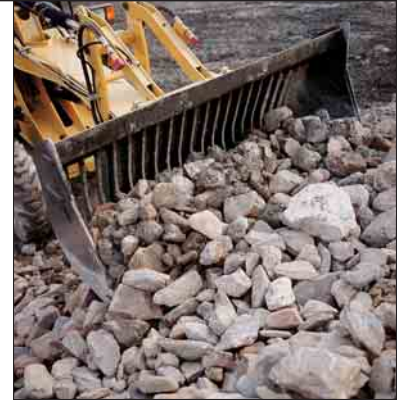
Choose from a wide variety of tools designed specifically for Compact Wheel Loader

Work Tools. Caterpillar designed work tools extend the versatility of the 906 Compact Wheel Loader. Built for performance and durability, the full range of Compact Wheel Loader work tools deliver high productivity, long service life and excellent return on investment.

- General Purpose Bucket
- Multi Purpose Bucket
- Light Material Bucket
- Side Dump Bucket
- Stone Sieve Bucket
- High Dump Bucket
- Pallet Forks
- Angle Broom
- Pickup Sweeper
- Material Handling grapple bucket

QuickLock Hydraulic Coupler. The operator can make fast, easy work tool changes from inside the cab. Solid connections are assured every time with the QuickLock hydraulic coupler.

- Opposing wedge design
- Constant hydraulic pressure compensates for wear
- Check valves maintain tight engagement
- Rugged design has large contact area to absorb loads and minimise stress



Durability and reliability

High quality components and assembly techniques combine to ensure optimum machine lifetime productivity.

Paint finish. Cat Compact Wheel Loaders undergo an extensive twenty four stage 'E-coat' process. Zinc based electro plated undercoat and polyurethane top coat provides unrivaled corrosion resistant properties. The paint colour can be custom tailored to customer requirements.

Wiring. The heavy duty wiring is braided to give exceptional protection against damage. The wiring is also colour coded for simple component identification. Electrical connectors are designed to prevent the ingress of moisture to give maximum reliability.

Cat Hoses. Cat XT3 high pressure hoses are rated at 2.5 times the industry recommendation to enable operation in severe conditions.



Customer Support

Complete services provided by the world's largest dealer network

Selection. Make detailed comparisons of machines before purchasing. What are the job requirements? What production is needed? What is the true cost of lost production? Your Cat dealer can give you precise answers to these questions

Purchase. Consider the financing options your Cat dealer offers as well as day-to-day operating costs. Dealer support services that can be included in the cost of the machine to yield lower equipment owning and operating costs over the life of the machine.

Maintenance. Chose from a wide range of maintenance services at the time of machine purchase. Repair option programs guarantee the cost of repairs up front and help avoid unscheduled repairs that can cost unnecessary time and money.

Replacement. Repair, rebuild or replace? Your Cat dealer can help you evaluate the cost involved to make the right choice.



Product Support. You will find nearly all parts at our dealer parts counter. Cat dealers utilizes a worldwide computer network to find in-stock parts to minimise downtime. Additionally, Caterpillar offers a line of genuine remanufactured components which can help lower repair costs.

Engine

		902	906	908
	rpm	2600	2600	2200
Gross power	kW/hp	36/48	47/63	64/86
Net power	kW/hp	34/46	45/60	61/82

Dimensions

Bore	mm	84	97	100
Stroke	mm	100	100	127

Net power rating per ISO 9249 or EEC 80/1269.

All Caterpillar Compact Wheel Loader engines meet U.S. EPA and European Union non-road emission regulations.

Power Train, Axles and Brakes

Closed-loop, two-speed hydrostatic single path transmission. Variable displacement pump and variable displacement motor, driving frame-mounted, fixed gear box.

Travel speed		902	906	908
Forward/reverse				
Low	km/h	7	7	7
High	km/h	20	20	20

Features

- Fixed front axle with limited slip differential and planetary gear reduction final drives
- 902 and 906 service and parking brake are combined in a single, dry-disc driveline brake
- 908 front and rear axles have enclosed, wet disc and outboard service breaks
- Brake meets ISO 3450:1996

Hydraulic System

		902	906	908
3rd valve flow	l/min	47	68	83
Main relief	kPa	23 500	23 500	23 500

Hydraulic Cycle Time

Lift	seconds	4.5	4.5	4.5
Dump	seconds	1.5	1.5	2.4
Lower, float (engine at high idle, rated load in a bucket)	seconds	3.2	3.2	3.2

Service Refill Capacities

		902 Liters	906 Liters	908 Liters
Cooling system		14	14	16
Fuel tank		74	74	85
Hydraulic system		66	66	66
Engine oil		8	8	8

ROPS/FOPS

Caterpillar cab, Rollover Protective Structure (ROPS) and Falling Objects Protective structure (FOPS)

ROPS meets the following criteria:

- ISO 3471-1:1986

FOPS meets the following criteria:

- ISO 3449:1992

Sound

Operator Sound. The operator sound level measured according to the procedures specified in ISO 6396 is 75 dB(A).

Exterior Sound. The labeled spectator sound power level measured according to the test procedures and conditions specified in 2000/14/EC is as following:

		902	906	908
Standard	dB(A)	101	101	102
Blue Angel	dB(A)	97	–	99

Operating Specifications

Machine with a full fuel tank, ROPS cab, 75 kg operator and standard tires.

		902	906	908
Operating weight (ISO 6016:1982)	kg	4280	4960	6040
Rated bucket capacity (ISO 7546:1983)	m ³	0.6	0.8	1.0
Hydraulic lift capacity, maximum	kN	35	41	44
Breakout force, bucket	kN	37	46	58
Rated operating load at full turn, bucket (ISO 5998:1986)	kg	1300	1515	1880
Straight tipping load, bucket (ISO 8313:1989)	kg	3000	3430	4380
Full turn static tipping load, bucket (DIN 24094)	kg	2600	3030	3759
Rackback, transport position	Degrees	50	53	56
Rated operating load at full turn, forks (EBN 474-3/DIN 24094, firm and level ground, 1.25 stability and 500 mm load center)	kg	1600	2015	2405
Tipping load at full turn, forks (transport 100 mm above ground)	kg	2000	2500	3116

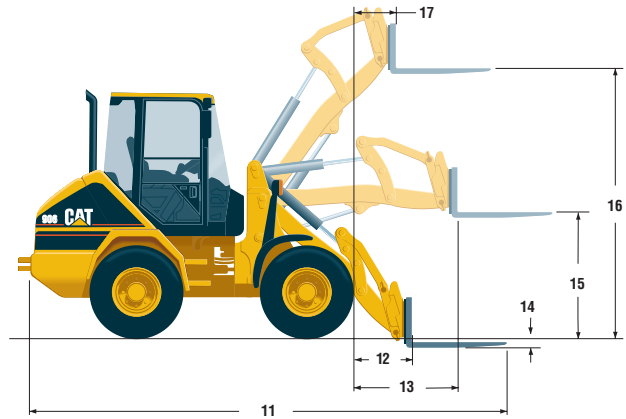
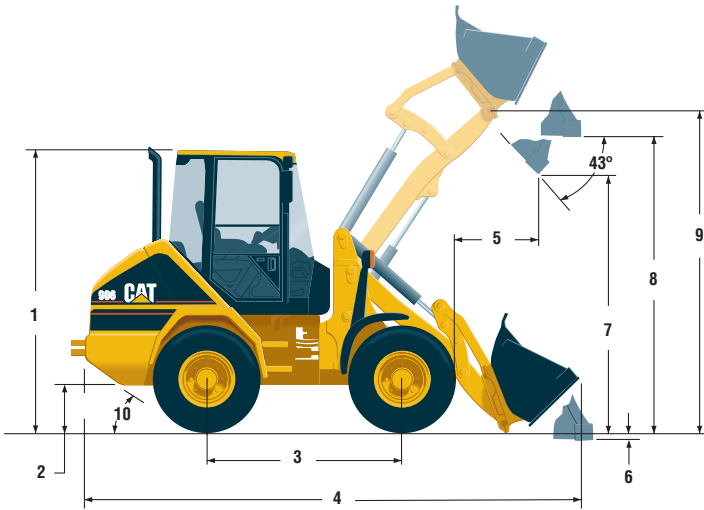
Maximum Material Densities

Based on ISO 7546:1983 and rated operating loads at full turn.

	Rated Capacity m ³	Dump Height mm	Maximum Material Density kg/m ³	Bucket Width mm
902				
General Purpose	0.6	2340	2100	1770
Multi Purpose	0.6	2340	1900	1770
Light Material	1.0	2205	1230	1870
High Dump	0.6	3300	2000	1770
Stone Sieve	0.6	2340	2050	1770
906				
General Purpose	0.8	2425	1850	1870
Multi Purpose	0.7	2425	1730	1870
Light Material	1.2	2280	1200	1940
High Dump	0.7	3490	2000	1870
Side Dump	0.7	2325	1850	1870
Stone Sieve	0.7	2425	2000	1870
908				
General Purpose	1.0	2637	1880	2050
Multi Purpose	0.9	2648	2000	2050
Light Material	1.5	2429	1195	2050
High Dump	0.9	2595	1960	2050
Side Dump	0.9	2496	1880	2050
Stone Sieve	0.9	2637	2050	2050

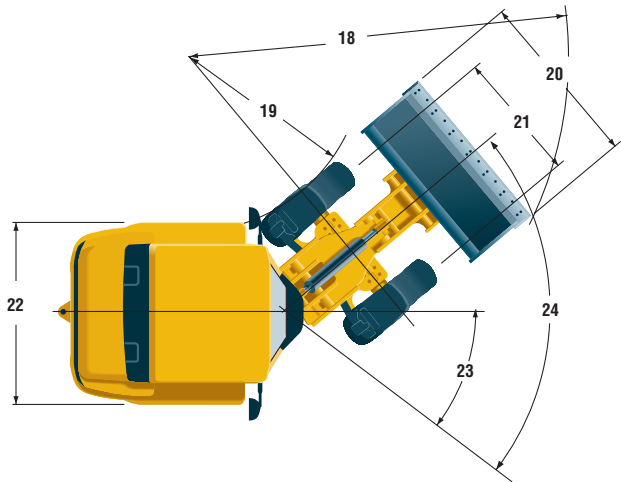
Dimensions

Dimensions shown are based on the machine equipped with standard tires and general purpose bucket. All dimensions are approximate.



Standard Tires

902	12.5 - 18
906	12.5 - 20
908	14.5 - 20



		1	2	3	4	5	6	7	8	9	10	11	12
902	mm	2650	385	2000	4915	720	50	2340	2820	3025	34°	5590	650
906	mm	2680	420	2000	5040	790	85	2425	2930	3135	34°	5590	770
908	mm	2770	490	2200	5500	900	90	2645	3175	3385	34°	6360	835
		13	14	15	16	17	18	19	20	21	22	23	24
902	mm	1170	25	1400	2890	490	3815	1660	1770	1350	1755	43°	86°
906	mm	1260	55	1420	3010	540	4100	1870	1870	1400	1755	40°	80°
908	mm	1370	10	1550	3255	600	4475	2060	2050	1575	1960	40°	80°

Standard Equipment

Standard equipment may vary. Consult your Caterpillar dealer for specifics.

Air Cleaner, radial seal, with visual indicator
Alternator, 55-amp
Antifreeze, extended life (-35°C)
Battery, 12-volt, 750 CCA
Bucket level indicator
Cab, ROPS, sound suppressed and pressurised with:
 digital service hour meter
 gauges, fuel level and hydraulic oil temperature
 ground level door releases
 heater/defroster with 11 vents
 lockable tool box
 power sockets, auxiliary
 radio antenna
 right armrest
 seat belt, retractable
 warning indicators, for major systems
 wet wiper, front and rear
 wiring for radio and rotary beacon

Engine hood and side doors, lockable
Front limited slip differential
Hitch, recovery
Hydraulic oil level sight gauge
Proportional Auxiliary Hydraulic Circuit
QuickLock Hydraulic Coupler
Remote jump start terminal (908 only)
Scheduled oil sampling, S•O•Ssm ports

Optional Equipment

Optional equipment may vary. Consult your Caterpillar dealer for specifics.

Air conditioning
Alternator, 90-amp
Antifreeze, -50°C
Battery, 12-volt, 900 CCA
Biodegradable hydraulic oil
Cab, comfort, including:
 fabric suspension seat
 sliding window, left hand side
 tilt steering wheel and turing ball
Cab, deluxe, including:
 comfort cab options
 sliding window, right hand side
 electric rear window defroster
 left armrest
Canopy, ROPS, standard
Canopy, ROPS deluxe
Counterweight
 902 – 110 kg
 906 – 150 kg
 908 – 200 kg
Creeper control
Custom Colour

EC conversion arrangement
Eco-drain valves, fuel and hydraulic
Engine block heater, electric
Mudflaps, front (906 only)
No front fenders
Rear limited slip differential
Return to dig
Reverse alarm
Service instructions
Sound suppression, Blue Angel
TUV conversion arrangement
Tire options (see price list)
Warning beacon
Worklights, two front, two rear – cab mounted
Work tools
 Buckets
 Forks
 Brooms

902, 906, 908 Compact Wheel Loaders

HEHL2871 (01/2003) hr

Materials and specifications are subject to change without notice.
Featured machines may include additional equipment.
See your Caterpillar dealer for available options.

www.CAT.com
© 2003 Caterpillar

CATERPILLAR[®]