

Hiab XS 144

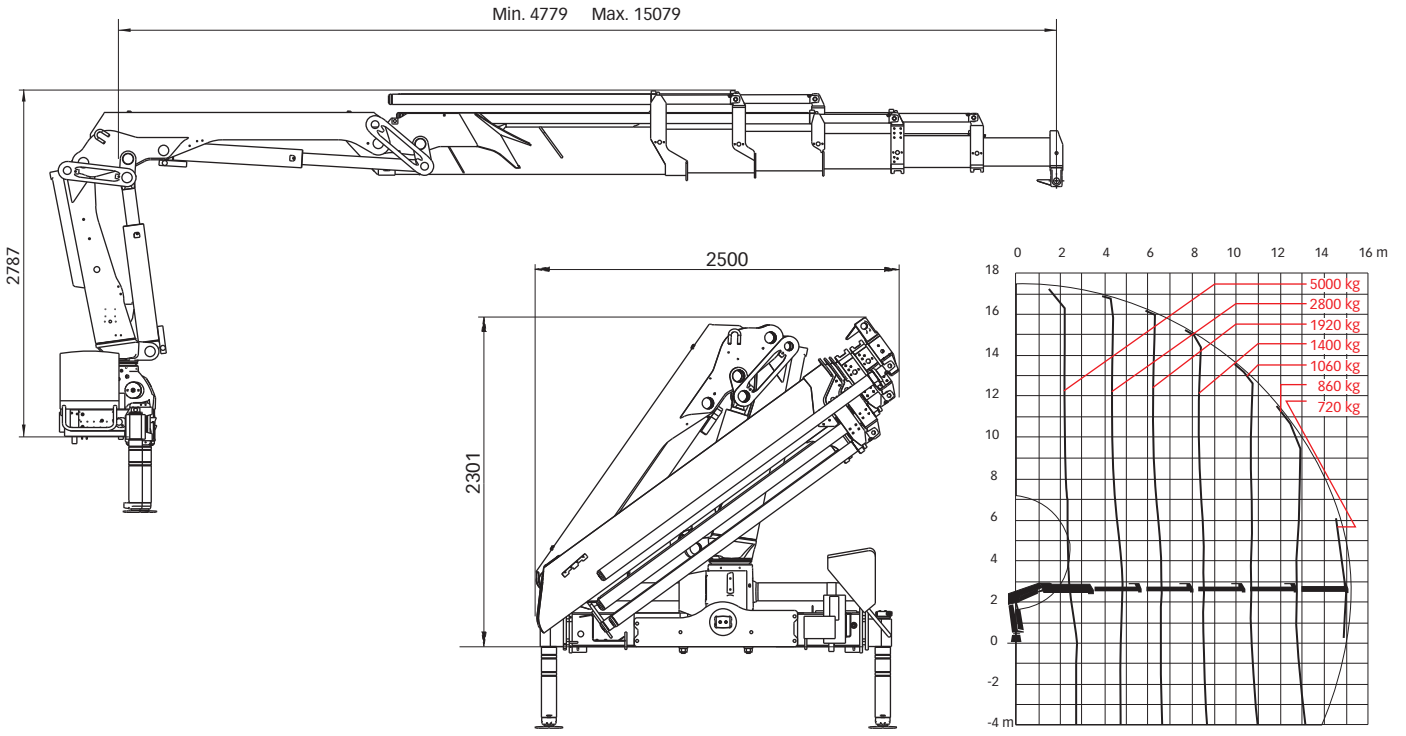
Range 11-14 tm



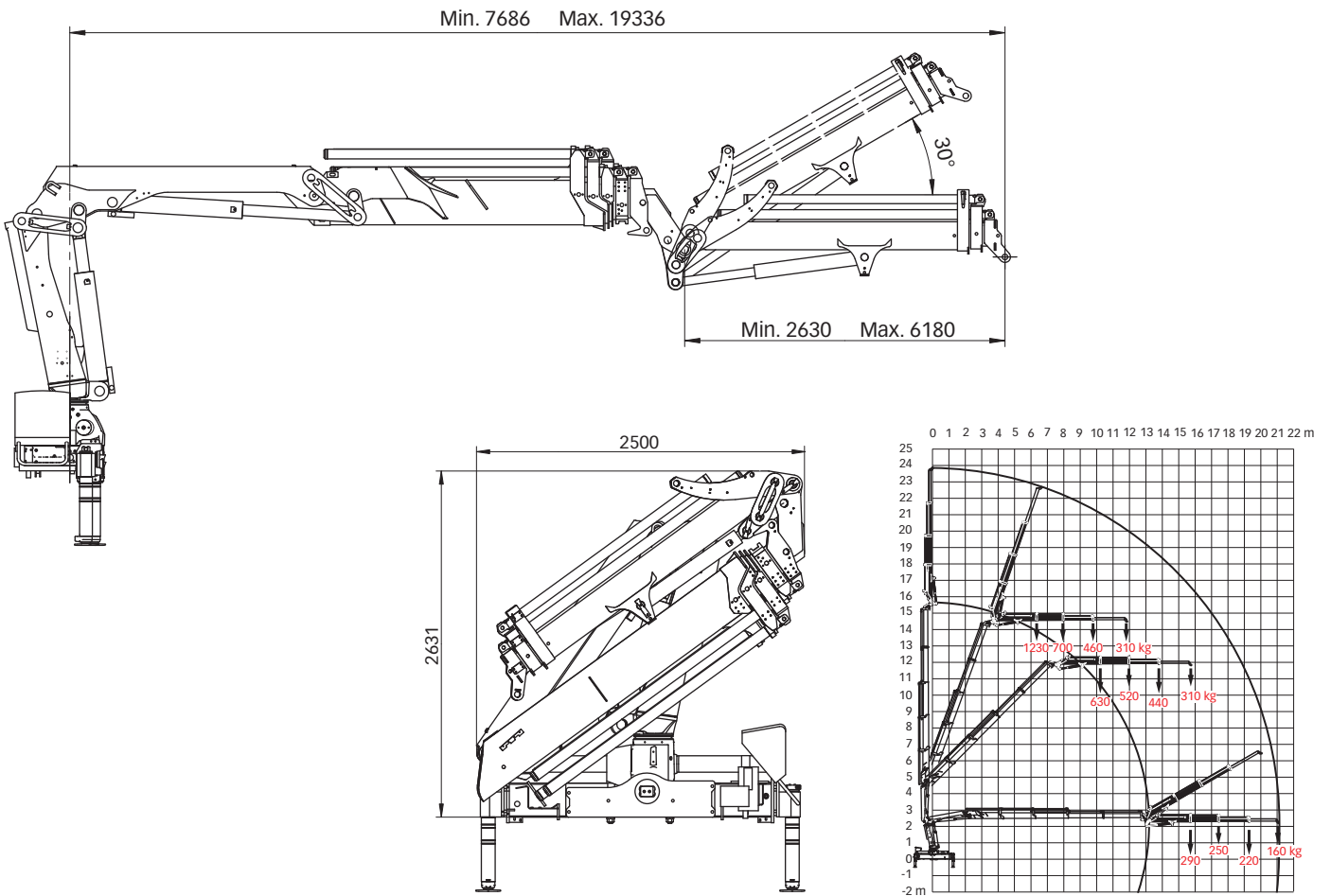
Hiab XS 144 Basic data

Technical data	B-3 CL	B-3 Duo	E-5 HiDuo	ES-3 HiPro	E-4 HiPro	E-5 HiPro
Max. lifting capacity (kNm)	115	131	128	127	120	118
Outreach - hydraulic extensions (m)	10.6	10.6	15.1	10.2	12.8	15.1
Outreach - manual extensions (m)	12.8	12.8	17.4	17.1	17.4	17.4
Outreach - jib (m)	-	-	-	-	19.3	-
Outreach / lifting capacity (m / kg)	3.0 / 3900	3.1 / 4300	2.6 / 5000	2.2 / 6000	2.5 / 5300	2.6 / 5000
	4.5 / 2600	4.5 / 2900	4.8 / 2700	4.3 / 3300	4.7 / 3000	4.8 / 2800
	6.3 / 1840	6.3 / 2000	6.6 / 1860	6.1 / 2300	6.5 / 2000	6.6 / 1920
	8.3 / 1360	8.2 / 1540	8.5 / 1340	8.0 / 1700	8.4 / 1500	8.5 / 1400
	10.3 / 1080	10.3 / 1200	10.6 / 1020	10.1 / 1340	10.5 / 1160	10.6 / 1060
	-	-	12.8 / 820	-	12.7 / 940	12.8 / 860
	-	-	15.0 / 680	-	-	15.0 / 720
Outreach / lifting capacity, with jib (m / kg)	-	-	-	-	15.7 / 290	-
	-	-	-	-	17.4 / 250	-
	-	-	-	-	19.3 / 220	-
Slewing angle	415°	415°	415°	415°	415°	415°
Height in folded position (mm)	2233	2233	2301	2256	2256	2301
Width in folded position (mm)	2500	2500	2500	2500	2500	2500
Installation space needed (mm)	860	860	854	927	927	927
Weight - "standard" crane without stabilizers (kg)	1660	1660	2130	1960	2080	2190
Weight - stabilizer equipment (kg)	195 - 371	195 - 371	195 - 371	195 - 371	195 - 371	195 - 371
Weight - jib (kg)	-	-	-	-	380	-

Hiab XS 144 E-5 HiPro



Hiab XS 144 E-4 HiPro jib 45X-2



Disclaimer. Hiab cranes have been built to meet the highest standards of safety and service life and have been thoroughly tested. Strength calculations for this model have been carried out in accordance with EN13001 in fatigue class S2. Cargotec's certified Quality Assurance System complies with ISO 9001. Some of the items in our literature may be extra equipment. Certain applications may require an official permit. We reserve the right to change technical specifications without prior notice. Hiab cranes produced for EU-countries are CE-marked and comply with the European Standard EN 12999.

Cargotec improves the efficiency of cargo flows by offering solutions for the loading and unloading of goods on land and at sea – wherever cargo is on the move. Cargotec's main daughter brands for cargo handling Hiab, Kalmar and MacGregor are global market leaders in their fields. www.cargotec.com

