

# Hiab XS 244

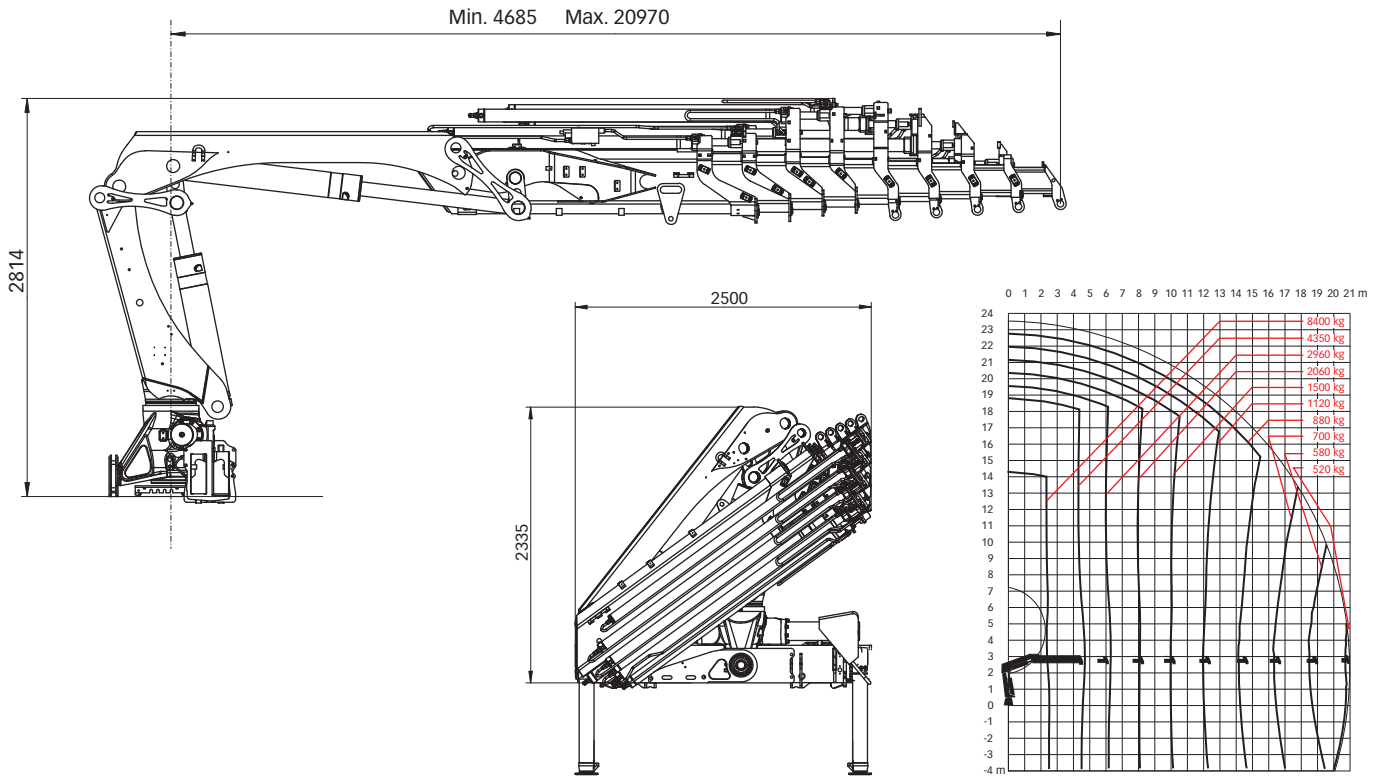
## Range 20-24 tm



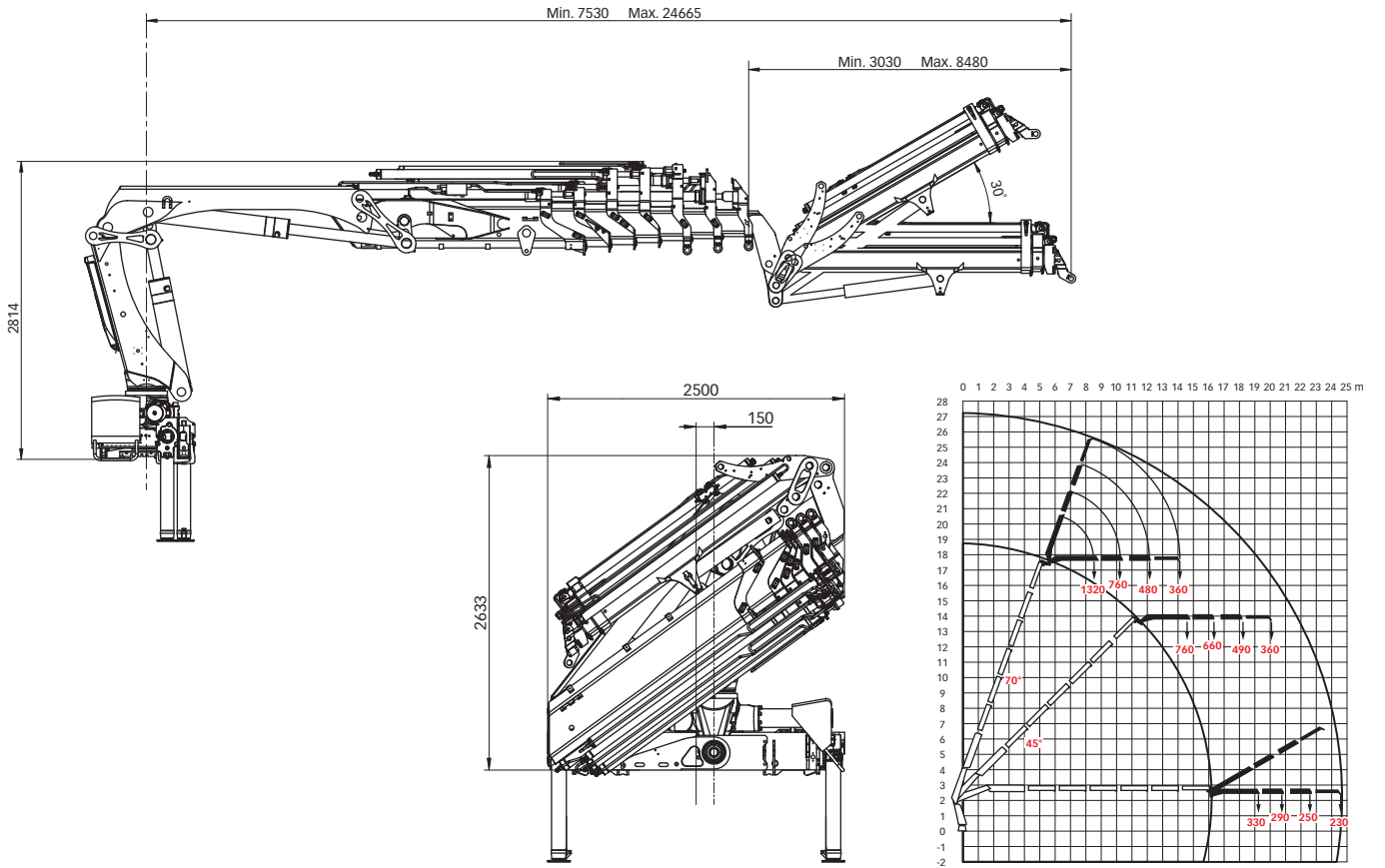
# Hiab XS 244 Basic data

<b>Technical data</b>	<b>EP-5 HiDuo</b>	<b>E-6 HiDuo</b>	<b>EP-4 HiPro</b>	<b>E-6 HiPro</b>	<b>E-8 HiPro</b>
Max. lifting capacity (kNm)	211	186	208	195	185
Outreach - hydraulic extensions (m)	15.1	16.2	12.7	16.2	21.0
Outreach - manual extensions (m)	17.3	20.6	17.3	20.6	22.6
Outreach - jib (m)	-	-	-	24.7	-
Outreach / lifting capacity (m / kg)	2.5 / 8400	2.4 / 8400	2.5 / 8800	2.5 / 8400	2.4 / 8400
	4.5 / 4800	4.5 / 4600	4.4 / 5200	4.5 / 4750	4.7 / 4350
	6.2 / 3300	6.1 / 3150	6.1 / 3600	6.1 / 3300	6.3 / 2960
	8.2 / 2380	7.9 / 2280	8.1 / 2620	7.9 / 2360	8.1 / 2060
	10.4 / 1800	9.8 / 1720	10.3 / 2020	9.8 / 1800	10.0 / 1500
	12.7 / 1440	11.8 / 1340	12.6 / 1640	11.8 / 1400	12.0 / 1120
	15.0 / 1200	13.9 / 1100	-	13.9 / 1160	14.1 / 880
	-	16.1 / 920	-	16.1 / 980	16.3 / 700
	-	-	-	-	18.6 / 580
	-	-	-	-	20.9 / 520
Outreach / lifting capacity, with Jib (m / kg)	-	-	-	19.2 / 330	-
	-	-	-	20.8 / 290	-
	-	-	-	22.7 / 250	-
	-	-	-	24.6 / 230	-
Slewing angle	410°	410°	410°	410°	410°
Height in folded position (mm)	2335	2335	2335	2335	2335
Width in folded position (mm)	2500	2500	2495	2500	2500
Installation space needed (mm)	1166	1256	1242	1256	1199
Weight - "standard" crane without stabilizers (kg)	2940	3150	2860	3210	3540
Weight - stabilizer equipment (kg)	389 - 464	381 - 474	381 - 474	381 - 474	381 - 474
Weight - jib (kg)	-	-	-	450	-

### Hiab XS 244 E-8 HiPro



### Hiab XS 244 E-6 HiPro jib 45X-3



**Disclaimer.** Hiab cranes have been built to meet the highest standards of safety and service life and have been thoroughly tested. Strength calculations for this model have been carried out in accordance with EN13001 in fatigue class S2. Cargotec's certified Quality Assurance System complies with ISO 9001. Some of the items in our literature may be extra equipment. Certain applications may require an official permit. We reserve the right to change technical specifications without prior notice. Hiab cranes produced for EU-countries are CE-marked and comply with the European Standard EN 12999.

**Cargotec** improves the efficiency of cargo flows by offering solutions for the loading and unloading of goods on land and at sea – wherever cargo is on the move. Cargotec's main daughter brands for cargo handling Hiab, Kalmar and MacGregor are global market leaders in their fields. [www.cargotec.com](http://www.cargotec.com)

