



ENGINE

Model	: Mitsubishi 6D34-TLU2D
Type	: Water-cooled, 4 cycle, 6 cylinders, line type direct injection, turbocharger, intercooler, diesel engine.
Power	: 153 HP/ 114 Kw/ 2000 rpm SAE 1995
Max. Torque	: 590 Nm/1500 rpm
Displacement	: 5.86 litres
Bore and Stroke	: 104 mm x 115 mm

UNDERCARRIGE

X Type Lower Frame Construction Pentagon Box Type Chassis.

Shoe	: Triple grouser
No. Of Shoes	: 2 x 49
No. Of Lower Rollers	: 2 x 9
No. Of Upper Rollers	: 2 x 2
Track Tensioning	: Hydraulic Spring Tensioning.

CAB

- High capacity air conditioner.
- Reduced vibration and noise transfer with 6 silicon oil&rubber cab mountings.
- Ergonomically designed operator's multi-adjustable seat.

SWING SYSTEM

Engine	: Axial piston type integrated with shock absorber valves.
Reduction	: 2 stage planetary gear box.
Swing Brakes	: Hydraulic multi disc type.
Swing Speed	: 10.7 rpm.

TRAVEL AND BRAKES

Travel	: Fully hydrostatic.
Travel Motors	: Axial piston type.
Reduction	: 3 stage planetary gear.

Travel Speed

High Speed	: 5.1 km/h
Low Speed	: 3.5 km/h
Max. Drawbar Pull	: 18.500 kg.
Gradeability	: 35° (%70)
Parking Brake	: Hydraulic multi disc type.

HYDRAULIC SYSTEM

Main Pump

Type	: Double variable displacement axial piston pumps.
Max. Flow	: 2 x 224 lt/min
Pilot Pump	: Gear, 19 lt/min

Relief Valves

Attachment (Boom, Arm, Bucket)	: 330 kgf/cm ²
Power Boost	: 360 kgf/cm ²
Travel	: 360 kgf/cm ²
Swing	: 240 kgf/cm ²
Pilot	: 40 kgf/cm ²

Hydraulic Engines

Travel : 2 speed axial piston type motors with braking valves.
Swing : Axial piston type motor.

Cylinders

Main Boom	: 2 x 125 x 85 x 1.325 mm
Stick Cylinder	: 1 x 140 x 100 x 1.640 mm
Bucket Cylinder	: 1 x 125 x 85 x 1.060 mm

[AECS] Advanced Electronic Control System

Computer Aided Advanced Electronic Control System with multi-language computer menu, designed to maintain maximum performance and efficiency at various and hard operating conditions. Saves fuel by regulating engine and pump according to the operating conditions.

CAPACITY

Fuel Tank	: 354 lt	Engine Oil	: 18 lt
Hydraulic Tank	: 460 lt	Swing Reduction	: 5 lt
Hydraulic System	: 290 lt	Travel Reduction	: 2 x 5.4 lt
Radiator	: 22 lt		

ELECTRICAL SYSTEM

Voltage	: 24 V
Battery	: 2 x 12 V x 120 AH
Alternator	: 24 V / 50 A
Starting Motor	: 5 KW

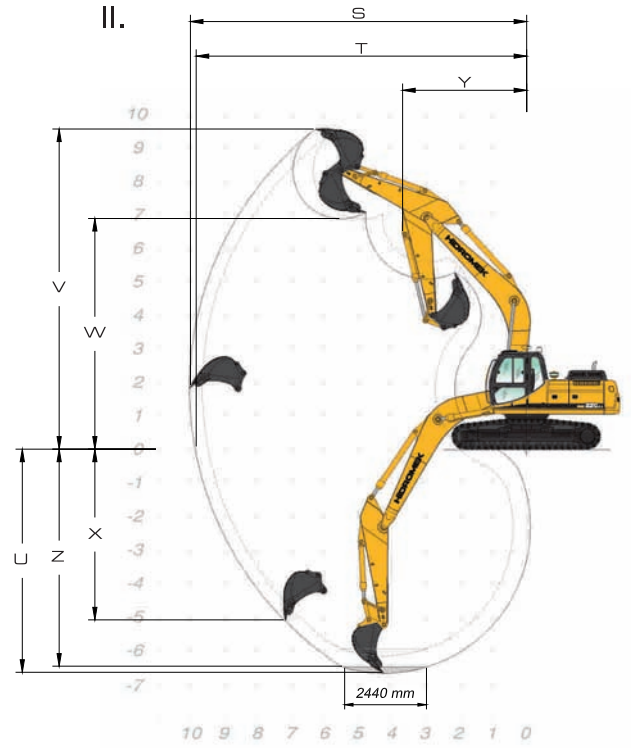
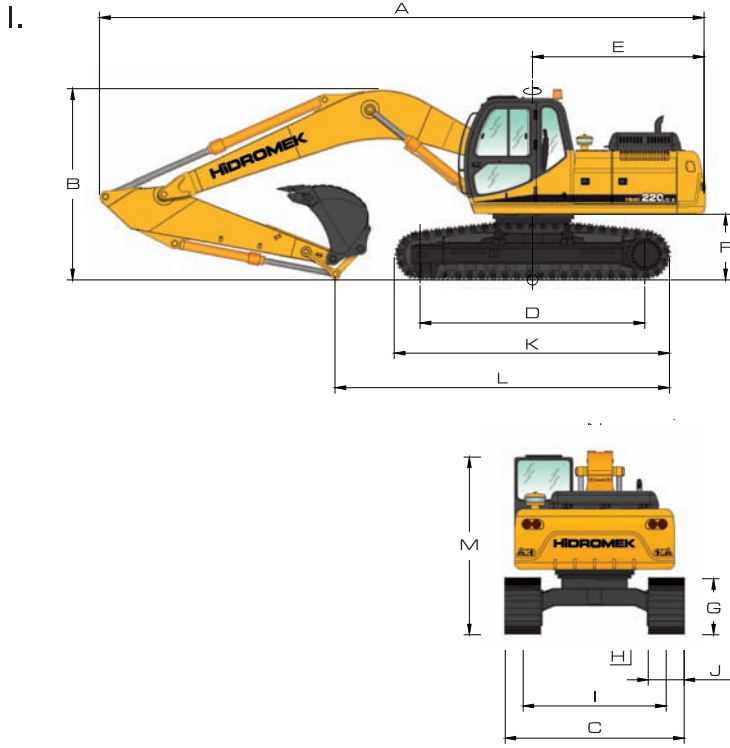
LUBRICATION

Centralized lubrication system is provided for lubricating all difficult-to-reach parts on the components, such as boom and arm.

OPERATING WEIGHT

22.300 kg

HMK 220LC-2



I. GENERAL DIMENSIONS

A . Overall Length	9,790 mm
B . Overall Height (Of Top Of Bottom)	3,090 mm
C . Overall Width (Of Lower Structure)	2,990 mm
D . Idler Distance	3,640 mm
E . Turning Radius	2,800 mm
F . Upperstructure Ground Clearance	1,060 mm
G . Crawler Height	935 mm
H . Minimum Ground Clearance	465 mm
I . Track Gauge	2,390 mm
J . Shoe Width	600 mm
K . Overall Length Of Crawler	4,460 mm
L . Length Over Ground	5,420 mm
M . Overall Height (To Top Of Cab)	2,970 mm
N . Upperstructure Width	2,660 mm

II. WORKING DIMENSIONS

S . Maximum Digging Reach	10,060 mm
T . Maximum Digging Reach At Ground Level	9,880 mm
U . Maximum Digging Depth	6,670 mm
V . Maximum Digging Height	9,570 mm
W . Maximum Dumping Clearance	6,900 mm
X . Maximum Vertical Digging Depth	5,100 mm
Y . Minimum Swing Radius	3,710 mm
Z . Digging Depth For 2440 mm Flat Bottom	6,490 mm

GENEL ÖZELLİKLER

Standard Bucket Capacity	1.0 m ³ (SAE)
Bucket Digging Force (Power Boost)	15,310 (16,700) kgf
Arm Crowding Force (Power Boost)	11,440 (12,480) kgf

BOOM : 5.8 m. ARM : 2.92 m. HEAPED BUCKET CAPACITY 1.0 m³



HIDROMEK®

FACTORY - HEAD OFFICE

Sincan Organize Sanayi Bölgesi Osmanlı Caddesi No:1 Sincan
06935 / ANKARA / TURKEY
Phone: (+90) 312 267 12 60 • Fax: (+90) 312 267 21 12
www.hidromek.com • e-mail: export@hidromek.com.tr

Notice:

Hidromek reserves the right to modify the specifications and design of the model indicated on this brochure without prior notice.