



FORKLIFT Excellent MODEL

20L / 25L / 30L -7

HYUNDAI LPG FORKLIFT TRUCKS

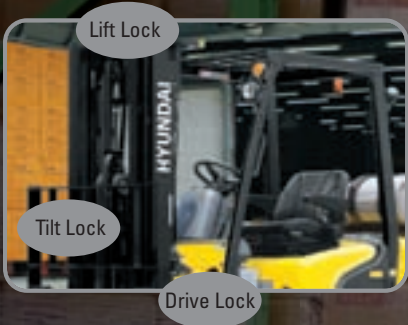
We build a better future



■ Photo may include optional equipment.



FORKLIFT *Excellent Model*



OPSS (Operator Presence Sensing System)

Control of mast tilting, lifting and lowering is not possible through operation of the appropriate control when the operator is not in the normal position. (option)



20L / 25L / 30L -7

20L / 25L / 30L -7

New criterion of Forklift Trucks

Hyundai introduces with its 7-series
a new line of LPG forklift trucks.
Excellent power and performance
improves your business profitability.



■ Photo may include optional equipment.

High Power & Performance

Powerful Engine

HMC BETA Engine

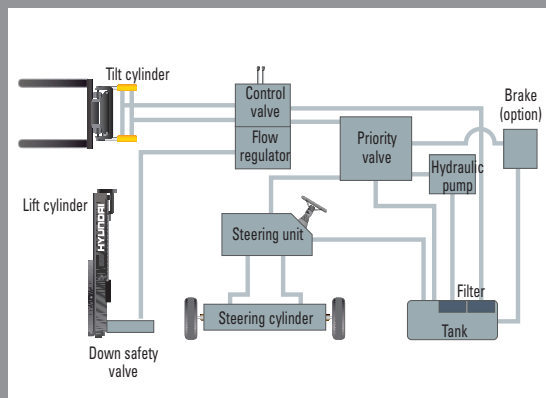
The HMC BETA engine ensures an incomparable performance and durability; with its market approved quality, this engine gives an additional value to the machine. With its power of 37 kW it will fit for any work, even with special attachments that require extensive power. (EPA/EU Tier-2 Certified)

37 kW / 2,450 rpm



State-of-the-art hydraulic system

The latest designed, large-capacity hydraulic system including a low-noise control valve shortens reaction time during operation and improves both efficiency and durability.



Fast and stable performance

Being able to quickly raise and lower the mast, as well as tilting forward and backward, the truck provides you the best operational conditions during loading/unloading operations. With a loaded truck, mast lowering speed is carefully controlled by a control down valve to ensure full safety on the job.

20L/25L/30L-7

Ability Champion, The new master on your job-site!

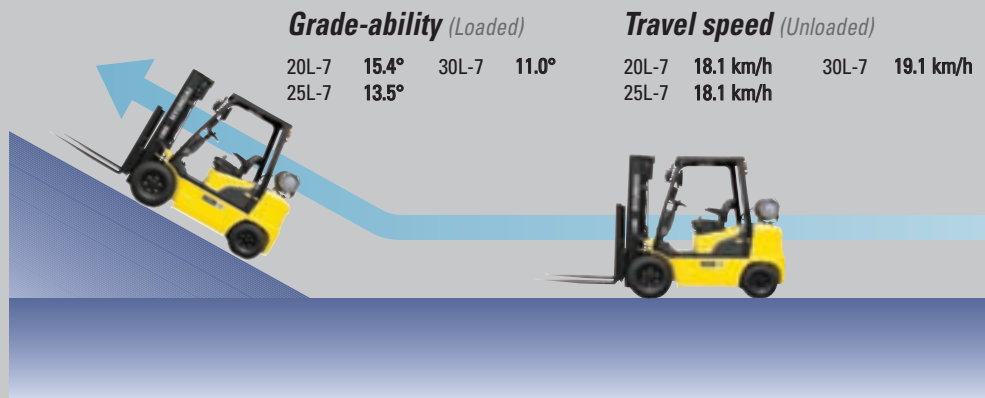
Smooth running, efficient and ergonomically designed, 20L/25L/30L-7 series are made to meet your needs.



■ Photo may include optional equipment.

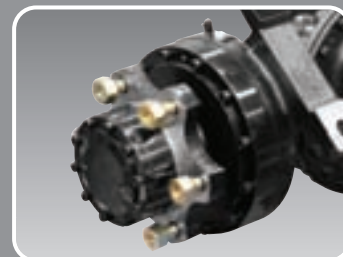
Faster Travel Speed & Grade-ability

The powerful high-output engine provides greater acceleration, better grade-ability and faster travel speed on any tough terrain or slope.



Increased mast tilting angle

A mast tilting angle of 6 degrees forward and 10 degrees backward gives the operator a safe and rapid platform for loading and unloading jobs.



Wet disc brake system

The adoption of wet disc type brakes improves the brake performance and makes your service intervals 5 times longer compared to conventional one's. A 45 % higher brake pedal effort on a 20 % slope increases your safety during operation.



Fully hydrostatic power steering

A hydraulic steering system always guarantees smooth and flexible steering, preventing overrun and steering wheel kick-back.

Comfortable Operation



Adjustable steering wheel

The steering wheel with horn button can be adjusted by a lever on the left-hand side to improve operators' comfortability.



Easy and safe shift lever

A single lever on the left side of the steering column gives the operator fast and easy control of travel direction. The engine can only be started in case of neutral position of this lever.



Multi-function switch lever

A multi-functional switch lever gives easy access to lights and horn.



Quick Response of Operating Control Levers

Only minimal operator's effort is required for precise, safe and productive control.



■ Photo may include optional equipment.



Ergonomic positioned pedals

Based on human engineering, the accelerator, brake and inching pedals are optimally positioned for operator's convenience. Easy to remove cleanable rubber floor mat.



Cup holder & console box

Additional storage spaces are located inside the operating space.

20L/25L/30L -7

Ergonomic based space design !

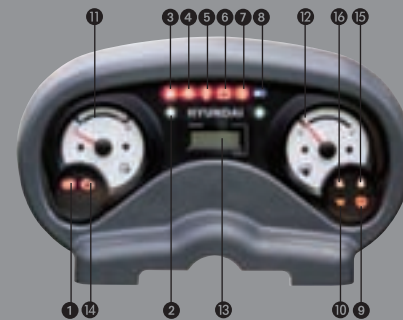
A design based on human engineering relieves fatigue and increases operator's efficiency.



High visibility for safe operation

The operator is able to work with increased safety and accuracy due to a wider view mast.

Operator friendly gauges and water-resistant monitor panel



- | | |
|---|----------------------------|
| 1 Parking brake lamp | 9 Water separator lamp |
| 2 Directional indicators | 10 Pre-heater indicator |
| 3 Fuel warning lamp | 11 Water temperature gauge |
| 4 Engine oil warning lamp | 12 Fuel gauge |
| 5 Transmission oil temperature warning lamp | 13 Hour meter |
| 6 Battery charging warning lamp | 14 Engine check lamp |
| 7 Air cleaner filter warning light | 15 Seat belt warning |
| 8 Working light indicator | 16 OPSS warning |

Easily adjustable suspension seat

An attractive and adjustable seat with armrests, based on a human engineering design, provides great comfort, safety and durability.



New anti-vibration and shock absorbing system

An anti-vibration rubber type insulator is installed between the cabin structure and truck frame to reduce vibrations and lower noise while driving. This reduces operator's fatigue and increases safety during truck operation.



Endurance & Safety

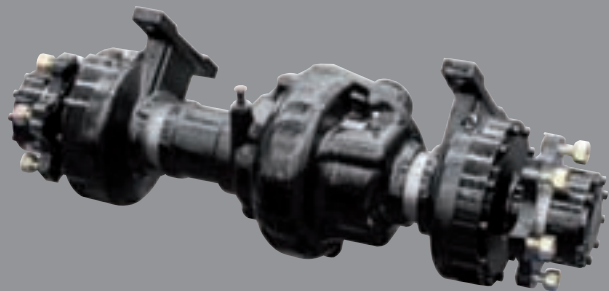
Strong overhead guard

The safety overhead guard meets EEC and ANSI regulations and protects the operator during hazardous jobs.



Parking Brake

Toggle type parking brake requires less efforts from the operator to set.



Highly Durable Electric Power-Shift Transmission

The power-shift transmission provides you with fast but quiet travel speed under all heavy load conditions. So boosting your work efficiency.



Safety through high durability!

Safety and durability were priorities in the design of the equipment.



Large footstep & Handle

Wide "open" step ensures easy and safe access to the operator's seat

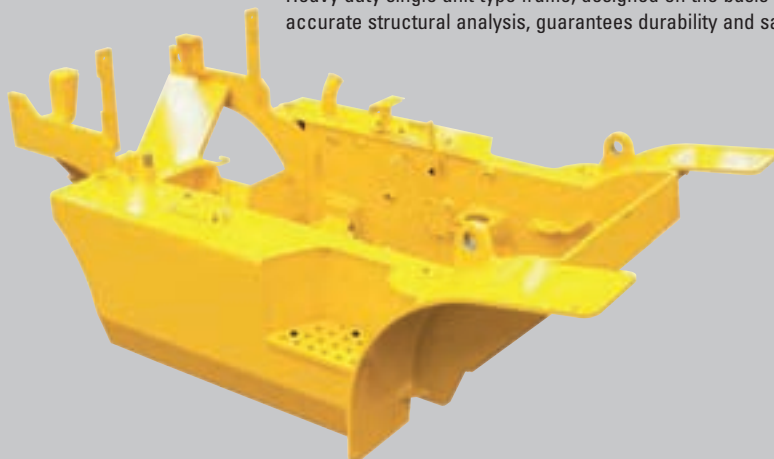
20L / 25L / 30L -7



■ Photo may include optional equipment.

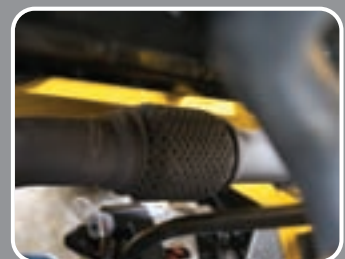
Heavy duty single unit frame

Heavy duty single unit type frame, designed on the basis of accurate structural analysis, guarantees durability and safety.



Improved maintenance of electric parts

Various electric parts are centralized below the dash board resulting in improvement in maintenance.



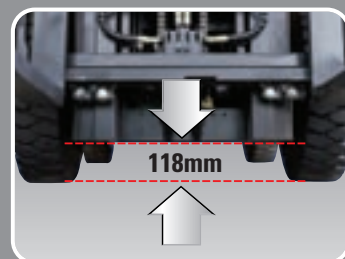
Expansion bellows

The expansion bellows absorbs vibration and reduces noise generated from the exhaust gas system and extends the life cycle.



Bright, protected headlights

Bright, protected headlights are positioned for increased visibility in dark environments.



Ground clearance

The engine and transmission are assembled horizontally and positioned high in the frame to protect valuable components during operations on rugged surface.

High Durability & Easy Maintenance



Electrically Monitored Air Filter

An air cleaner sensor alerts the operator of a restricted air filter so allowing replacement before a potential engine damage occurs.



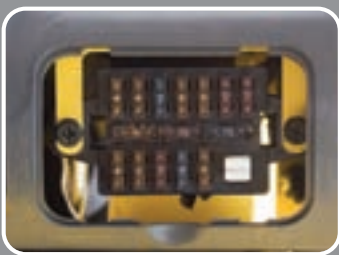
Easy Maintenance oil check

The T/M oil level can be checked easily without any disassembly.



Brake fluid reservoir

Highly visible and accessible reservoir makes daily inspections a quick and easy job.



An accessible, compact fuse box for easy inspection



Centralized design for easy service!

An ideal arrangement of components ensures easy access and convenience during maintenance.

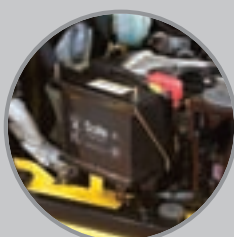


Easy Change of Air Cleaner

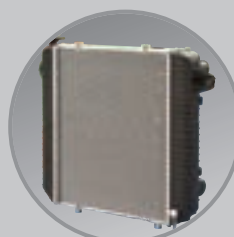
The air filter is readily accessible for cleaning or replacement.



Portable Slide Cover



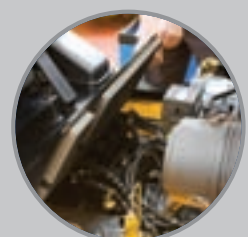
Rotational battery installation



Aluminum radiator with superb protection against heat



Engine oil condition check



Easy to remove (tool-less) floor plate

20L/25L/30L-7

Mast Specifications 20L-7

Mast Type		Maximum Fork Height	Overall Height (Lowered)	Tilt Angle		Load Capacity without side shift at 500 mm (24 in) LC		Load Capacity with side shift at 500 mm (24 in) LC		Truck Weight Unload		Free Lift	
				degree		Single Tire	Double Tire	Single Tire	Double Tire	Single Tire	Double Tire	Without Backrest	With Backrest
				mm (in)	mm (in)	Forward	Backward	kg (lb)	kg (lb)	kg (lb)	kg (lb)	kg (lb)	kg (lb)
2/ Stage limited free lift	V300	3,000 (118.1)	2,025 (79.7)	6	10	2,000 (4,000)	2,000 (4,000)	2,000 (4,000)	2,000 (4,000)	3,457 (7,620)	3,593 (7,921)	155 (6.1)	155 (6.1)
	* V330	3,300 (129.9)	2,175 (85.6)	6	10	2,000 (4,000)	2,000 (4,000)	2,000 (4,000)	2,000 (4,000)	3,476 (7,664)	3,612 (7,964)	155 (6.1)	155 (6.1)
	V350	3,500 (137.8)	2,275 (89.6)	6	10	2,000 (4,000)	2,000 (4,000)	2,000 (4,000)	2,000 (4,000)	3,493 (7,701)	3,629 (8,001)	155 (6.1)	155 (6.1)
	V370	3,700 (145.7)	2,425 (95.5)	6	10	2,000 (4,000)	2,000 (4,000)	2,000 (4,000)	2,000 (4,000)	3,515 (7,750)	3,651 (8,050)	155 (6.1)	155 (6.1)
	V400	4,000 (157.4)	2,575 (101.4)	6	10	2,000 (4,000)	2,000 (4,000)	2,000 (4,000)	2,000 (4,000)	3,545 (7,816)	3,681 (8,116)	155 (6.1)	155 (6.1)
	V430	4,300 (169.3)	2,725 (107.3)	6	6	2,000 (4,000)	2,000 (4,000)	1,950 (3,820)	2,000 (4,000)	3,597 (7,930)	3,733 (8,230)	155 (6.1)	155 (6.1)
	V450	4,500 (177.2)	2,875 (113.2)	6	6	2,000 (4,000)	2,000 (4,000)	1,930 (3,820)	2,000 (4,000)	3,619 (7,978)	3,755 (8,279)	155 (6.1)	155 (6.1)
	V470	4,700 (185.0)	2,975 (117.1)	6	6	1,975 (3,900)	2,000 (4,000)	1,900 (3,720)	2,000 (3,900)	3,633 (8,010)	3,770 (8,310)	155 (6.1)	155 (6.1)
V500	5,000 (196.9)	3,125 (123.0)	6	6	1,925 (3,790)	1,975 (3,900)	1,850 (3,610)	1,950 (3,750)	3,655 (8,059)	3,792 (8,359)	155 (6.1)	155 (6.1)	
2/ Stage full free lift	VF290	2,932 (115.4)	2,025 (79.7)	6	6	2,000 (4,000)	2,000 (4,000)	2,000 (4,000)	2,000 (4,000)	3,502 (7,722)	3,639 (8,024)	1,377 (54.2)	845 (33.3)
	VF320	3,232 (127.2)	2,175 (85.6)	6	6	2,000 (4,000)	2,000 (4,000)	2,000 (4,000)	2,000 (4,000)	3,536 (7,795)	3,673 (8,097)	1,527 (60.1)	995 (39.2)
3/ Stage full free lift	TF370	3,700 (145.7)	1,825 (71.9)	6	6	2,000 (4,000)	2,000 (4,000)	2,000 (4,000)	2,000 (4,000)	3,593 (7,921)	3,730 (8,223)	1,177 (46.3)	645 (25.4)
	TF400	4,000 (157.4)	1,925 (75.8)	6	6	2,000 (4,000)	2,000 (4,000)	1,950 (4,000)	2,000 (4,000)	3,617 (7,974)	3,754 (8,276)	1,277 (50.3)	745 (29.3)
	TF430	4,300 (169.3)	2,025 (79.7)	6	6	1,975 (4,000)	2,000 (4,000)	1,900 (3,820)	2,000 (4,000)	3,635 (8,014)	3,772 (8,316)	1,377 (54.2)	845 (33.3)
	TF450	4,500 (177.2)	2,125 (83.7)	6	6	1,950 (3,900)	2,000 (4,000)	1,875 (3,720)	1,950 (4,000)	3,657 (8,062)	3,794 (8,364)	1,477 (58.1)	945 (37.2)
	TF470	4,700 (185.0)	2,175 (85.6)	6	6	1,925 (3,790)	1,975 (3,900)	1,850 (3,610)	1,925 (3,720)	3,670 (8,092)	3,807 (8,394)	1,527 (60.1)	995 (39.2)
	TF500	5,000 (196.9)	2,275 (89.6)	6	6	1,875 (3,540)	1,925 (3,790)	1,800 (3,360)	1,900 (3,610)	3,693 (8,141)	3,830 (8,443)	1,627 (64.1)	1,095 (43.1)
	TF550	5,500 (216.5)	2,475 (97.4)	6	6	1,800 (2,800)	1,850 (3,680)	1,725 (2,620)	1,825 (3,500)	3,732 (8,227)	3,869 (8,529)	1,827 (71.9)	1,295 (51.0)
	TF600	6,000 (236.2)	2,675 (105.3)	6	6	1,350 (1,870)	1,775 (3,300)	1,400 (1,690)	1,775 (3,120)	3,797 (8,370)	3,934 (8,672)	2,027 (79.8)	1,495 (58.9)
	TF650	6,500 (255.9)	2,875 (113.2)	3	3	1,200 (1,340)	1,700 (2,640)	1,350 (1,160)	1,700 (2,460)	3,843 (8,472)	3,980 (8,774)	2,227 (87.7)	1,695 (66.7)
	TF700	7,000 (275.6)	3,075 (121.1)	3	3	1,000 (940)	1,625 (1,980)	1,100 (760)	1,600 (1,800)	3,881 (8,557)	4,018 (8,859)	2,427 (95.6)	1,895 (74.6)

* Standard

Mast Specifications 25L-7

Mast Type		Maximum Fork Height	Overall Height (Lowered)	Tilt Angle		Load Capacity without side shift at 500 mm (24 in) LC		Load Capacity with side shift at 500 mm (24 in) LC		Truck Weight Unload		Free Lift	
				degree		Single Tire	Double Tire	Single Tire	Double Tire	Single Tire	Double Tire	Without Backrest	With Backrest
				mm (in)	mm (in)	Forward	Backward	kg (lb)	kg (lb)	kg (lb)	kg (lb)	kg (lb)	kg (lb)
2/ Stage limited free lift	V300	3,000 (118.1)	2,025 (79.7)	6	10	2,500 (5,000)	2,500 (5,000)	2,500 (5,000)	2,500 (5,000)	3,747 (8,260)	3,883 (8,560)	155 (6.1)	155 (6.1)
	* V330	3,300 (129.9)	2,175 (85.6)	6	10	2,500 (5,000)	2,500 (5,000)	2,500 (5,000)	2,500 (5,000)	3,766 (8,303)	3,902 (8,603)	155 (6.1)	155 (6.1)
	V350	3,500 (137.8)	2,275 (89.6)	6	10	2,500 (5,000)	2,500 (5,000)	2,500 (5,000)	2,500 (5,000)	3,783 (8,340)	3,919 (8,641)	155 (6.1)	155 (6.1)
	V370	3,700 (145.7)	2,425 (95.5)	6	10	2,500 (5,000)	2,500 (5,000)	2,500 (4,820)	2,500 (5,000)	3,805 (8,389)	3,941 (8,689)	155 (6.1)	155 (6.1)
	V400	4,000 (157.4)	2,575 (101.4)	6	10	2,450 (4,930)	2,500 (5,000)	2,475 (4,750)	2,500 (4,820)	3,835 (8,455)	3,971 (8,755)	155 (6.1)	155 (6.1)
	V430	4,300 (169.3)	2,725 (107.3)	6	6	2,400 (4,850)	2,475 (5,000)	2,400 (4,670)	2,450 (4,820)	3,887 (8,569)	4,023 (8,869)	155 (6.1)	155 (6.1)
	V450	4,500 (177.2)	2,875 (113.2)	6	6	2,350 (4,740)	2,425 (4,938)	2,350 (4,560)	2,400 (4,758)	3,909 (8,618)	4,045 (8,918)	155 (6.1)	155 (6.1)
	V470	4,700 (185.0)	2,975 (117.1)	6	6	2,325 (4,630)	2,400 (4,850)	2,325 (4,450)	2,375 (4,670)	3,923 (8,649)	4,060 (8,950)	155 (6.1)	155 (6.1)
V500	5,000 (196.9)	3,125 (123.0)	6	6	2,250 (4,400)	2,350 (4,630)	2,275 (4,220)	2,350 (4,450)	3,945 (8,698)	4,082 (8,998)	155 (6.1)	155 (6.1)	
2/ Stage full free lift	VF290	2,932 (115.4)	2,025 (79.7)	6	6	2,500 (5,000)	2,500 (5,000)	2,500 (5,000)	2,500 (5,000)	3,792 (8,361)	3,929 (8,663)	1,377 (54.2)	845 (33.3)
	VF320	3,232 (127.2)	2,175 (85.6)	6	6	2,500 (5,000)	2,500 (5,000)	2,500 (5,000)	2,500 (5,000)	3,826 (8,435)	3,963 (8,737)	1,527 (60.1)	995 (39.2)
3/ Stage full free lift	TF370	3,700 (145.7)	1,825 (71.9)	6	6	2,460 (4,930)	2,500 (5,000)	2,450 (4,750)	2,500 (4,820)	3,883 (3,560)	4,020 (8,862)	1,177 (46.3)	645 (25.4)
	TF400	4,000 (157.4)	1,925 (75.8)	6	6	2,400 (4,820)	2,475 (4,930)	2,400 (4,640)	2,450 (4,750)	3,907 (8,613)	4,044 (8,915)	1,277 (50.3)	745 (29.3)
	TF430	4,300 (169.3)	2,025 (79.7)	6	6	2,350 (4,710)	2,425 (4,850)	2,350 (4,530)	2,400 (4,670)	3,925 (8,653)	4,062 (8,955)	1,377 (54.2)	845 (33.3)
	TF450	4,500 (177.2)	2,125 (83.7)	6	6	2,300 (4,540)	2,375 (4,760)	2,325 (4,360)	2,350 (4,580)	3,947 (8,701)	4,084 (9,004)	1,477 (58.1)	945 (37.2)
	TF470	4,700 (185.0)	2,175 (85.6)	6	6	2,250 (4,400)	2,350 (4,670)	2,275 (4,220)	2,300 (4,490)	3,960 (8,731)	4,097 (9,033)	1,527 (60.1)	995 (39.2)
	TF500	5,000 (196.9)	2,275 (89.6)	6	6	2,200 (3,520)	2,275 (4,580)	2,200 (3,340)	2,275 (4,400)	3,983 (8,780)	4,120 (9,082)	1,627 (64.1)	1,095 (43.1)
	TF550	5,500 (216.5)	2,475 (97.4)	6	6	1,600 (2,640)	2,200 (4,400)	1,700 (2,460)	2,200 (4,220)	4,022 (8,866)	4,159 (9,168)	1,827 (71.9)	1,295 (51.0)
	TF600	6,000 (236.2)	2,675 (105.3)	6	6	1,050 (1,760)	2,100 (3,520)	1,150 (1,580)	2,100 (3,340)	4,087 (9,009)	4,224 (9,311)	2,027 (79.8)	1,495 (58.9)
	TF650	6,500 (255.9)	2,875 (113.2)	3	3	1,000 (1,430)	2,025 (2,750)	1,000 (1,250)	2,000 (2,570)	4,133 (9,112)	4,270 (9,414)	2,227 (87.7)	1,695 (66.7)
	TF700	7,000 (275.6)	3,075 (121.1)	3	3	900 (990)	1,950 (2,090)	900 (810)	1,950 (1,910)	4,171 (9,196)	4,308 (9,498)	2,427 (95.6)	1,895 (74.6)

* Standard

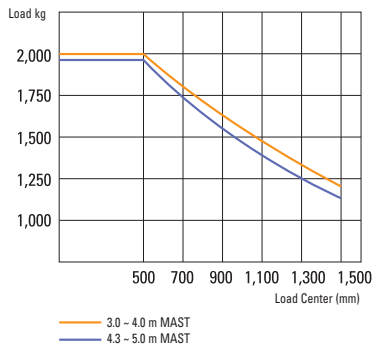
Mast Specifications 30L-7

Mast Type		Maximum Fork Height	Overall Height (Lowered)	Tilt Angle		Load Capacity without side shift at 500 mm (24 in) LC		Load Capacity with side shift at 500 mm (24 in) LC		Truck Weight Unload		Free Lift	
				degree		Single Tire	Double Tire	Single Tire	Double Tire	Single Tire	Double Tire	Without Backrest	With Backrest
				mm (in)	mm (in)	Forward	Backward	kg (lb)	kg (lb)	kg (lb)	kg (lb)	kg (lb)	kg (lb)
2/ Stage limited free lift	V300	3,000 (118.1)	2,040 (80.3)	6	10	3,000 (6,000)	3,000 (6,000)	3,000 (6,000)	3,000 (6,000)	4,247 (9,364)	4,334 (9,555)	155 (6.1)	155 (6.1)
	* V330	3,300 (129.9)	2,190 (86.2)	6	10	3,000 (6,000)	3,000 (6,000)	3,000 (6,000)	3,000 (6,000)	4,268 (9,408)	4,354 (9,599)	155 (6.1)	155 (6.1)
	V350	3,500 (137.8)	2,290 (90.2)	6	10	3,000 (6,000)	3,000 (6,000)	3,000 (6,000)	3,000 (6,000)	4,285 (9,448)	4,372 (9,638)	155 (6.1)	155 (6.1)
	V370	3,700 (145.7)	2,440 (96.1)	6	10	3,000 (6,000)	3,000 (6,000)	3,000 (6,000)	3,000 (6,000)	4,308 (9,498)	4,395 (9,689)	155 (6.1)	155 (6.1)
	V400	4,000 (157.4)	2,590 (102.0)	6	10	3,000 (6,000)	3,000 (6,000)	2,950 (5,920)	2,975 (6,000)	4,339 (9,566)	4,426 (9,757)	155 (6.1)	155 (6.1)
	V430	4,300 (169.3)	2,740 (107.9)	6	6	2,925 (5,840)	3,000 (6,000)	2,875 (5,660)	2,925 (5,950)	4,392 (9,682)	4,478 (9,873)	155 (6.1)	155 (6.1)
	V450	4,500 (177.2)	2,890 (113.8)	6	6	2,875 (5,730)	2,950 (5,900)	2,825 (5,550)	2,875 (5,720)	4,414 (9,732)	4,501 (9,923)	155 (6.1)	155 (6.1)
	V470	4,700 (185.0)	2,990 (117.7)	6	6	2,825 (5,510)	2,925 (5,790)	2,750 (5,330)	2,825 (5,780)	4,430 (9,765)	4,516 (9,956)	155 (6.1)	155 (6.1)
2/ Stage full free lift	V500	5,000 (196.9)	3,140 (123.6)	6	6	2,775 (4,740)	2,850 (5,680)	2,700 (4,560)	2,775 (5,620)	4,452 (9,816)	4,539 (10,007)	155 (6.1)	155 (6.1)
	VF290	2,932 (115.4)	2,040 (80.3)	6	6	3,000 (6,000)	3,000 (6,000)	3,000 (6,000)	3,000 (6,000)	4,288 (9,453)	4,374 (9,643)	1,314 (51.7)	860 (33.9)
3/ Stage full free lift	VF320	3,232 (127.2)	2,190 (86.2)	6	6	3,000 (6,000)	3,000 (6,000)	3,000 (6,000)	3,000 (6,000)	4,323 (9,530)	4,409 (9,720)	1,464 (57.6)	1,010 (39.8)
	TF370	3,700 (145.7)	1,840 (72.4)	6	6	3,000 (6,000)	3,000 (6,000)	2,900 (5,950)	2,950 (6,060)	4,397 (9,694)	4,483 (9,884)	1,114 (43.9)	660 (26.0)
	TF400	4,000 (157.4)	1,940 (76.4)	6	6	2,925 (5,840)	3,000 (6,000)	2,850 (5,780)	2,900 (5,890)	4,422 (9,748)	4,508 (9,937)	1,214 (47.8)	760 (29.9)
	TF430	4,300 (169.3)	2,040 (80.3)	6	6	2,850 (5,730)	2,925 (5,880)	2,775 (5,670)	2,825 (5,780)	4,444 (9,796)	4,530 (9,986)	1,314 (51.7)	860 (33.9)
	TF450	4,500 (177.2)	2,140 (84.3)	6	6	2,800 (5,660)	2,875 (5,760)	2,725 (5,560)	2,775 (5,670)	4,469 (9,852)	4,555 (10,042)	1,414 (55.7)	960 (37.8)
	TF470	4,700 (185.0)	2,190 (86.2)	6	6	2,775 (5,400)	2,825 (5,660)	2,675 (5,220)	2,725 (5,480)	4,483 (9,884)	4,569 (10,073)	1,464 (57.6)	1,010 (39.8)
	TF500	5,000 (196.9)	2,290 (90.2)	6	6	2,700 (4,630)	2,775 (5,510)	2,600 (4,450)	2,675 (5,330)	4,506 (9,933)	4,592 (10,123)	1,564 (61.6)	1,110 (43.7)
	TF550	5,500 (216.5)	2,490 (98.0)	6	6	2,300 (3,040)	2,675 (5,290)	2,525 (2,860)	2,575 (5,110)	4,550 (10,030)	4,636 (10,220)	1,764 (69.4)	1,310 (51.6)
	TF600	6,000 (236.2)	2,690 (105.9)	6	6	1,300 (2,020)	2,575 (4,630)	1,750 (1,840)	2,475 (4,450)	4,620 (10,184)	4,706 (10,374)	1,964 (77.3)	1,510 (59.4)
	TF650	6,500 (255.9)	2,890 (113.8)	3	3	1,200 (1,720)	2,475 (3,740)	1,700 (1,540)	2,375 (3,560)	4,670 (10,296)	4,756 (10,486)	2,164 (85.2)	1,710 (67.3)
TF700	7,000 (275.6)	3,090 (121.7)	3	3	900 (1,050)	2,400 (2,860)	1,450 (870)	2,275 (2,680)	4,714 (10,393)	4,800 (10,582)	2,364 (93.1)	1,910 (75.2)	

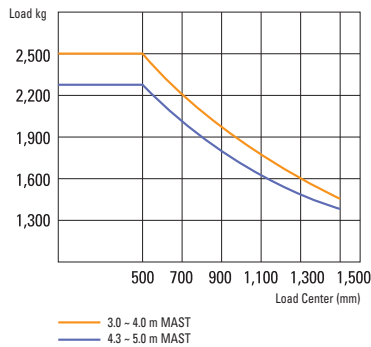
* Standard

Load Capacity

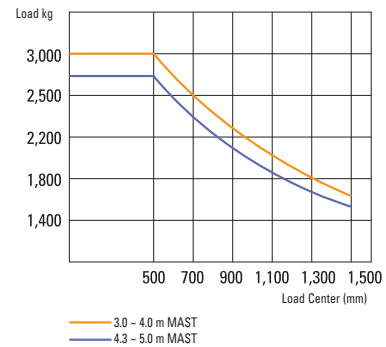
20L-7



25L-7



30L-7



Standard Items

- MASTER SWITCH
- SIDE SHIFT
- WORK LAMP
- ATTACH PIPING
3 Spool-piping

Optional Items

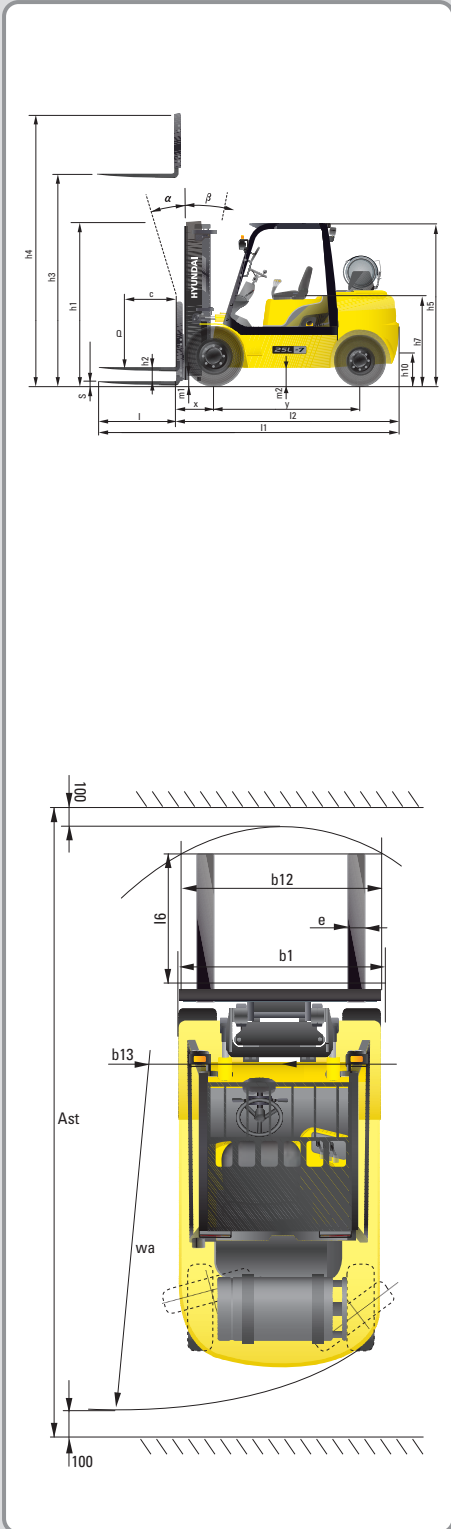
- CABIN & HEATER
- INTEGRAL SIDE SHIFT
- FORK
900 mm; 1000 mm; 1200 mm; 1350 mm;
1500 mm; 1650 mm; 1800 mm
- OVER SHOE
1300 mm; 1500 mm; 1700 mm; 1800 mm
- TILTING
6/6°, 3/3°
- TIRE
Cushion, No-marking, Double
- SEAT
Pocket, Arm Rest, Hip Rest
- LPG CLAMP
Swing Out, Swing Down
- M.C.V
4-Spool
- ATTACH PIPING
4 Spool-piping
- BEACON LAMP
- HAZARD SWITCH
- OPSS
Travel, Travel + Mast
- BRAKE PEDAL
Hydraulic Booster (w/o Accumulator)

20L/25L/30L -7

Notes

Lined area for notes.

Dimension



Specification

Identification			
1.1	Manufacturer	Hyundai	Hyundai
1.2	Type	20L-7	25L-7
1.3	Drive: electric (battery or mains), diesel, petrol, fuel gas, manual	FUEL GAS	FUEL GAS
1.4	Type of operation: hand, pedestrian, standing, seated, order-picker	Seated	Seated
1.5	Load capacity / rated load	2,000 (4,000)	2,500 (5,000)
1.6	Load center distance	500 (24)	500 (24)
1.8	Load distance, center of drive axle to fork	461 (18)	464 (18)
1.9	Wheelbase	1,650 (65)	1,700 (67)
Weights			
2.1	Service weight	3,476 (7,663)	3,766 (8,303)
2.2	Axle loading, loaded front / rear	4,763 / 713	5,095 / 771
2.3	Axle loading, unloaded front / rear	1,599 / 1,877	1,539 / 2,227
Wheels, Chassis			
3.1	Tires: solid rubber, superelastic, pneumatic, polyurethane	Pneumatic	Pneumatic
3.2	Tires size, front (φ x width)	7.00 - 12 - 12PR	7.00 - 12 - 12PR
3.3	Tires size, rear (φ x width)	6.00 - 9 - 10PR	6.00 - 9 - 10PR
3.5	Wheels, number front / rear (x = driven wheels)	2x / 2	2x / 2
3.6	Track width, front	965 (39)	965 (39)
3.7	Track width, rear	980 (39)	980 (39)
Basic Dimensions			
4.1	Mast / fork carriage tilt forward / backward (α/β)	degrees	6 / 10
4.2	Lowered mast height	h1 mm (in)	2,175 (86)
4.3	Free lift	h2 mm (in)	155 (6.1)
4.4	Lift height	h3 mm (in)	3,300 (130)
4.5	Extended mast height	h4 mm (in)	4,485 (177)
4.7	Overhead load guard (cab) height	h5 mm (in)	2,160 (85)
4.8	Seat height / standing height	h7 mm (in)	1,086 (42.8)
4.12	Coupling height	h10 mm (in)	283 (11.1)
4.19	Overall length	l1 mm (in)	3,577 (140.9)
4.20	Length to face of forks	l2 mm (in)	2,527 (99)
4.21	Overall width	b1 mm (in)	1,160 (46)
4.22	Fork dimensions (hook type)	S x E x L mm (in)	1,050 x 100 x 45 (41 x 4 x 1.8)
4.23	Fork carriage ISO 2328, class / type A, B		II / A
4.24	Fork-carriage width	b12 mm (in)	1,060 (41.7)
4.31	Ground clearance, loaded, under mast	m1 mm (in)	114 (4.5)
4.32	Ground clearance, centre of wheelbase	m2 mm (in)	171 (6.7)
4.33	Aisle width for pallets 1000 x 1200 crossways (L x W)	Ast mm (in)	3,913 (154)
4.34	Aisle width for pallets 800 x 1200 lengthways (W x L)	Ast mm (in)	4,133 (162)
4.35	Turning radius	Wa mm (in)	2,252 (89)
4.36	Smallest pivot point distance	b13 mm (in)	722 (30)
Performance Data			
5.1	Travel speed, unloaded	km/h (mph)	18.1 (11.2)
5.2	Lift speed, loaded / unloaded	mm/s	580 / 610
5.3	Lowering speed, loaded / unloaded	mm/s	500 / 450
5.5	Drawbar pull, loaded	kg (lb)	1,867 (4,116)
5.7	Gradient performance, loaded / unloaded	%	35.8 / 24.3
5.9	Acceleration time, loaded / unloaded (10 m)	sec	N/A
5.10	Service brake		Mechanic / Hydraulic
Engine			
6.1	Engine manufacturer / type		HMC BETA
6.2	Engine power acc. to ISO 1585	kW	37
6.3	Rated speed	1/min	2,450
6.4	No. of cylinder / cubic capacity	anz/cm ³	4 / 1,975
6.5	Fuel consumption acc. To VDI cycle	ℓ/h	N/A
Other Details			
8.1	Type of drive control		Power shift
8.2	Operating pressure	bar	225 / 168
8.3	Oil volume	ℓ	30
8.4	Sound level at driver's ear according to DIN 12 053	db (A)	80

1) with DZ mast + 25 mm; with integrated sideshift x = 375 mm (with DZ mast + 25 mm); with hook-on sideshift x = 410.5 mm (with DZ mast + 25 mm)
Vibration level according to 2002/44/EC: 0.38 m/s²

Contact your Hyundai dealer for more information. The machine shown may vary according to International standards.
All US measurement rounded off to nearest pounds or inches. Materials and specifications are subject to change without notice.



Head Office (Sales Office) 1 CHEONHA-DONG, DONG-KU, ULSAN, KOREA
Tel : (82) (52) 202-7970, 7729 Fax : (82) (52) 202-7979, 7720

U.S. Operation Hyundai Construction Equipment U.S.A., Inc.
955 ESTES AVENUE, ELK GROVE VILLAGE IL. 60007
Tel : (1) 847-437-3333 Fax : (1) 847-437-3574

European Operation Hyundai Heavy Industries Europe N.V.
VOSSENDAAL 11, 2440 GEEL, BELGIUM
Tel : (32) 14-562200 Fax : (32) 14-593405 ~ 06

PLEASE CONTACT