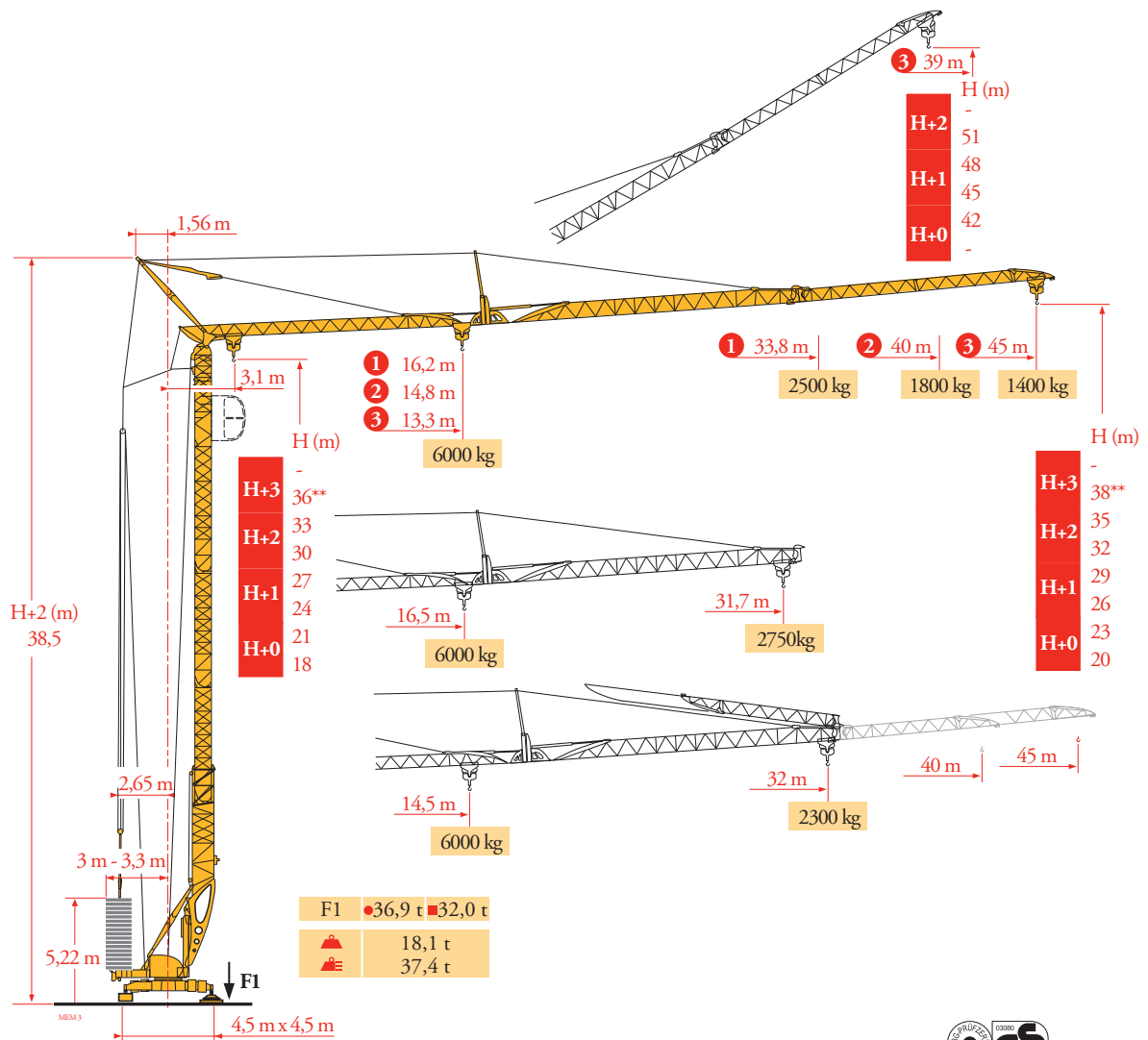


Potain Igo T 85 A



Courbes de charges
Lastkurven
Load diagrams
Curvas de cargas
Curve di carico
Curva de cargas
Диаграммы грузоподъемностей

MEM 3

| | | | | | | | | | | | | | | | | | | | |
|------|-------|------|------|------|------|------|------|------|------|------|------|------|------|------|------|------|------|------|----|
| 45 m | 3,1 ▶ | 12,7 | 14 | 16 | 18 | 20 | 22,4 | 23,7 | 26 | 28 | 30 | 32 | 34 | 36 | 38 | 40 | 42 | 45 | m |
| | | 6000 | 5330 | 4520 | 3915 | 3445 | 3000 | 2800 | 2500 | 2285 | 2100 | 1935 | 1795 | 1670 | 1555 | 1460 | 1370 | 1250 | kg |
| | | | | | | | 3000 | 2800 | 2500 | 2285 | 2100 | 1935 | 1795 | 1670 | 1555 | 1460 | 1370 | 1250 | kg |
| | | | | | | | | 3000 | 2700 | 2450 | 2250 | 2100 | 1950 | 1850 | 1700 | 1600 | 1500 | 1400 | kg |

| | | | | | | | | | | | | | | | | |
|------|-------|------|------|------|------|------|------|------|------|------|------|------|------|------|------|----|
| 40 m | 3,1 ▶ | 13,9 | 16 | 18 | 20 | 22 | 24,6 | 26 | 28 | 30 | 32 | 34 | 36 | 38 | 40 | m |
| | | 6000 | 5045 | 4375 | 3850 | 3430 | 3000 | 2805 | 2565 | 2355 | 2180 | 2020 | 1885 | 1760 | 1650 | kg |
| | | | | | | | 3000 | 2805 | 2565 | 2355 | 2180 | 2020 | 1885 | 1760 | 1650 | kg |
| | | | | | | | | 3000 | 2750 | 2550 | 2350 | 2200 | 2050 | 1900 | 1800 | kg |



| | | | | | | | | | | | | |
|--------|-------|------|------|------|------|------|------|------|------|------|------|----|
| 33,8 m | 3,1 ▶ | 15,4 | 18 | 20 | 22 | 24 | 26 | 27,6 | 29 | 32 | 33,8 | m |
| | | 6000 | 4995 | 4405 | 3930 | 3545 | 3220 | 3000 | 2830 | 2510 | 2350 | kg |
| | | | | | | | | 3000 | 2830 | 2510 | 2350 | kg |
| | | | | | | | | | 3000 | 2650 | 2500 | kg |

Flèche relevée
Ausleger in Steilstellung
Luffing jib
Flecha izada
Braccio impennato
Lança inclinada
Маховая стрела

MEM 4

| | | | | | | | | | | | | | |
|------|-------|------|------|------|------|------|------|------|------|------|------|------|----|
| 32 m | 3,1 ▶ | 13,7 | 15 | 16 | 18 | 20 | 22 | 24,3 | 25,5 | 28 | 30 | 32 | m |
| | | 6000 | 5390 | 4985 | 4320 | 3805 | 3390 | 3000 | 2835 | 2530 | 2325 | 2150 | kg |
| | | | | | | | | 3000 | 2835 | 2530 | 2325 | 2150 | kg |
| | | | | | | | | | 3000 | 2700 | 2500 | 2300 | kg |

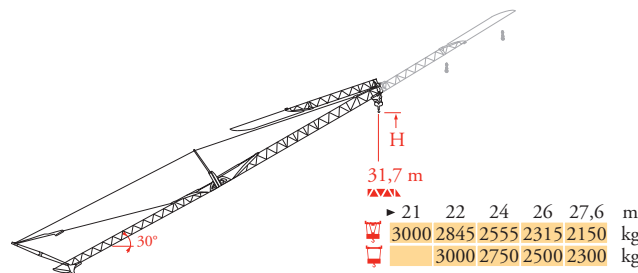
| | | | | | | | | | | | | | | |
|------|--------|------|------|------|------|------|------|------|------|------|------|------|------|----|
| 45 m | ▶ 19,5 | 21,2 | 22 | 24 | 26 | 28 | 30 | 32 | 34 | 36 | 38 | 39 | m | |
| | | 3000 | 2715 | 2595 | 2325 | 2105 | 1920 | 1760 | 1620 | 1500 | 1390 | 1295 | 1250 | kg |
| | | | 3000 | 2850 | 2600 | 2350 | 2150 | 1950 | 1800 | 1650 | 1550 | 1450 | 1400 | kg |

| | | | | | | | | | | |
|------|--------|------|------|------|------|------|------|------|------|----|
| 40 m | ▶ 21,5 | 22,9 | 24 | 26 | 28 | 30 | 32 | 34,8 | m | |
| | | 3000 | 2775 | 2625 | 2375 | 2170 | 1990 | 1835 | 1650 | kg |
| | | | 3000 | 2850 | 2550 | 2350 | 2150 | 2000 | 1800 | kg |

| | | | | | | | |
|--------|------|------|------|------|------|------|----|
| 33,8 m | ▶ 24 | 25,2 | 26 | 28 | 29,3 | m | |
| | | 3000 | 2820 | 2720 | 2485 | 2350 | kg |
| | | | 3000 | 2900 | 2650 | 2500 | kg |

| | | | | | | |
|--------|--------|------|------|------|------|----|
| 31,7 m | ▶ 24,5 | 25,7 | 26 | 27,6 | m | |
| | | 3000 | 2835 | 2795 | 2600 | kg |
| | | | 3000 | 2950 | 2750 | kg |

| | | | | |
|---------|----|------|------|------|
| MEM (m) | 45 | 40 | 33,8 | 31,7 |
| H+2 | - | - | - | - |
| H+1 | 51 | 48,5 | 45,4 | 44,4 |
| H+0 | 48 | 45,5 | 42,4 | 41,4 |
| | 45 | 42,5 | 39,4 | 38,4 |
| | 42 | 39,5 | 36,4 | 35,4 |
| | - | - | - | - |



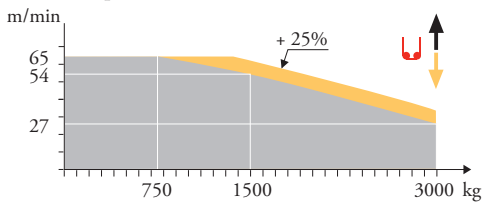
- | | | | | | | |
|--|---|--|---|--|--|---|
| FR | DE | EN | ES | IT | PT | RU |
| ● Réactions en service ■ Réactions hors service | ● Reaktionskräfte in Betrieb ■ Reaktionskräfte außer Betrieb | ● Reactions in service ■ Reactions out of service | ● Reacciones en servicio ■ Reacciones fuera de servicio | ● Reazioni in servizio ■ Reazioni fuori servizio | ● Reacções em serviço ■ Reacções fora de serviço | ● Реакции при работе ■ Реакции в покое |
| 🚚 A vide sans lest (ni train de transport) avec flèche et hauteur maximum. | 🚚 Ohne Last, Ballast (und Transportachse), mit Maximalausleger und Maximalhöhe. | 🚚 Without load, ballast (and transport axes), with maximum jib and maximum height. | 🚚 Sin carga, sin lastre, (ni tren de transporte), flecha y altura máxima. | 🚚 A vuoto, senza zavorra (ne assali di trasporto) con braccio massimo e altezza massima. | 🚚 Sem carga (nem trem de transporte)- sem lastro com lança e altura máximas. | 🚚 Вес без груза, балласта (или транспортных осей), с максимальной длиной стрелы и максимальной высотой. |
| 🚚 Poids total du lest | 🚚 Ballast-Gesamtgewicht. | 🚚 Gross ballast weight. | 🚚 Peso total del lastre. | 🚚 Peso totale della zavorra. | 🚚 Peso total do lastro. | 🚚 общий вес груза |

Mécanismes
Antriebe
Mechanisms
Mecanismos
Meccanismi
Механизмы

MEM7

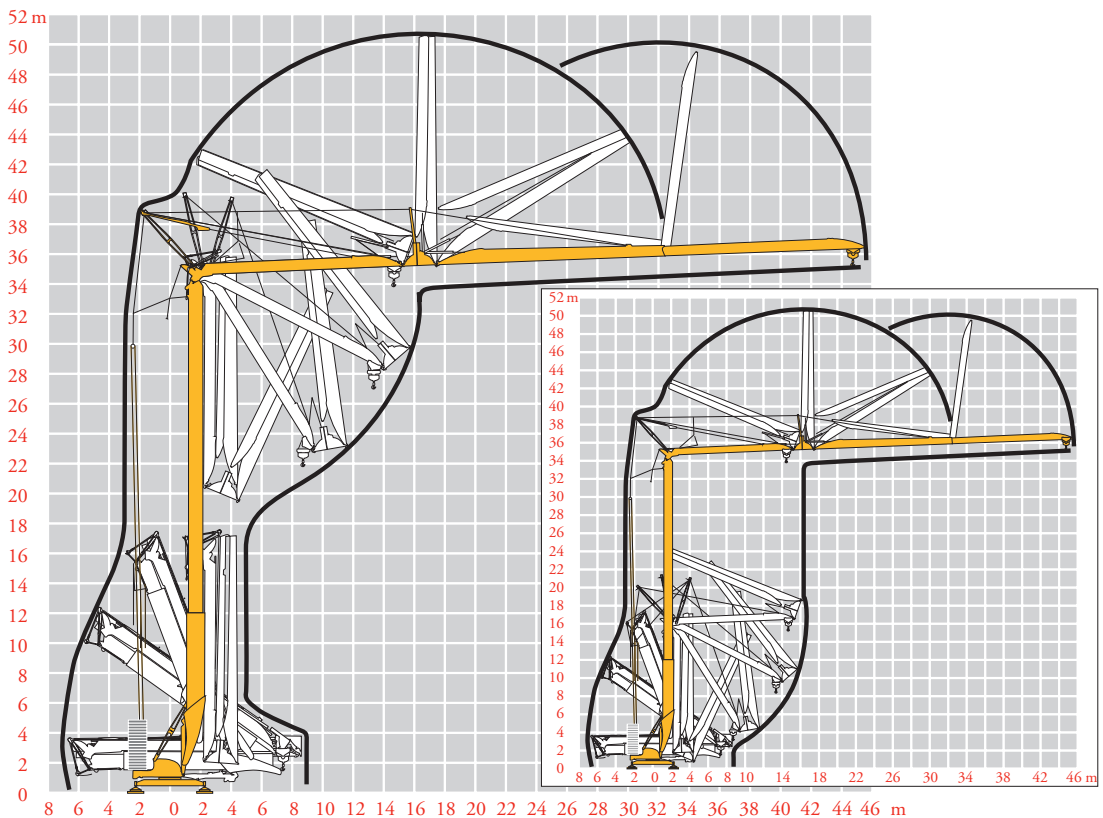
| | | U | | | | | UU | | | | | ch-PS hp | kW | |
|-------------------------|-------------------------|----------------------|--|------|------|--------------------|-----|------|------|------|------|-------------|-------|-------|
| ⬆ | 20 LVF 15 Optima | m/min | 3,2 | 16 | 27 | 54 | 65 | 1,6 | 8 | 13,5 | 27 | 32,5 | 20 | 15 |
| | | kg | 3000 | 3000 | 3000 | 1500 | 750 | 6000 | 6000 | 6000 | 3000 | 1500 | | |
| ⬆ | 5 DVF 5 | m/min | 15 - 30 - 55 (0 → 2000 kg) - 15 - 30 - 40 (2000 → 6000 kg) | | | | | | | | | | 5,5 | 4 |
| ⬆ | RVF 151 Optima + | α/min U/min - rpm | 0 → 0,8 | | | | | | | | | | 5,5 | 4 |
| ⬆ | TVF 324 | m/min | 25 | | | | | | | | | | 2 x 4 | 2 x 3 |
| IEC 60204-32 | | | | | | kVA | | | | | | | | |
| 400 V (+10% -10%) 50 Hz | | | | | | 20 LVF 15 : 31 kVA | | | | | | | | |
| 480 V (+6% -10%) 60 Hz | | | | | | 20 LVF 15 : 31 kVA | | | | | | | | |

20 LVF 15 Optima



Montage
Montage
Erection
Montaje
Montaggio
Montagem
Монтаж

MEM3



FR
Levage
Distribution
Orientation
Translation
Nous consulter

DE
Heben
Katzfahren
Schwenken
Kranfahren
Auf Anfrage

EN
Hoisting
Trolleying
Slewing
Travelling
Consult us

ES
Elevación
Distribución
Orientación
Traslación
Consultarnos

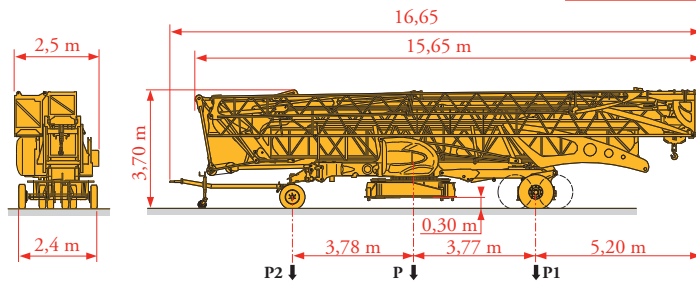
IT
Sollevamento
Distribuzione
Rotazione
Traslazione
Consultateci

PT
Elevação
Distribuição
Rotação
Translação
Consultar-nos

RU
Подъем
Перемещение каретки
Поворот
Перемещение крана
Проконсультируйтесь у нас

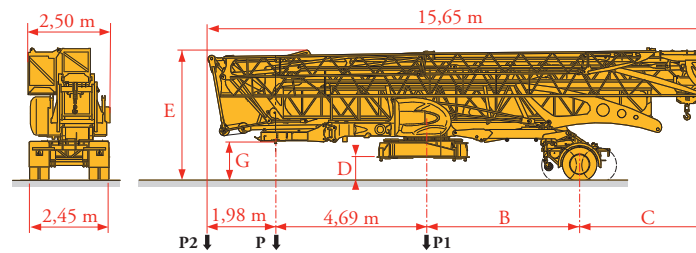
Transport
Transport
Transport
Transporte
Trasporto
Transporte
Транспортировка

MEM 4



| | Km/h | P (kg) | P1 (kg) | P2 (kg) |
|------------|------|--------|---------|---------|
| DJ100/S120 | 10 | 19360 | 11491 | 7869 |
| DJ105/S125 | 25 | 19650 | 11701 | 7949 |

... **



| | Km/h | B (m) | C (m) | D (m) | E (m) | G (m) | P (kg) | P1 (kg) | P2 (kg) |
|-------------|------|-------|-------|-------|-------|-------|--------|---------|---------|
| SL121/J135 | 25 | 4,20 | 4,78 | 0,70 | 4,10 | 1,30 | 20200 | 12800 | 7400 |
| SL122/J215M | 80 | 3,21 | 5,77 | 0,60 | 4,00 | 1,20 | 21050 | 15075 | 5975 |

... **

FR

**

Voir documentations techniques.

DE

Siehe technische Dokumentation.

EN

See technical documentations.

ES

Consulte la documentación técnica.

IT

Vedere la documentazione tecnica.

PT

Consultar documentações técnicas.

RU

см. техническую документацию



Document commercial non contractuel. Pour toute information technique se référer à la notice correspondante.

Unverbindliches Vertriebsdokument. Für technische Informationen, siehe die entsprechenden Anweisungen.

This commercial document is not legally binding. For any technical information, please refer to the corresponding instructions.

Documento commercial no contractual. Para cualquier información técnica, ver la noticia correspondiente.

Documento commerciale non vincolante, per tutte le informazioni tecniche fare riferimento al catalogo istruzioni.

Documento comercial não contratual. Para qualquer informação técnica complementar consultar as respectivas instruções.

Этот коммерческий документ не является юридически обязательным. Для получения технической информации, см. соответствующие инструкции.

Manitowoc

Manitowoc - Americas - World Headquarters
2400 S. 44th Street • Manitowoc • WI 54220 USA
Tel: +1 920 684 4410 • Fax: +1 920 652 9778

Manitowoc - Europe, Middle East & Africa
Ecully, France
18, rue de Charbonnières B.P. 173 • 69132 ECULLY Cedex • FRANCE
Tel: +33 (0)4 72 18 20 20 • Fax: +33 (0)4 72 18 20 00

Manitowoc - Asia Pacific
16F Xu Hui Yuan Building,
1089 Zhongshan No.2 Road (S) • Shanghai 200030 China
Tel: +86 21 6457 0066 • Fax: +86 21 6457 4955

IgoT 85 A

REF. 200711 MEM 7