



FLOOR SAWS	FS 7000 DL	FS 7000 D	FS 5000 D
TECHNICAL SPECIFICATIONS*			
Max depth of cut, mm	623/498	411/374/312	374/312/193
Blade depth control	Electrohydraulic	Electrohydraulic	Electrohydraulic
Max blade diameter, mm	1,500/1,200	1,000/900/750	900/750/500
Arbor size, mm	25.4	25.4	25.4
Transmission max speed, m/min	76	76	40
Engine manufacturer	Deutz	Deutz	Yanmar
Fuel	Diesel	Diesel	Diesel
Engine cooling	Liquid/Air	Liquid/Air	Liquid/Air
Max power, kW**	55.4	55.4	35.5
Power at blade shaft, kW	50.0	50.0	31.0
Number of ribs on belts	16	16	12
Dimensions, mm (L×W×H)	2,710×974×1,499 (2,370×974×1,499 without extension kit)	1,961×974×1,499	1,753×844×1,313
Weight, kg	1,360/1,120	1,120/1,070,1,050	829/817/799
RECOMMENDED EQUIPMENT			
	W70 P	W70 P	W70 P
ARTICLE INFORMATION			
	967 95 92-01, 1,500 mm blade guard, front pivot with 3-speed gearbox, clutch, electrical tracking and fifth wheel	967 94 47-05, 1,000 mm blade guard, front pivot with 3-speed gearbox, clutch and electrical tracking	967 20 73-40, 900 mm blade guard, front pivot with 3-speed gearbox, clutch and electrical tracking
	967 95 92-02, 1,200 mm blade guard, front pivot with 3-speed gearbox, clutch, electrical tracking and fifth wheel	967 94 47-04, 900 mm blade guard, front pivot with 3-speed gearbox, clutch and electrical tracking	967 20 73-38, 750 mm blade guard, front pivot with 3-speed gearbox, clutch and electrical tracking
		967 94 47-03, 1,000 mm blade guard, front pivot with single speed gearbox, clutch and electrical tracking	967 20 73-45, 900 mm blade guard, front pivot with single speed gearbox, clutch and electrical tracking
		967 94 47-02, 900 mm blade guard, front pivot with single speed gearbox, clutch and electrical tracking	967 20 73-39, 500 mm blade guard, front pivot with single speed gearbox, clutch and electrical tracking
		967 94 47-01, 750 mm blade guard, front pivot with single speed gearbox, clutch and electrical tracking	
RRP EXC VAT			
	£ POA	£ POA	£ POA

Selection of variants shown in table. Contact salesman for all variants available. *Full technical specifications are available on our web site. **As rated by the engine manufacturer.

Husqvarna FS 7000 DL and FS 7000 D.

ACCESSORIES AND SPARE PARTS	RRP EXC VAT
1 Blade guard slip-on, 500 mm	586 34 32-02 £561.61
1 Blade guard slip-on, 600 mm	586 34 33-01 £1,331.00
1 Blade guard slip-on, 750 mm	586 34 34-02 £1,335.58
1 Blade guard slip-on, 900 mm	586 34 35-02 £1,514.59
1 Blade guard slip-on, 1,000 mm	586 34 36-01 £1,776.24
2 Dual light kit	585 92 46-01 £532.27
3 Water pump kit	589 33 90-01 £581.53
4 Weight kit, 30 kg	581 67 89-02 £285.74
4 Weight kit, 15 kg	581 67 89-01 £159.74
5 Factory installed fifth wheel kit without weight bracket kit (FS 7000 D)	582 55 72-01 EPOA
5 Factory installed fifth wheel kit with weight bracket kit (FS 7000 D)	501 74 47-01 EPOA
5 Field installed fifth wheel kit (FS 7000 D)	582 30 79-01 £2,239.83
Unit conversion kit 900-1,000 mm for 3-speed gear box	589 55 36-01 EPOA
Unit conversion kit 1,500 mm for 3-speed gear box	589 55 38-01 EPOA

ACCESSORIES AND SPARE PARTS	RRP EXC VAT
1-speed blade shaft belt, 900 mm	524 19 97-64 £46.98
3-speed blade shaft belt, 900 mm	541 20 08-47 £63.25
Blade guard bolt-on system 1,200 mm for 3-speed gear box	582 55 35-01 £3,774.83
Blade guard bolt-on system 1,500 mm for 3-speed gear box	582 55 36-01 £4,718.54
Blade collar (outer flange with drive pin), 114 mm	586 00 92-01 £78.51
Blade collar (outer flange with drive pin), 127 mm	586 00 93-01 £162.95
Blade collar (outer flange with drive pin), 152 mm	586 00 94-01 £109.11
Blade collar (outer flange with drive pin), 178 mm	586 00 95-01 £144.76
Blade shaft wrench	504 62 64-03 £77.28
Drive pin, 350-750 mm	505 53 19-01 £2.39
Drive pin, 900-1,000 mm	539 30 00-10 £2.44

900 & 1,000 mm slip on blade guards require a fitting kit to be able to fit them to a FS 7000 DL.



FS 3500 G

311
 Electrohydraulic
 750
 25.4
 45
 Kohler
 Petrol
 Air
 27.5
 21.5
 25
 1.410×800×1.135
 419

W70 P

967 67 37–10, 750 mm blade guard

£ POA

Husqvarna FS 5000 D.

ACCESSORIES AND SPARE PARTS		RRP	EXC VAT
1	Blade guard slip-on, 350 mm	586 34 31-01	£1,422.81
1	Blade guard slip-on, 500 mm	586 34 32-02	£1,331.00
1	Blade guard slip-on, 600 mm	586 34 33-01	£1,331.00
1	Blade guard slip-on, 750 mm	586 34 34-02	£1,335.58
1	Blade guard slip-on, 900 mm	586 34 35-02	£1,514.59
2	Dual light kit	585 92 46-01	£532.27
3	Water pump kit	589 33 90-01	£581.53
5	Factory installed fifth wheel kit (FS 5000 D)	501 74 46-01	£1,876.00
5	Field installed fifth wheel kit (FS 5000 D)	582 30 78-01	£1,932.28
	3-speed blade shaft belt 750 mm	585 51 50-01	£46.73
	Blade collar (outer flange with drive pin), 114 mm	586 00 92-01	£78.51
	Blade collar (outer flange with drive pin), 127 mm	586 00 93-01	£162.95
	Blade collar (outer flange with drive pin), 152 mm	586 00 94-01	£109.11
	Blade shaft wrench	504 62 64-03	£77.28
	Drive pin, 350–750 mm	505 53 19-01	£2.39
	Drive pin, 900–1,000 mm	539 30 00-10	£2.44



Husqvarna FS 3500 G.

ACCESSORIES AND SPARE PARTS		RRP	EXC VAT
3	Water pump kit (factory installed)	590 86 96-01	£POA
3	Water pump kit (field installed)	592 91 67-01	£POA
	12 V outlet (factory installed)	591 11 75-01	£POA
	12 V outlet (field installed)	592 91 73-01	£POA
	Transportation wheel (factory installed)	590 87 98-01	£POA
	Transportation wheel (field installed)	592 91 69-01	£POA
	Water safety switch (factory installed)	590 87 13-01	£POA
	Water safety switch (field installed)	592 91 68-01	£POA
	Light kit (factory installed)	591 13 96-01	£POA
	Light kit (field installed)	592 91 75-01	£POA
	Parking brake (factory installed)	590 89 45-01	£POA
	Parking brake (field installed)	592 91 72-01	£POA
	Easy lubrication (factory installed)	590 88 80-01	£POA
	Easy lubrication (field installed)	592 91 71-01	£POA
	Weight, 1 piece, max 2	501 74 66-01	£POA

For complete list of spare parts see Illustrated Part List (IPL) on our web site.

**TAKE CARE OF CONCRETE
 DUST AND SLURRY IN A SMART
 EASY AND EFFICIENT WAY!**

SEE THE SYSTEMS GUIDE ON PAGE 70



FLOOR SAWS	FS 524	FS 500 E	FS 413
TECHNICAL SPECIFICATIONS*			
Max depth of cut, mm	241	192	189
Blade depth control	Handwheel	Handwheel	Handwheel
Max blade diameter, mm	600	500	500
Arbor size, mm	25.4	25.4	25.4
Engine manufacturer	Honda	—	Honda
Engine cooling	Air	—	Air
Max power, kW**	15.5	7.5	8.7
Fuel	Petrol	Electric	Petrol
Vibration emission left handle, m/s ²	2.8	1.6	2.9
Vibration emission right handle, m/s ²	2.5	1.9	3.4
Sound power level measured, dB(A)	109	105	103
Sound power level guaranteed, dB(A)	111	107	104
Sound pressure level, dB(A)	89	83	87
Dimensions, mm (L×W×H)	1,750×660×1,200	1,170×560×1,000	1,550×655×1,200
Weight, kg	231	145	163
RECOMMENDED EQUIPMENT			
	W 70 P	W 70 P	W 70 P
ARTICLE INFORMATION			
	967 04 61-02, incl. water tank	967 96 36-01	965 15 01-02, incl. water tank
RRP EXC VAT	£ 7,898.00	£ 3,522.00	£ 3,198.00

*Full technical specifications are available on our web site. **As rated by the engine manufacturer.

Husqvarna FS 524.

ACCESSORIES AND SPARE PARTS		RRP	EXC VAT
1	Water tank kit	541 20 82-86	£83.01
2	Lifting bail	522 47 87-02	£141.62
	Blade flange outer with pin	542 16 79-62	£53.95
	Blade nut	542 16 78-46	£4.91
	Blade shaft belt (FS 524)	588 76 89-01	£33.41
	Lower transmission belt	588 76 94-01	£14.86
	Upper transmission belt	588 76 93-01	£24.48
	Wrench 27 mm	542 20 22-92	£2.79

Husqvarna FS 305.

ACCESSORIES AND SPARE PARTS		RRP	EXC VAT
	Blade flange outer	589 37 85-01	£71.62
	Blade screw	725 25 34-71	£3.59
	Blade shaft belt (FS 305)	588 76 82-01	£19.10
	Wrench 16/18 mm	543 04 59-04	£23.64
	Wrench 13 mm	543 04 58-91	£3.37

For complete list of spare parts see Illustrated Part List (IPL) on our web site.

Husqvarna FS 400 Series.

ACCESSORIES AND SPARE PARTS		RRP	EXC VAT
2	Lifting bail (FS 410 D, FS 413)	522 47 87-02	£141.62
	Blade flange outer with pin	542 16 79-62	£53.95
	Blade shaft belt (FS 410 D)	588 76 86-01	£32.57
	Blade shaft belt (FS 413)	588 76 87-01	£36.06
	Water tank kit	541 20 82-86	£83.01
	Wrench 27 mm	542 20 22-92	£2.79

Husqvarna FS 400 LV.

ACCESSORIES AND SPARE PARTS		RRP	EXC VAT
	Blade flange kit (inner and outer flange)	595 28 08-01	£93.95
	Blade shaft belt	588 76 85-01	£34.26
	Wrench 16/18 mm	543 04 59-04	£23.64



1 Water tank kit for FS 400 series



2 Lifting bail for FS 400 series



FS 410 D



FS 400 LV



FS 305

189	162/189	125
Handwheel	Handwheel	Handwheel
500	450/500	350
25.4	25.4	25.4
Yanmar	Honda	Honda
Air	Air	Air
6.6	8.7	3.6
Diesel	Petrol	Petrol
4.2	3.5	4.7
4.4	3.5	4.4
107	107	106
108	108	108
91	89	85
1,550×655×1,200	1,150×590×940	915×381×990
163	99/120	54
W 70 P	W 70 P	W 70 P
965 15 01-16, incl. water tank	965 14 82-01, 450 mm 967 79 65-01, 500 mm	965 15 00-26, incl. water tank
£ 4,299.00	450 mm - £ 2,300.00 500 mm - £ 2,584.00	

TAKE CARE OF CONCRETE

**DUST AND SLURRY IN A SMART
EASY AND EFFICIENT WAY!**

SEE THE SYSTEMS GUIDE ON PAGE 70



Blades for high- and mid-powered floor saws.

MACHINE POWER

PRODUCT

SEGMENT SHAPE

MATERIAL

Cured concrete, hard
 Cured concrete, medium
 Cured concrete, soft
 Green concrete, hard
 Green concrete, soft
 Asphalt, hard
 Asphalt, soft

RECOMMENDED EQUIPMENT

Blades for low-powered floor saws.

DIAMOND BLADES FOR FLOOR SAWING

Husqvarna floor sawing diamond blades cover most applications, ranging from sawing asphalt to sawing in heavily reinforced concrete, with equipment ranging from small electric units to large diesel-powered machines. Husqvarna also offers blades developed for slot cutting for electric and electronic cables as installation of traffic loops. The slot cutting blades can also be used in other joint widening applications.

MACHINE POWER

PRODUCT

SEGMENT SHAPE

MATERIAL

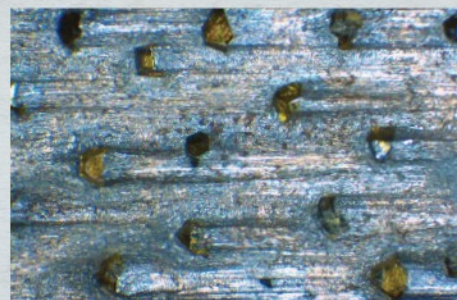
Natural stone
 Reinforced concrete
 Abrasive material
 Green concrete
 Asphalt

RECOMMENDED EQUIPMENT

Revolutionary diamond tool technology for great cutting capacity and durability.

One of the greatest benefits with the Diagrip™ technology is how fast and smooth the diamond tools go through all types of construction materials. Diagrip™ tools mean trouble-free sawing, especially in heavily reinforced concrete.

The diamonds are specially treated to remain in place in the segments longer, and are distributed optimally, delivering maximum efficiency to every diamond. With Diagrip™ the diamonds are exposed and expended at an even rate, which makes the edge very even and powerful, even when cutting hard materials like reinforced concrete.





F1500 DIAGRIP™



F1570

F1100



L600

35 KW		→ 35 KW		→ 35 KW		35 → KW	
F1510	F1520	F1530	F1540	F1570	F1170	L630	L680
●●●	●●	●●	—	—	—	●●	—
●●	●●●	●●●	●●	—	—	●●●	—
—	—	—	●●●	—	—	—	—
—	—	—	—	—	—	—	—
—	—	—	—	●●●	●●●	—	●●●
—	—	—	—	●●●	●●	—	●●●
FS 4800, FS 5000 D		FS 7000 D, FS 8400 D		FS 7000 D	FS 5000 D	FS 5000 D, FS 4800 D	

●●● = Optimal ●● = Good ● = Acceptable — = Not recommended



ELITE-CUT

VARI-CUT

TACTI-CUT

3.5-25 KW				3.5-25 KW			3.5-25 KW		
S35	S45	S65	S85	S45	S65 PLUS	S85	S50 PLUS	S65	S85
●●●	—	—	—	—	—	—	—	—	—
●●	●●●	●●●	●	●●●	●●●	●	●●	●●●	●
—	●	●●	●●●	—	●●●	●●	—	●●	—
—	—	●	—	—	●	●●●	—	●	●●●
FS 524, FS 500 E, FS 413/410 D, FS 400 LV, FS 305									

●●● = Optimal ●● = Good ● = Acceptable — = Not recommended



ELITE-CUT S35

- GOLD
- SILVER
- BRONZE

See page 18 for more information.

SPEED BRIDGE The Elite-Cut S 35 blade feature a specially designed Speed Bridge between the segments. This design improves the cutting speed and smoothness even further through reduced lateral friction, better cooling and improved dust evacuation.

Husqvarna F 1510 / F 1520 / F 1530 / F 1540 Diagrip™.

Gold level blades for high-powered floor saws. Wide range of blades to deliver optimal performance in every application.

PRODUCT NUMBER	DIAMETER, MM	WATER SLOTS	SEGMENT LENGTH, MM	SEGMENT WIDTH, MM	BORE, MM	BOLT PATTERN	RRP, EXC. VAT
HUSQVARNA F 1510							
597 15 43-01	600	Narrow	40	4.2	25.4	PL70132	£603.49
597 15 43-03	600	Narrow	40	5.0	25.4	PL70132	£603.49
597 15 45-01	750	Narrow	40	4.7	25.4	PL70132	£1,002.99
597 15 45-02	750	Narrow	40	4.7	25.4	PL70132	£1,002.99
597 15 46-02	900	Narrow	40	4.7	25.4	PL70135	£1,197.99
597 15 47-01	1,000	Narrow	40	4.5	25.4	PL70135	£1,332.49
592 75 23-14	1,200	Narrow	40	4.5	25.4	PL70135	£1,955.49
592 75 23-15	1,500	Narrow	40	4.5	25.4	PL70135	£3,070.49
HUSQVARNA F 1520							
597 15 48-01	600	Narrow	40	4.2	25.4	PL70132	£603.49
597 15 48-03	600	Narrow	40	5.0	25.4	PL70132	£603.49
597 15 50-01	750	Narrow	40	4.2	25.4	PL70132	£1,002.99
597 15 50-03	750	Narrow	40	4.7	25.4	PL70132	£1,002.99
591 09 86-21	900	Narrow	40	4.2	25.4	PL70135	£1,197.99
597 15 51-02	900	Narrow	40	4.7	25.4	PL70135	£1,197.99
597 15 52-01	1,000	Wide	40	4.5	25.4	PL70135	£1,332.49
591 09 86-19	1,200	Wide	40	4.5	25.4	PL70135	£1,955.49
591 09 86-20	1,000	Wide	40	4.5	25.4	PL70135	£3,070.49
HUSQVARNA F 1530							
597 15 56-01	600	Narrow	40	4.2	25.4	PL70132	£603.49
597 15 56-04	600	Narrow	40	5.0	25.4	PL70132	£603.49
597 15 59-01	750	Narrow	40	4.2	25.4	PL70132	£1,002.99
597 15 59-03	750	Narrow	40	4.7	25.4	PL70132	£1,002.99
591 09 87-26	900	Narrow	40	4.2	25.4	PL70135	£1,197.99
597 15 60-02	900	Narrow	40	4.7	25.4	PL70135	£1,197.99
597 15 61-01	1,000	Wide	40	4.5	25.4	PL70135	£1,332.49
591 09 87-16	1,200	Wide	40	4.5	25.4	PL70135	£1,601.49
591 09 87-17	1,500	Wide	40	4.5	25.4	PL70135	£3,070.49
HUSQVARNA F 1540							
597 15 62-01	600	Narrow	40	4.2	25.4	PL70132	£603.49
597 15 62-02	600	Narrow	40	4.7	25.4	PL70132	£603.49
597 15 62-04	600	Narrow	40	5.0	25.4	PL70132	£603.49
597 15 64-01	750	Narrow	40	4.2	25.4	PL70132	£1,002.99
597 15 64-03	750	Narrow	40	4.7	25.4	PL70132	£1,002.99
597 15 65-01	900	Narrow	40	4.2	25.4	PL70135	£1,197.99
597 15 65-03	900	Narrow	40	4.7	25.4	PL70135	£1,197.99
597 15 66-01	1,000	Wide	40	4.5	25.4	PL70135	£1,332.49
591 12 40-14	1,200	Wide	40	4.5	25.4	PL70135	£1,601.49

1,200 and 1,500 mm F 1500 series concrete blades are delivered with PL70135 hole pattern as standard.

Husqvarna F 1570 Diagrip™.

Gold level asphalt blades with recessed or lowered segments as undercut protection.

PRODUCT NUMBER	UNDERCUT PROTECTION	DIAMETER, MM	WATER SLOTS	SEGMENT LENGTH, MM	SEGMENT WIDTH, MM	BORE, MM	RRP EXC VAT
592 74 62-01	Recessed	500	Narrow	40	4.5	25.4	£849.99
592 74 62-02	Recessed	600	Narrow	40	4.5	25.4	£1,035.99
592 74 62-05	Recessed	750	Narrow	40	4.5	25.4	£1,365.49

Husqvarna F 1170.

Silver level asphalt blades with recessed or lowered segments as undercut protection.

PRODUCT NUMBER	UNDERCUT PROTECTION	DIAMETER, MM	WATER SLOTS	SEGMENT LENGTH, MM	SEGMENT WIDTH, MM	BORE, MM	RRP EXC VAT
589 55 42-01	Recessed	500	Wide	40	4.5	25.4	£741.49
583 81 17-02	Recessed	600	Wide	40	4.5	25.4	£824.99
589 55 44-01	Recessed	750	Wide	40	4.5	25.4	£1,038.99
589 35 44-02	Recessed	900	Wide	40	4.5	25.4	£1,361.99
589 55 45-01	Recessed	1,000	Wide	40	4.5	25.4	£1,791.99
589 35 66-02	Recessed	1,200	Wide	40	4.5	25.4	£1,860.99

Other dimensions available on request.

