



# MTA SERIES

CONSTRUCTION TELESCOPIC HANDLERS





# SUCCESS THROUGH IMAGINATIVE POWER

MANITOU, the world's largest manufacturer of all-terrain material handling equipment, began its roots in a family tradition of innovation and imaginative power. For generations, the Braud family has dedicated themselves to creating innovative products for the lifting and handling markets.

Manufacturing its first forklift truck in 1953, MANITOU is a pioneer in the rough terrain forklift market. By responding to market trends, MANITOU offers a complete line of rough terrain handling equipment adapted to the specific needs and challenges of each industry.

The long history of reliable, relevant equipment has led to more than 500,000 MANITOU machines operating daily in more than 120 countries. This worldwide presence is backed up by a MANITOU dealer network staffed with trained mechanics and sales specialists to help you with your material handling requirements.

# REACHING NEW HEIGHTS

The MANITOU MTA Series telescopic handlers, provide superior performance meeting the needs of today's jobsite demands. Lifting up to 12,000 lbs. (5444 kg) (MTA 12042) with lift heights up to 55'1" (16.8 m) (MTA 10055), these machines provide the extra working capacity without sacrificing the comfort and durability expected in the MTA Series telescopic handlers.

## **MTA 5519**

5,500 lbs. (2495 kg) lift capacity  
19'1" (5.8 m) lift height  
68 hp (50.7 kW)



## **MTA 6034**

6,000 lbs. (2722 kg) lift capacity  
34'3" (10.4 m) lift height  
74 hp (55 kW)



## **MTA 6642**

6,600 lbs. (2994 kg) lift capacity  
42'0" (12.8 m) lift height  
120 hp (89 kW)



## **MTA 8044**

6,600 lbs. (2994 kg) lift capacity  
42'0" (12.8 m) lift height  
120 hp (89 kW)



## **MTA 10044**

10,000 lbs. (4536 kg) lift capacity  
44'0" (13.4 m) lift height  
120 hp (89 kW)



## **MTA 10055**

10,000 lbs. (4536 kg) lift capacity  
55'1" (16.8 m) lift height  
120 hp (89 kW)



## **MTA 12042**

12,000 lbs. (5444 kg) lift capacity  
42'4" (12.9 m) lift height  
120 hp (89 kW)



# PERFORMANCE

■ POWER and ■ PERFORMANCE

## SUPERIOR STRENGTH AND DURABILITY

### ■ PROVEN RELIABILITY = PROFITABILITY

High quality components are at the core of the MTA Series – reducing downtime and increasing your bottom line. These machines are continuously sought after for their unmatched performance, reliability, ease of operation, and comfort.

### ■ TIER IV-CERTIFIED ENGINES

All Manitou MTA Series Telescopic Handlers are equipped with Tier IV-certified diesel engines.

MTA 5519 **Yanmar - 68 hp (50.7 kW)**

MTA 6034 **Deutz - 74 hp (55 kW)**

MTA 6642 - **Cummins - 120 hp (89 kW)**  
MTA 12042

### ■ FOUR-PLATE BOX SECTION BOOMS

Durable design can easily handle the 5,500 to 12,000 lbs. (2495 to 5444 kg) rated loads of the MTA Series.

### ■ SELF LEVELING FORKS

This standard feature automatically levels the forks or attachment as the boom is raised, eliminating the need for manual adjustments.



■ **MAXIMUM LIFT HEIGHTS**

MTA 5519	<b>19'1" (5.8 m)</b>
MTA 6034	<b>34'3" (10.4 m)</b>
MTA 6642	<b>42'0" (12.8 m)</b>
MTA 8044	<b>44'0" (13.4 m)</b>
MTA 10044	<b>44'0" (13.4 m)</b>
MTA 10055	<b>55'1" (16.8 m)</b>
MTA 12042	<b>42'4" (12.9 m)</b>



■ **EXCEPTIONAL VISIBILITY**

Large, open concept frame design with high-mounted boom allows the operator to have views from all sides of the operator station.

■ **FRAME LEVELING  $\pm 10^\circ$**

The MTA 6034 through MTA 12042 machines come standard with frame leveling, making it easy to travel and work on uneven surfaces.

■ **MULTIPLE TIRE OPTIONS**

- ▶ Air-filled
- ▶ Foam-filled
- ▶ Solid Rubber
- ▶ Turf
- ▶ Rock Tread - Air / Foam

*Turf tires available only on MTA 5519.  
Rock tread tires not available for MTA 5519 and MTA 6034.*

■ **REAR AXLE STABILIZATION**

Stabilizer cylinder locks the rear axle to improve stability whenever the boom is raised 60 degrees or more, or the parking brake is applied.

*Standard on MTA 6642, MTA 8044, MTA 10044, MTA 10055 and MTA 12042*

■ **RATED OPERATING CAPACITIES**

MTA 5519	<b>5,500 lbs. (2495 kg)</b>
MTA 6034	<b>6,000 lbs. (2722 kg)</b>
MTA 6642	<b>6,600 lbs. (2994 kg)</b>
MTA 8044	<b>8,000 lbs. (3629 kg)</b>
MTA 10044	<b>10,000 lbs. (4536 kg)</b>
MTA 10055	<b>10,000 lbs. (4536 kg)</b>
MTA 12042	<b>12,000 lbs. (5444 kg)</b>



■ **OUTRIGGERS**

Increase stability and lift capacity on demand when lifting to full height.

*Optional on MTA 6642, MTA 8044, MTA 10044, and MTA 12042; standard on the MTA 10055.*

# OPERATOR'S CAB

## ■ SAFETY and ■ COMFORT



### ■ PREMIUM SEAT

Standard deluxe, high-back mechanical suspension seat or an optional adjustable suspension seat for increased operator comfort. Retractable seatbelt included.

### ■ ADJUSTABLE ARMREST

### ■ SPACIOUS CAB

With ergonomics in mind, the large operator station brings ample elbow room for boom control accuracy and ease.

### ■ VISIBILITY

Low-profile boom and open-concept frame design provide a 360 degree field-of-view to all work areas for increased precision and safety.

### ■ TRI-FUNCTION JOYSTICK OPTION

Controls attachment tilt, auxiliary hydraulics and boom functions with an optional single joystick and speed control knobs.

*Not available on MTA 5519*

### ■ ALL-WEATHER CAB

Optional, sealed cab enclosure with heat allows you to work in constant comfort. Add air-conditioning for an upgraded operating climate.

OPERATOR STATION COMFORT FEATURES



**WITHIN REACH**  
Lights, parking brake, and all other controls conveniently near the adjustable armrest.



**POWER PORT**  
Standard 12-volt accessory plug charges electronics while you work.



**GLASS WINDOWS**  
Rear and right-hand side glass are standard equipment to reduce engine noise to the cab.



**DIGITAL DISPLAY**  
This information center shows real time fluid levels, engine RPM, machine hours, engine diagnostic codes, warning indicators and much more.



**LOCKABLE STORAGE**  
Located under the seat, this spacious, lockable storage area holds items you need throughout the day.



**HEAT & AIR CONDITIONING**  
Heat is standard on all cab models. Upgrade to air conditioning for additional operator comfort.

THREE STEERING MODES



# SERVICE & SAFETY

■ SAFETY and ■ PRODUCTIVITY

■ EXCELLENT 360 DEGREE VISIBILITY

FRONT

LEFT SIDE

REAR

RIGHT SIDE

## EXPANSIVE VIEWS FROM ALL SIDES FOR SAFE AND PRECISE OPERATION.

Excellent visibility to the front, sides and rear of the machine allow for precise placement of loads and reduced jobsite incidents. A high-mounted boom maintains an excellent vantage point to the job at hand.



# INCREASED PRODUCTIVITY ON THE JOBSITE



### BOOM TIP LIFT HOOK

This option provides a secure lifting point for transporting suspended loads without the use of an additional attachment.

*Not available on the MTA 5519 or the MTA 6034*



### SERVICE MADE EASY

Accessible, tool-free panels allow for quick and easy maintenance, drastically reducing downtime on the job.

### PERSONNEL WORK PLATFORM (PWP) SYSTEM

The optional Manitou PWP System allows the safe and efficient use of an ANSI/ITSDF B56.6 compliant work platform.

The PWP System makes every job almost as easy as working at ground level. When the system is engaged the transmission is temporarily disconnected, the rear axle stabilizer is engaged, the frame leveling speed is reduced, and the parking brake is applied. A remote shut-off is located on the platform. This increases safety and allows for precise positioning.

*Not available on MTA 5519 or MTA 6034*

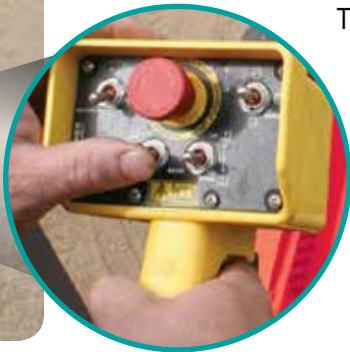


### REMOTE BOOM CONTROL (RBC) SYSTEM

With the RBC System option, a single operator can control boom and engine functions from outside the cab. When placing loads, an operator can leave the cab to control boom functions from a location that has better visibility – even from within a building.

The RBC System is compatible with any ANSI/ITSDF B56.6 compliant work platform and includes all the safety features of the PWP System.

*Not available on MTA 5519*



# ATTACHMENTS

## ATTACHMENTS

### CRABE VERSATILITY? MANITOU MTA SERIES TELESCOPIC HANDLERS ARE THE PERFECT SOLUTION.

Get the versatility you need to complete the job with a wide variety of attachments. With the MTA Series Telescopic Handlers, your operation can do anything from material handling to lifting workers.



### GET QUICKLY ATTACHED

The Quick-Attach system allows attachments to be interchanged with unsurpassed ease. The operator leaves the seat only to disengage the attachment.



BEST SELLERS LIST

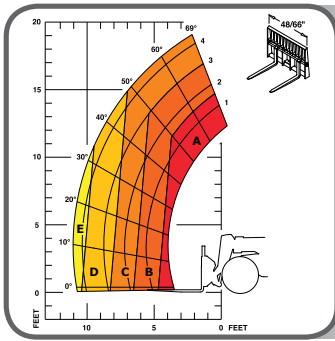
	MTA 5519	MTA 6034	MTA 6642	MTA 8044	MTA 10044	MTA 10055	MTA 12042
<b>BUCKETS</b>							
Light Material Bucket - 96 in. (2438 mm) Wide, 1.3 cu. yd. (.99 cu. m.)		•	•	•	•	•	•
Light Material Bucket - 71 in. (1803 mm) Wide, 1.0 cu. yd. (.76 cu. m.)	•						
<b>CARRIAGES</b>							
Carriage, Masonry - 48 in. (1219 mm) Wide w/ 2 in. (50 mm) Pin / Rated 6,000 lbs. (2,721 kg)	•	•					
Carriage, Masonry - 48 in. (1219 mm) Wide w/ 2 in. (50 mm) Pin / Rated 10,000 lbs. (4,535 kg)			•	•	•	•	
Carriage, Masonry - 48 in. (1219 mm) Wide w/ 2.5 in. (63 mm) Pin / Rated 12,000 lbs. (5,443 kg)							•
Carriage, Rotating * - 48 in. (1219 mm) Wide w/ 2 in. (50 mm) Pin / Rated 6,000 lbs. (2,721 kg)	•	•					
Carriage, Rotating * - 48 in. (1219 mm) Wide w/ 2 in. (50 mm) Pin / Rated 10,000 lbs. (4,535 kg)			•	•	•	•	
Carriage, Rotating * - 48 in. (1219 mm) Wide w/ 2.5 in. (63 mm) Pin / Rated 12,000 lbs. (5,443 kg)							•
Carriage, Framers - 66 in. (1676 mm) Wide w/ 2 in. (50 mm) Pin / Rated 6,000 lbs. (2,721 kg)	•	•					
Carriage, Framers - 66 in. (1676 mm) Wide w/ 2 in. (50 mm) Pin / Rated 10,000 lbs. (4,535 kg)			•	•	•	•	
Carriage, Framers - 66 in. (1676 mm) Wide w/ 2.5 in. (63 mm) Pin / Rated 12,000 lbs. (5,443 kg)							•
Carriage, Framers - 72 in. (1828 mm) Wide w/ 2 in. (50 mm) Pin / Rated 10,000 lbs. (4,535 kg)			•	•	•	•	
<b>FORKS</b>							
Pallet Forks ** - 2 in. x 5 in. x 48 in. (50 mm x 127 mm x 1219 mm) for 2 in. (50 mm) Pin / Rated 10,500 lbs. (4,762 kg)		•	•	•	•	•	•
Pallet Forks - 2 in. x 4 in. x 48 in. (50 mm x 101 mm x 1219 mm) for 2 in. (50 mm) Pin / Rated 8,400 lbs. (3,810 kg)	•	•	•	•			
<b>TRUSS BOOMS</b>							
Truss Boom / 12 ft. (3.6 m) / Rated 2,000 lbs. (907 kg)			•				
Truss Boom / 15 ft. (4.5 m) / Rated 2,000 lbs. (907 kg)				•	•	•	•
<b>PLATFORMS</b>							
Swing Platform - <i>Requires PWP or Remote Boom Control System</i> Dimensions - 4.0 ft. (1.2 m) Wide x 8.0 ft. (2.4 m) Long w/ 42 in. (1066 mm) High Guard Rail & Midrail <i>(Complies with OSHA Regulations 1910.67(c)(2)(v) and 1926.453(b)(2)(v) and ANSI B56.6)</i>			•	•	•	•	•
Personnel Work Platform - <i>Requires PWP or Remote Boom Control System</i> Dimensions - 4.0 ft. (1.2 m) Wide x 9.5 ft. (2.8 m) Long w/ 44 in. (1117 mm) High Guard Rail & Midrail <i>(Complies with OSHA Regulations 1910.67(c)(2)(v) and 1926.453(b)(2)(v) and ANSI B56.6)</i>		•	•	•	•	•	•

\* Auxiliary hydraulics required

\*\* On the MTA 12042, forks need to be used in conjunction with the 90° swing carriage.

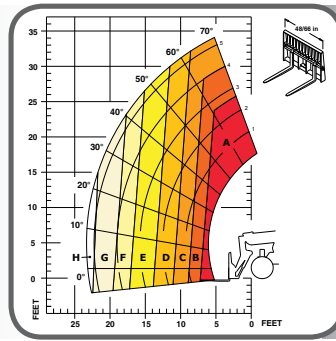
# LOAD CHARTS

## MTA SERIES



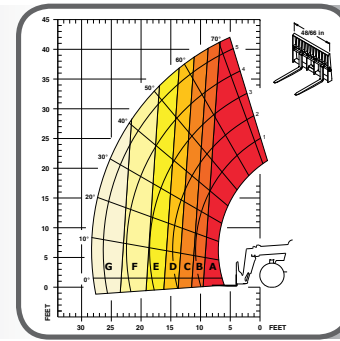
**MTA 5519**

- A** 5,500 lbs. (2495 kg)
- B** 4,000 lbs. (1815 kg)
- C** 3,000 lbs. (1361 kg)
- D** 2,000 lbs. (908 kg)
- E** 1,850 lbs. (840 kg)



**MTA 6034**

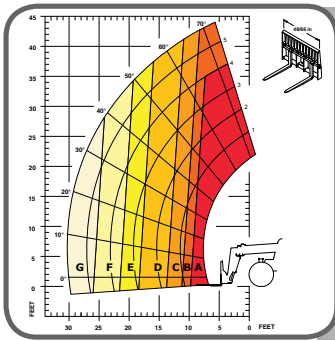
- A** 6,000 lbs. (2722 kg)
- B** 5,000 lbs. (2268 kg)
- C** 4,000 lbs. (1814 kg)
- D** 3,000 lbs. (1361 kg)
- E** 2,000 lbs. (907 kg)
- F** 1,500 lbs. (680 kg)
- G** 1,000 lbs. (454 kg)
- H** 900 lbs. (408 kg)



**MTA 6042**

- A** 6,600/6,600 lbs. (2994/2994 kg)
- B** 6,000/6,600 lbs. (2722/2994 kg)
- C** 5,000/6,000 lbs. (2268/2722 kg)
- D** 4,000/4,000 lbs. (1814/1814 kg)
- E** 3,000/4,000 lbs. (1361/1814 kg)
- F** 2,000/4,000 lbs. (907/1814 kg)
- G** 1,000/3,000 lbs. (454/1361 kg)

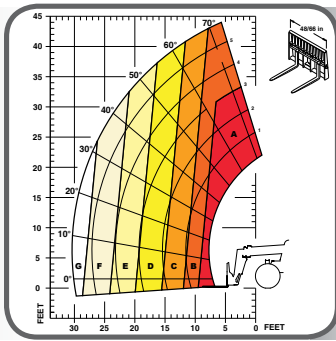
*outriggers up / optional outriggers down*



**MTA 8044**

- A** 8,000/8,000 lbs. (3629/3629 kg)
- B** 7,000/8,000 lbs. (3175/3629 kg)
- C** 6,000/8,000 lbs. (2722/3629 kg)
- D** 4,000/6,000 lbs. (1814/2722 kg)
- E** 3,000/4,000 lbs. (1361/1814 kg)
- F** 2,000/4,000 lbs. (907/1814 kg)
- G** 1,000/3,000 lbs. (454/1361 kg)

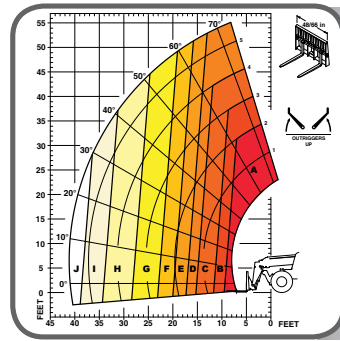
*outriggers up / optional outriggers down*



**MTA 10044**

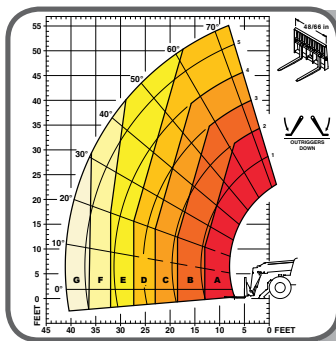
- A** 10,000/10,000 lbs. (4536/4536 kg)
- B** 8,000/8,000 lbs. (3629/3629 kg)
- C** 6,000/8,000 lbs. (2722/3629 kg)
- D** 4,000/6,000 lbs. (1814/2722 kg)
- E** 3,000/6,000 lbs. (1361/2722 kg)
- F** 2,000/4,000 lbs. (907/1814 kg)
- G** 1,500/3,000 lbs. (680/1361 kg)

*outriggers up / optional outriggers down*



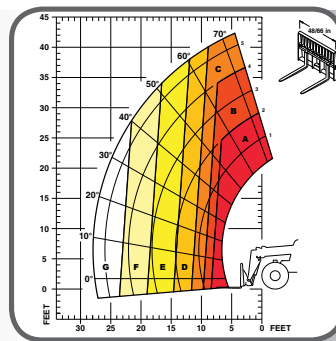
**MTA 10055**  
*outriggers up*

- A** 10,000 lbs. (4536 kg)
- B** 8,000 lbs. (3629 kg)
- C** 6,000 lbs. (2722 kg)
- D** 5,000 lbs. (2268 kg)
- E** 4,000 lbs. (1814 kg)
- F** 3,000 lbs. (1361 kg)
- G** 2,000 lbs. (907 kg)
- H** 1,000 lbs. (454 kg)
- I** 500 lbs. (227 kg)
- J** 250 lbs. (113 kg)



**MTA 10055**  
*outriggers down*

- A** 10,000 lbs. (4536 kg)
- B** 8,000 lbs. (3629 kg)
- C** 6,000 lbs. (2722 kg)
- D** 5,000 lbs. (2268 kg)
- E** 4,000 lbs. (1814 kg)
- F** 3,000 lbs. (1361 kg)
- G** 2,000 lbs. (907 kg)








**MTA 12042**


- A** 12,000/12,000 lbs. (5444/5444 kg)
- B** 10,000/10,000 lbs. (4536/4536 kg)
- C** 8,000/8,000 lbs. (3629/3629 kg)
- D** 6,000/8,000 lbs. (2722/3629 kg)
- E** 4,000/6,000 lbs. (1814/2722 kg)
- F** 3,000/5,000 lbs. (1361/2268 kg)
- G** 2,000/4,000 lbs. (907/1814 kg)

*outriggers up / optional outriggers down*

# MTA SERIES CONSTRUCTION TELESCOPIC HANDLERS SPECIFICATIONS

		MTA 5519	MTA 6034	MTA 6642	MTA 8044	MTA 10044	MTA 10055	MTA 12042
 LIFTING CAPACITIES	Lift Capacity (kg)	5,500 lbs. (2495)	6,000 lbs. (2722)	6,600 lbs. (2994)	8,000 lbs. (3629)	10,000 lbs. (4536)	10,000 lbs. (4536)	12,000 lbs. (5444)
	Maximum Lift Height (m)	19'1" (5.8)	34'3" (10.4)	42'0" (12.8)	44'0" (13.4)	44'0" (13.4)	55'1" (16.8)	42'4" (12.9)
	Capacity at Maximum Lift Height (kg)	3,000 lbs. (1361)	4,000 lbs. (1815)	6,600 lbs. (2994)	7,000 lbs. (3176)	8,000 lbs. (3629)	5,000* lbs. (2268)	10,000 lbs. (4536)
	Maximum Forward Reach (m)	11'0" (3.4)	23'3" (7.0)	28'3" (8.6)	30'5" (9.3)	30'5" (9.3)	41'2" (12.6)	27'11" (8.5)
	Capacity at Max. Forward Reach (kg)	1,850 lbs. (840)	900 lbs. (409)	1,000 lbs. (454)	1,000 lbs. (454)	1,500 lbs. (687)	2,000 lbs. (908)	2,000 lbs. (908)
	Max. Reach Below Grade (mm)	0" (0)	24" (610)	14" (356)	16" (406)	16" (406)	29" (737)	14" (356)
 ENGINE	Manufacturer	Yanmar	Deutz	Cummins	Cummins	Cummins	Cummins	Cummins
	Power (kW)	69 hp (50.1)	74 hp (55)	120 hp (89)	120 hp (89)	120 hp (89)	120 hp (89)	120 hp (89)
	Torque (Nm)	173 ft.-lbs. (235)	244 ft.-lbs. (330)	360 ft.-lbs. (488)	360 ft.-lbs. (488)	360 ft.-lbs. (488)	360 ft.-lbs. (488)	360 ft.-lbs. (488)
	Aspiration	Natural	Turbocharged	Turbocharged	Turbocharged	Turbocharged	Turbocharged	Turbocharged
	Model	4TNV98C Tier IV	TD 3.6 Tier IV	QSF 3.8 Tier IV	QSF 3.8 Tier IV	QSF 3.8 Tier IV	QSF 3.8 Tier IV	QSF 3.8 Tier IV
	Rated Speed	2500 rpm	2300 rpm	2500 rpm	2500 rpm	2500 rpm	2500 rpm	2500 rpm
 COMPONENTS	Transmission	Rexroth 2-speed	Dana 3-speed Powershift	Dana 3-speed Powershift	Dana 3-speed Powershift	Dana 4-speed Powershift	Dana 4-speed Powershift	Dana 4-speed Powershift
	Maximum Travel Speed (km/hr)	15 mph (24)	20.2 mph (32.5)	19.6 mph (31.5)	19.6 mph (31.5)	20.1 mph (32.3)	20.1 mph (32.3)	20.1 mph (32.3)
	Selective Steering	4-wheel 2-wheel Crab	4-wheel 2-wheel Crab	4-wheel 2-wheel Crab	4-wheel 2-wheel Crab	4-wheel 2-wheel Crab	4-wheel 2-wheel Crab	4-wheel 2-wheel Crab
	Hydraulically Actuated Internal Wet-Disc Brakes	2-Wheel	4-Wheel					
	Parking Brake	Spring-Applied, Hydraulic Release (SAHR) on Front Axle						
	Axle Manufacturer	Dana						
 HYDRAULIC SYSTEM	Pump Type	Gear						
	Pump Flow (L/min)	20 gpm (76)	29 gpm (110)	41.5 gpm (157)	41.5 gpm (157)	41.5 gpm (157)	41.5 gpm (157)	41.5 gpm (157)
	System Pressure (bar)	3,350 psi (231)	3,000 psi (207)	3,000 psi (207)	3,000 psi (207)	3,000 psi (207)	3,000 psi (207)	3,000 psi (207)
	Hydraulic Tank Capacity (L)	18 gal. (68)	29 gal. (110)	31 gal. (117)	31 gal. (117)	31 gal. (117)	31 gal. (117)	31 gal. (117)
 GENERAL SPECIFICATIONS	Approximate Weight (kg)	10,000 lbs. (4536)	15,100 lbs. (6850)	22,000 lbs. (9979)	23,500 lbs. (10659)	25,300 lbs. (11476)	27,800 lbs. (12610)	25,200 lbs. (11431)
	Length – Less Forks (m)	12'4" (3.8)	16'0" (4.9)	19'1" (5.8)	19'10" (6.1)	20'0" (6.1)	21'0" (6.4)	19'3" (5.9)
	Width (m)	5'11" (1.80)	7'10" (2.4)	8'0" (2.4)	8'0" (2.4)	8'3" (2.5)	8'3" (2.5)	8'3" (2.5)
	Ground Clearance (mm)	14" (350)	14" (350)	16" (400)	16" (400)	18" (457)	18" (457)	18" (457)
	Wheelbase (m)	7'6" (2.29)	9'2" (2.8)	10'0" (3.0)	10'0" (3.0)	10'4" (3.1)	10'4" (3.1)	10'4" (3.1)
	Turning Radius (m)	11'0" (3.35)	12'6" (3.8)	13'8" (4.2)	13'8" (4.2)	13'11" (4.24)	13'11" (4.24)	13'11" (4.24)
	Overall Height (m)	6'4" (1.93)	7'10" (2.4)	7'10" (2.4)	7'10" (2.4)	7'11" (2.41)	8'6" (2.6)	7'11" (2.41)
	Frame Leveling	N/A	±10°	±10°	±10°	±10°	±10°	±10°
Fuel Capacity (L)	17 gal. (64)	29 gal. (110)	47 gal. (178)	47 gal. (178)	47 gal. (178)	47 gal. (178)	47 gal. (178)	

\* With outriggers down

 TIRE OPTIONS	MTA 5519	MTA 6034	MTA 6642 / MTA 8044	MTA 10044 / MTA 10055 / MTA 12042
	12.00 x 16.5 Bias/10 PR	15.00 x 19.5/12 PR	13.00 x 24/12 PR	14.00 x 12 PR
	12.00 x 16.5 Bias/10 PR Foam-Filled	15.00 x 19.5/12 PR Foam-Filled	13.00 x 24/12 PR Foam Filled	14.00 x 24/12 PR Foam-Filled
	12.00 x 16.5 Solid Rubber	15.00 x 19.5 Solid Rubber	13.00 x 24/12 PR Rock	14.00 x 24 Solid Rubber
		13.00 x 24 Solid Rubber	14.00 x 24 Rock	

This publication in no way constitutes an offer and the company reserves the right to alter specification without notice.



Manitou Americas, Inc. • PO Box 179 • West Bend, WI 53095

Tel: 262-334-9461 • Fax: 262-338-7517 • www.manitou.com

©2015 Manitou Americas, Inc. Manitou. All rights reserved. Printed in the U.S.A. A Manitou Group brand.

10/2015-MTA Series Series-1M