

MK 100/110 mobile construction crane

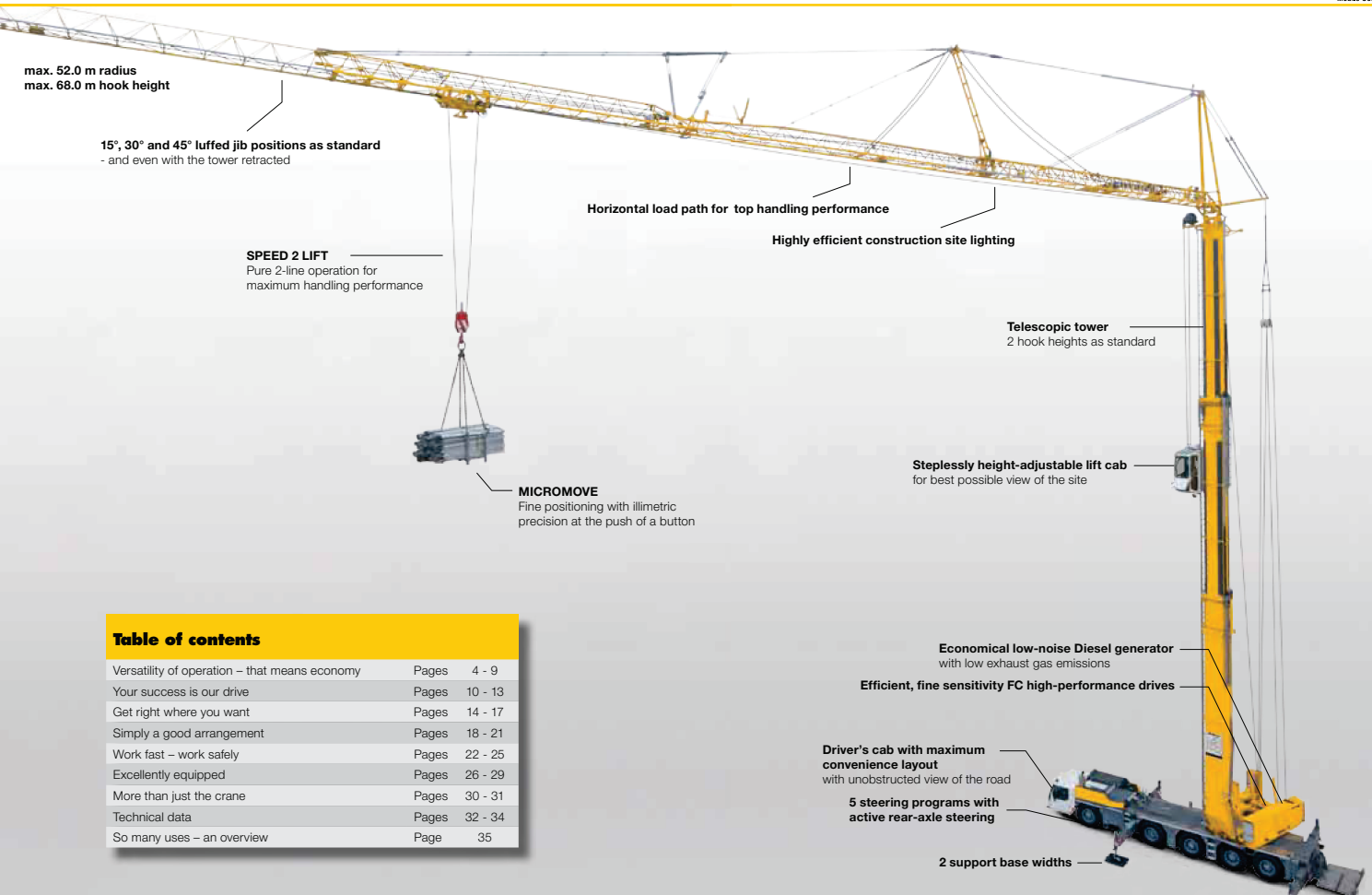


Lifting capacity (max.):	8,000 kg
Reach (max.):	52.0 m
Lifting capacity at jib head:	1,800 kg



LIEBHERR

MK 100/110 mobile construction crane



max. 52.0 m radius
max. 68.0 m hook height

15°, 30° and 45° luffed jib positions as standard
- and even with the tower retracted

SPEED 2 LIFT
Pure 2-line operation for maximum handling performance

Horizontal load path for top handling performance

Highly efficient construction site lighting

Telescopic tower
2 hook heights as standard

Steplessly height-adjustable lift cab
for best possible view of the site

MICROMOVE
Fine positioning with millimetric precision at the push of a button

Economical low-noise Diesel generator
with low exhaust gas emissions

Efficient, fine sensitivity FC high-performance drives

Driver's cab with maximum convenience layout
with unobstructed view of the road

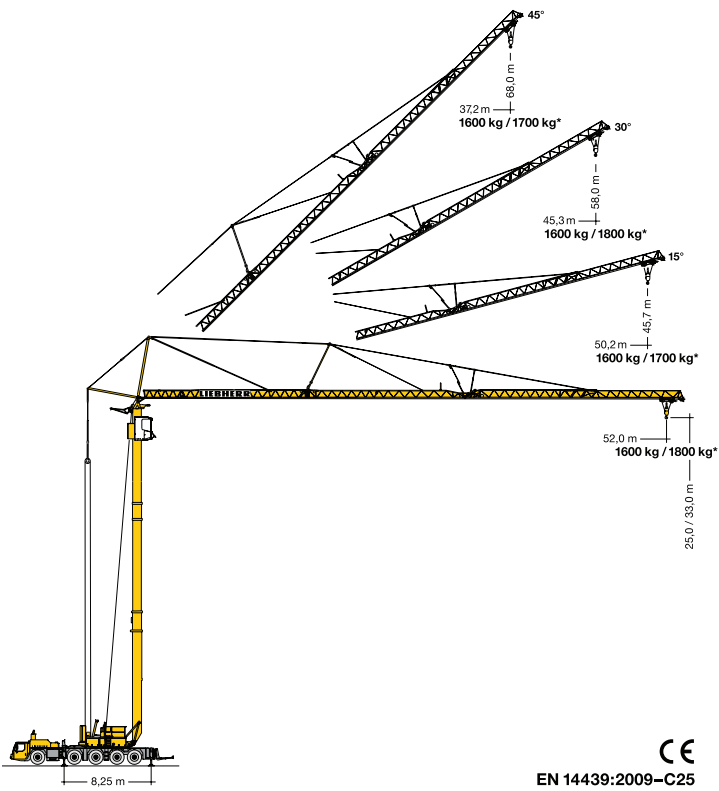
5 steering programs with active rear-axle steering

2 support base widths

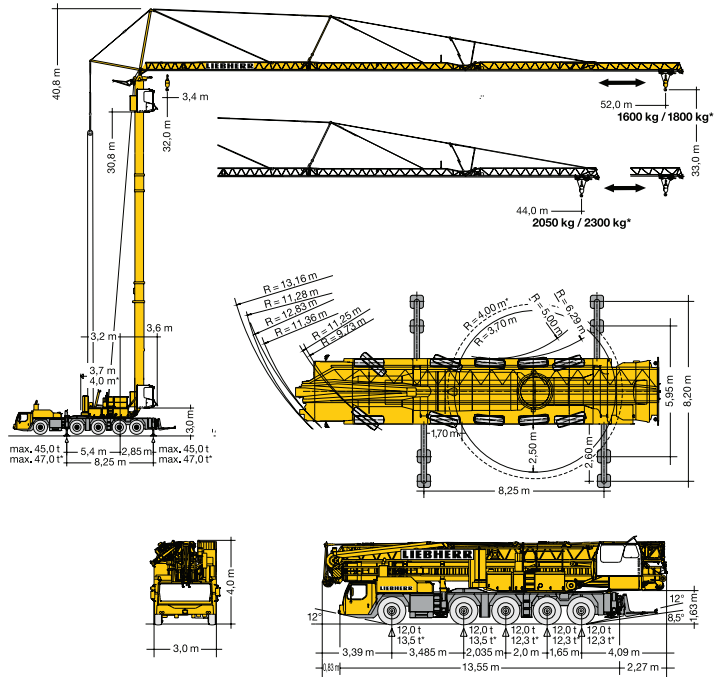
Table of contents

Versatility of operation – that means economy	Pages	4 - 9
Your success is our drive	Pages	10 - 13
Get right where you want	Pages	14 - 17
Simply a good arrangement	Pages	18 - 21
Work fast – work safely	Pages	22 - 25
Excellently equipped	Pages	26 - 29
More than just the crane	Pages	30 - 31
Technical data	Pages	32 - 34
So many uses – an overview	Page	35

Technical data MK 100/110



CE
EN 14439:2009-C25




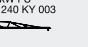







Gewicht Weight / Poids / Peso / Peso / Gewicht / Macca

Gesamtgewicht	60 000 kg	* MK 110 mit 3,8 t Zusatzballast / MK 110 with 3,8 t additional ballast / MK 110 avec lest additionnel de 3,8 t / MK 110 con zavorra addizionale da 3,8 t / con contrapeso adicional de 3,8 t / MK 110 met 3,8 t extra ballast / с дополнительным балластом 3,8 т	60 000 kg + 3 800 kg
Total weight			
Poids total			
Peso total			
Peso total			
Totaalgewicht			
Общая масса			
		Achelasten	> 12,0 t
		Loads per axle / Charges par essieu / Carichi per asse / Peso por eje / Aslasten / Наррузка на мосты	
		Zusatzballast für Straßentransport demontieren, Landvorschriften beachten.	
		Remove additional ballast for road transport, observe country-specific regulations.	
		Démonter le lest additionnel pour le transport sur route, respecter les spécifications des pays individuels.	
		Smontare le zavorra aggiuntiva per il trasporto su strada, rispettare le norme nazionali.	
		Desmontar contrapesos adicionales para tránsito en carretera, véase condiciones en cada país.	
		Extra ballast dient voor wegtransport gedemonteerd te worden, landvoorschriften navolgen.	
		Для транспортировки по дорогам демонтировать дополнительный балласт, учитывать предписания, действующие для данной страны.	

Technical data MK 100/110

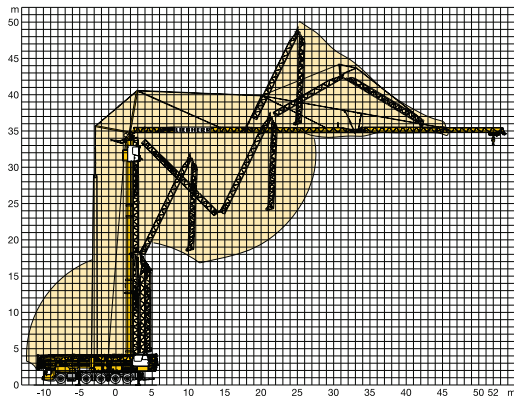
Antriebe Driving units / Mécanismes d'entraînement / Meccanismi / Mecanismos / Aandrijvingen / Приводы

	0 ↔ 0,8 U/min	7,5 kW FU	 ↔ stufenlos / stepless / régl. continu regl. progresiva / sin escalones / traploos Бесступенчатый kg m/min	
	0 ↔ 73,0 m/min	4,0 kW FU		 30,0 kW FU MW 240 KY 003
	0 – 30°	2 min.		 8000 0 ↔ 19 500 0 ↔ 75

	1	2	3	4	5	6	7	8	9	10	11	12	R1	R2	
	5,2	6,7	8,6	11,1	14,0	18,0	23,7	30,5	39,2	50,4	63,9	75,0	5,6	7,2	54%
	2,3	3,0	3,8	5,0	6,3	8,1	10,6	13,6	17,6	22,5	28,6	36,7	2,5	3,2	> 60%

	400 V	Hz	kVA
 14,00 R 25	BGL  C,0,08,0100 C,0,08,0112	96,0 m 5 x 16 mm ²	50 43,0

Aufstellvorgang Erection procedure / Déroulement de montage / Procedimento di montaggio / Procedimiento de montaje / Opstelling van de mobiele torenkraan / Процесс развёртывания



The advantages - at a glance



Pure 2-line operation

Maximum performance at full speed – always.



MICROMOVE

Fine positioning with millimetric precision at the push of a button.



Extra ballast

for even more lifting capacity over the entire moment range.



Wind load control

The control system reacts automatically to the counter-moment on the jib.



One man, one crane

No extra personnel or transport needed.



Electronic load moment limitation

Move the load safely right to the stop.



Taxi crane concept

Deal with multiple operations in one day.



Load oscillation damping

Automatic compensation for jib movements, to keep the load steady.



Low noise emission

for working at night or in noise-sensitive areas.



Operating-range limiting system

Work areas are limited by simple teach-in techniques on the EMS display



Ready to go into action – in only 17 minutes from the supported state.



The horizontal load path of the crane allows for high working speeds, and that means high handling capacities.



Operating data acquisition and evaluation

Acquisition of all operating and performance data from the crane, for evaluation and optimum maintenance and repair.

Don't hang on...



Go for it.



Mobile Construction Crane

Let's stay in touch.

Printed in Germany by Eberl bk-Eder LBC-729-04.12_en

Subject to technical modifications.

Liebherr-Werk Biberach GmbH

Postfach 1663, D-88396 Biberach an der Riß

☎ +49 (0)7351 41-22 45, Fax +49 (0)7351 41-20 09

www.liebherr.com, E-Mail: info.mk@liebherr.com