

The R 941 ^{SERIES} B low-noise hydraulic excavator



LIEBHERR



**A Liebherr excavator operates
as reliably in winter as in summer.
The flame cold start device
ensures that the engine always starts.**



We doubt if you have ever encountered an excavator that can compete on equal terms with the R 941 Series B. In engineering design, performance and operating reliability.

It has a 130 HP power unit and a max. load capacity of 14 metric tons. It has power to spare for heavy trench clearing work, drainage and excavating jobs. For the most arduous duties in rock, quarries and mountain stream diversion. As well as for pipe laying and earth moving.

There is an option of the standard running gear for normal purposes or the LC running gear for applications requiring maximum stability and minimum ground pressure. Or the HD running gear for the very toughest uses.

We believe that you will have difficulty in finding an excavator of such advanced engineering concept. Or an excavator with so many extras provided as standard equipment.

We haven't found one yet.

For the heaviest, most difficult jobs



Here is a case for maximum breakout force.

The R 941 Series B can offer it: 15.5 metric tons. For example, pulling down rock or stone.

Large pipes are a small matter for this model.

Its power reserves and stability make jobs like this no problem at all. An overload warning device ensures operating safety.

Maximum loading rate is what is wanted here.

For example, we can offer various scoop grabs for gravel, up to 1.2 m³ in capacity.



bs, the best we know.

LOVEBARKS NA

On an excavator such as the R 941 Series B, the running gear is particularly important.

It guarantees maximum stability, so that the full breakout force can be employed.

The power units must be high mounted to ensure maximum ground clearance. A robust cover must protect the drive crane.

The tracks should be hydraulically tensioned and the complete running gear maintenance-free.

Points you will learn to appreciate when working over difficult terrain.

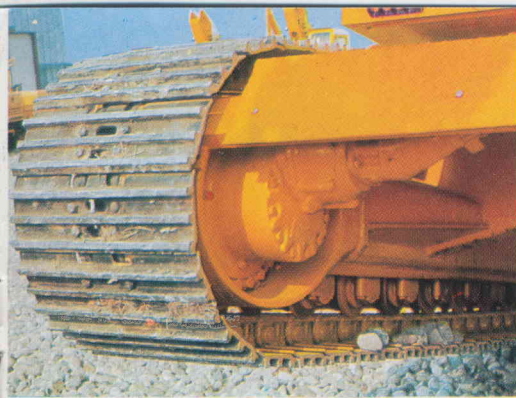


The running gear is entirely maintenance-free.

Crawler tracks are hydraulically tensioned. The idler sprocket is spring loaded to cope with all forces exceeding the normal range of chain tensioner movement. The tracks are accurately guided by the sprocket wheels even under extreme loadings. You can choose between various track widths and grip patterns.



An excavator with its feet firmly

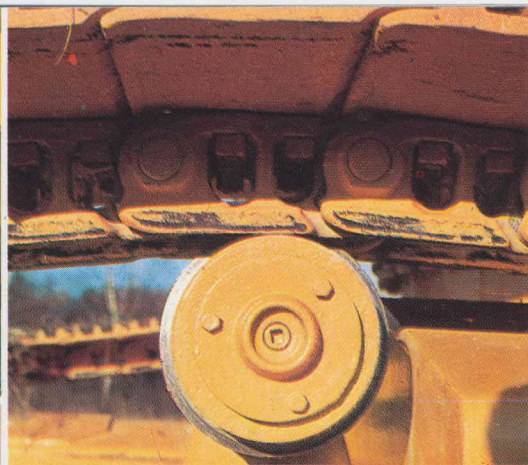


Each side of the excavator is driven by its own hydraulic power unit.

This is an axial piston hydraulic motor with a special planetary gearbox. It is extremely narrow in construction and is therefore fully protected in position between the plates of the frame.

Service and parking brakes are a standard fitting on the running gear.

Exactly as you would expect on an excavator of this quality.

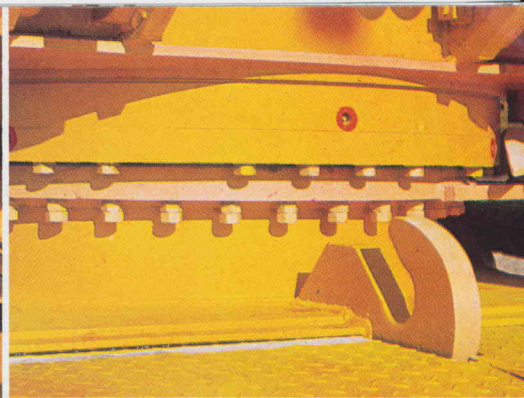


The crawler track support rollers are overhung from their bearings.

The travel gear side members are thus effectively selfcleaning.

The chains are less exposed to wear.

You get longer, better service from your excavator.



An internally geared slewing ring of generous size.

Protected against dust and dirt. Ample dimensions, supported on a torsionally rigid fabricated steel base. Compressed air lubrication of the tooth flanks is controlled from the cab.

All features contributing to extended operating life.



on the ground.



The R 941 Series B has been awarded the test symbol of the German trade association civil engineering committee.

This is granted only to excavators which meet the operating safety requirements of the committee.

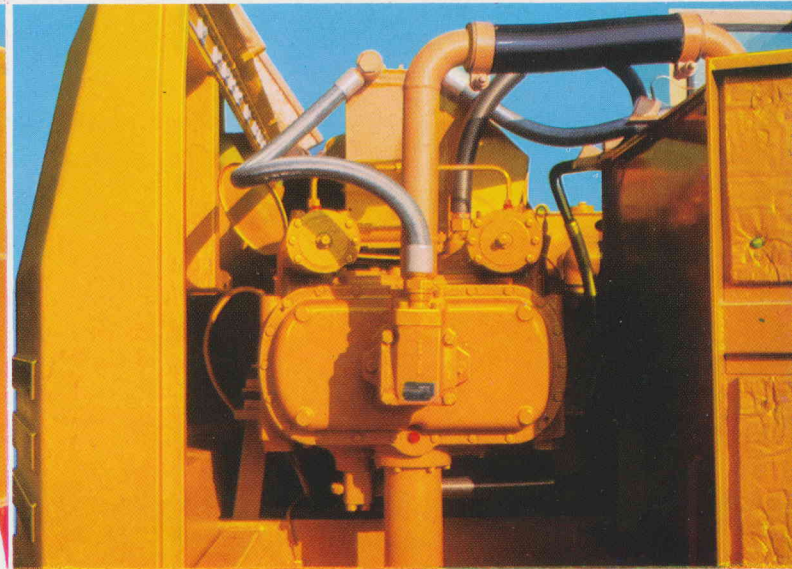
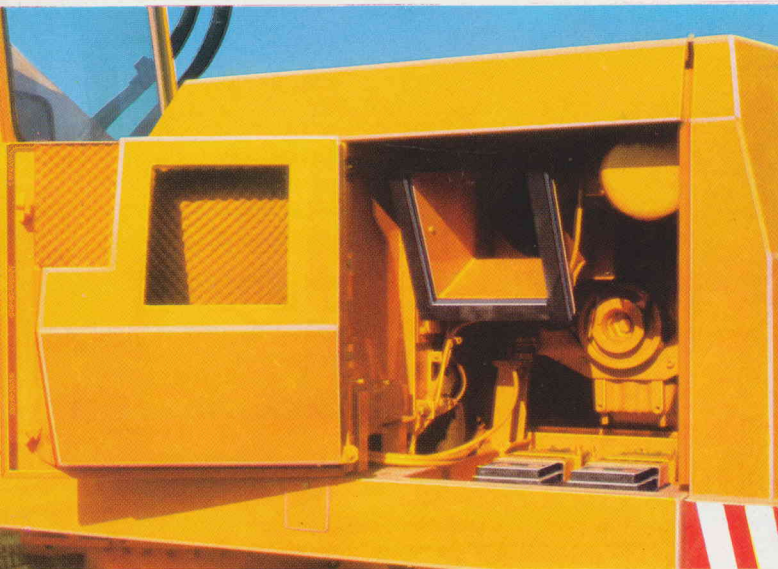
Rigidly mounted bearings and vast lifting force reserves.

Essential for an excavator with a wide range of applications.

For instance, two lift rams of generous size with external bearings. Cast caps to protect the bearing pivots.

High grade, carefully inspected materials. Only the finest quality materials are used for the hydraulic rams. Piston rods and bearing pivots are drop forged from a single ingot.

No going is too tough for an excavator built to these standards.



Sound insulation as standard equipment.

Where else is this a standard feature in this size category?

Both engine and pump compartments are fully sound insulated. Noise level in service is 72 dB (A).

One of the few excavators that it's difficult to hear.

Just as much power as you happen to need.

The duplex pump is controlled by a total power requirement system, and adapts to the necessary working pressure and operating speed at any given moment.

A separate cooling circuit prevents any risk of overheating however arduous operating conditions may be.

If ever an excavator could be regarded as reliable, this is it.

Confidence in the design of each detail inspires confidence in the entire excavator.

Sometimes an excavator operator has to remain in the cab for hours on end.

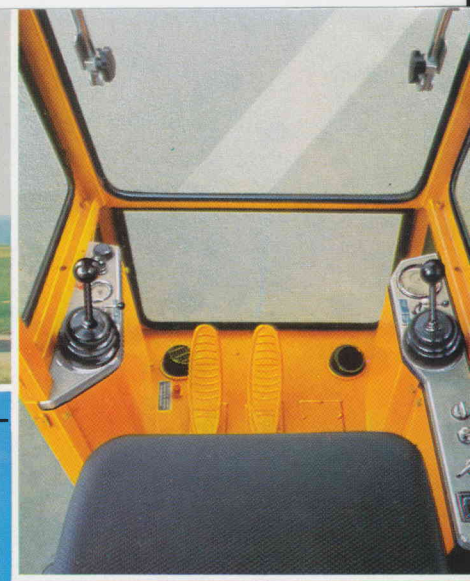
He deserves anything we can do to make his job easier. For instance, good all-round vision. A large glazed area on all sides. An opening front windshield. Windshield washer fitted as standard. Ease of cab access with well-positioned grab handles. Cab lined with sound absorbing materials to reduce interior noise level. Standard heater and fresh air ventilation system. Adjustable roof ventilator flap. Comfortable, adjustable seat.



Always there when it's needed - and fast!

The large fleet of after-sales service and repair trucks. They put matters right on the spot.

But with this excavator, you won't be seeing so much of them!



Operation couldn't be more simple.

The R 941 Series B may look pretty tough, but handling it is child's play for the excavator operator.

The twin 4-way action levers are servo assisted. All controls and instruments are carefully located.

An excavator that responds to fingertip control.



Results are better in comfortable working conditions.



Printed in Western Germany.

13e We 8.73 Subject to modification.

LIEBHERR-EXPORT AG, CH-5415 Nussbaumen AG, Schweiz, Telefon: 056/820211, Telex: 53578