



SALES INFO 

Jekko Mini Crane

SPX650
LITHIUM 

SPX650

The most versatile mini crane on the market

Filling the gap between SPX532 and SPX1280



Maximum lifting capacity **5 t**

LS hydraulic system with **Danfoss** hydraulic bank valves

Maximum reachable height of **23.5 m**

Compact dimensions
(4460 x 980 x 2200 mm)

48 V, 400 Ah lithium battery supply

New design and steel covers

X-pattern outriggers with **endless options** of stabilization





WATCH VIDEO

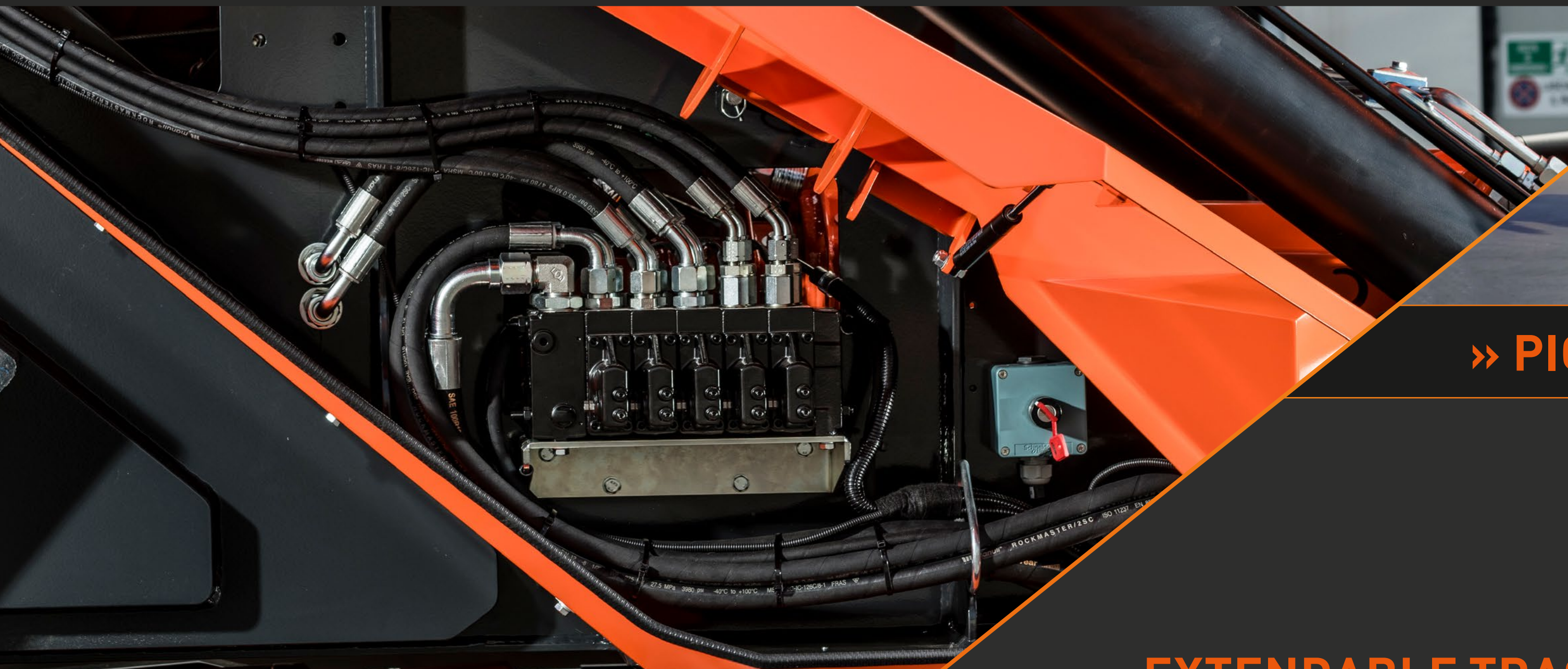


TECHNICAL SOLUTIONS

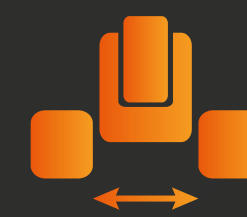


NEW HYDRAULIC SYSTEM

The **100% electronically-operated** supply system by **Danfoss** allows **smooth and accurate crane movements** and the possibility of working **simultaneously** with four functions (eg. jib extension and arm lifting at the same time).



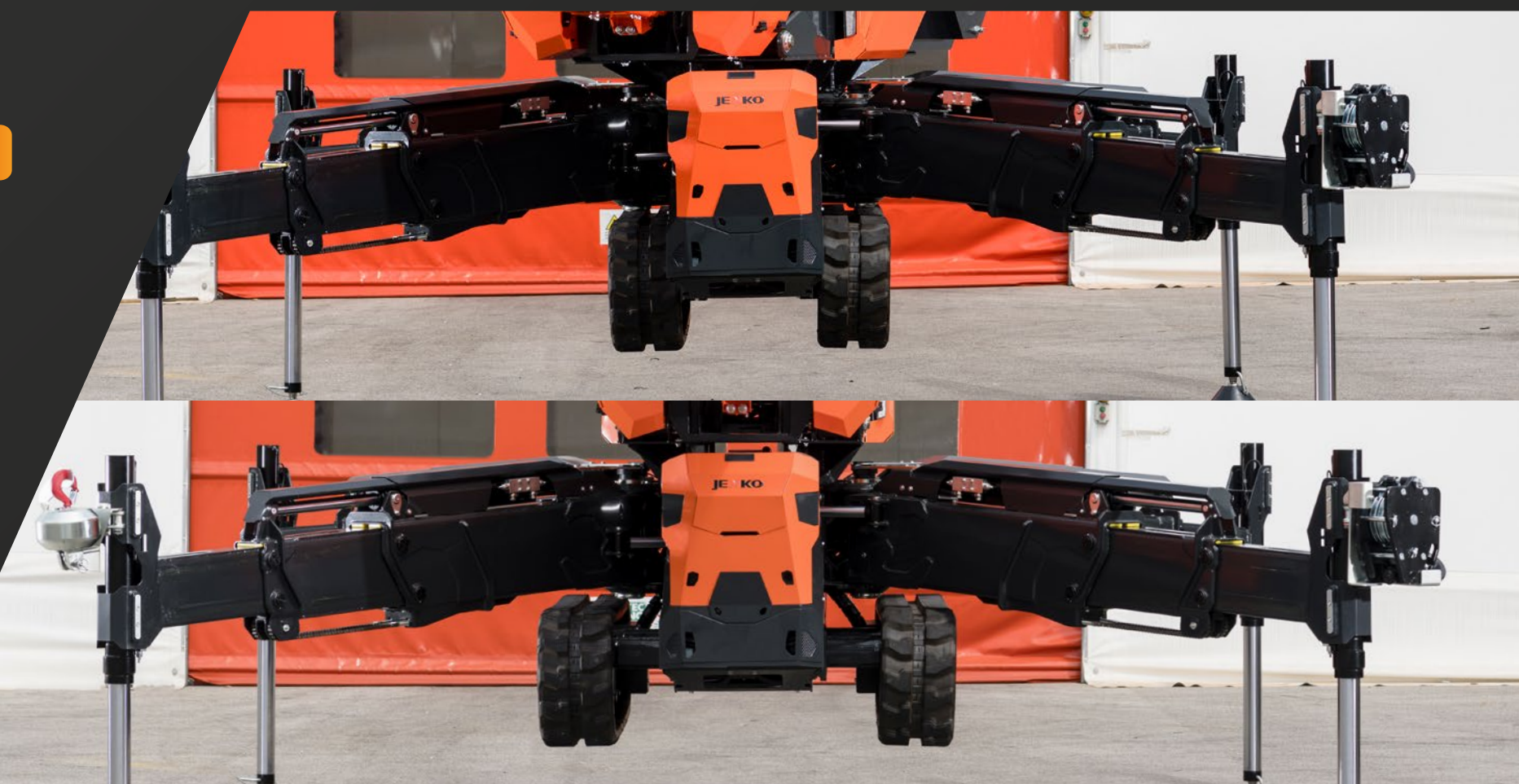
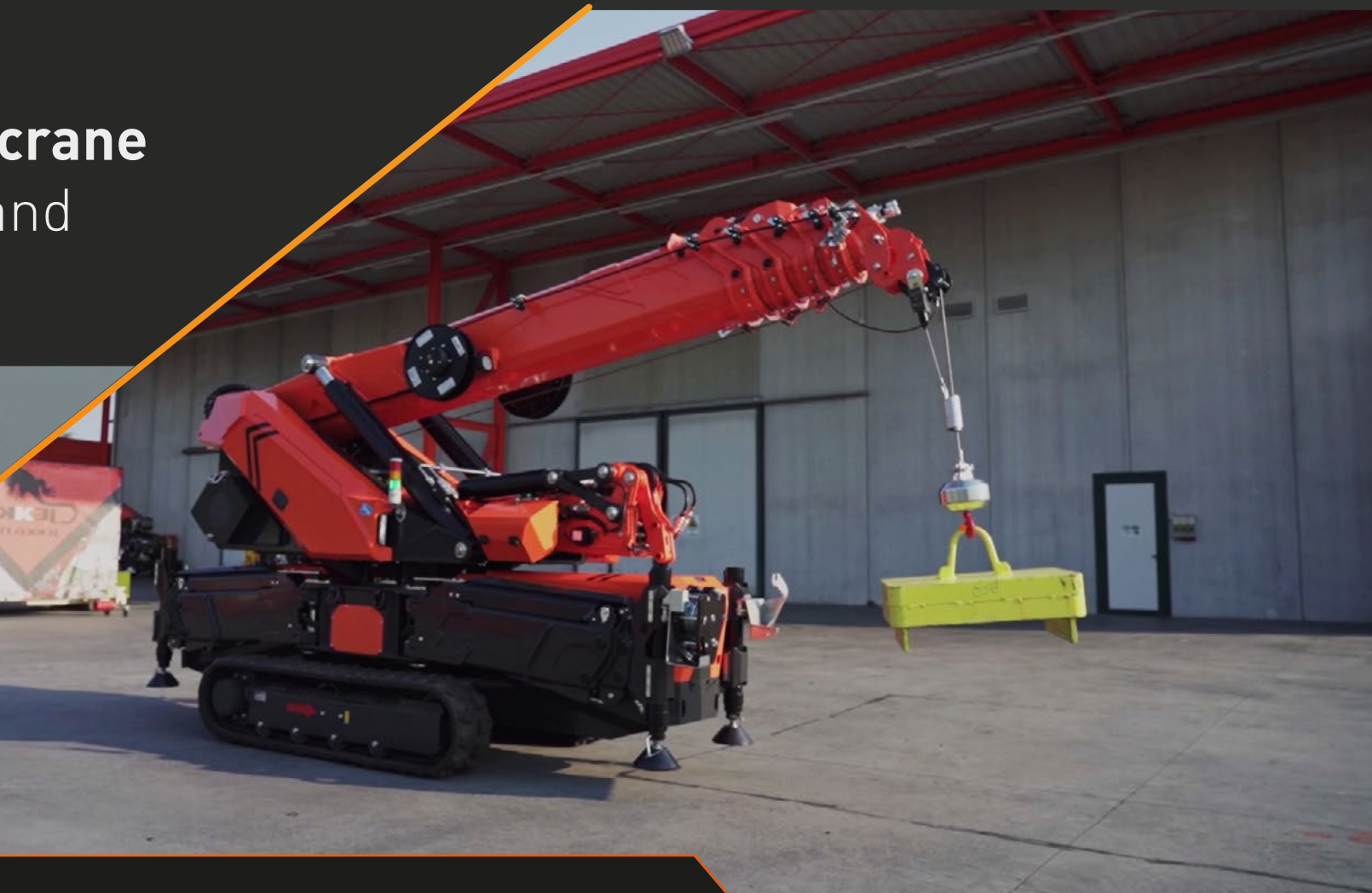
» PICK & CARRY MODE



EXTENDABLE TRACKS

Extendable tracks **operated by radio remote control**, which **enhance stability** while travelling and steering and allow pick & carry mode.

Advantage: Together with the control electronics and the intuitive radio remote control, it **increases** the operator's **feeling of control**.



TECHNICAL SOLUTIONS

STABILIZATION SYSTEM

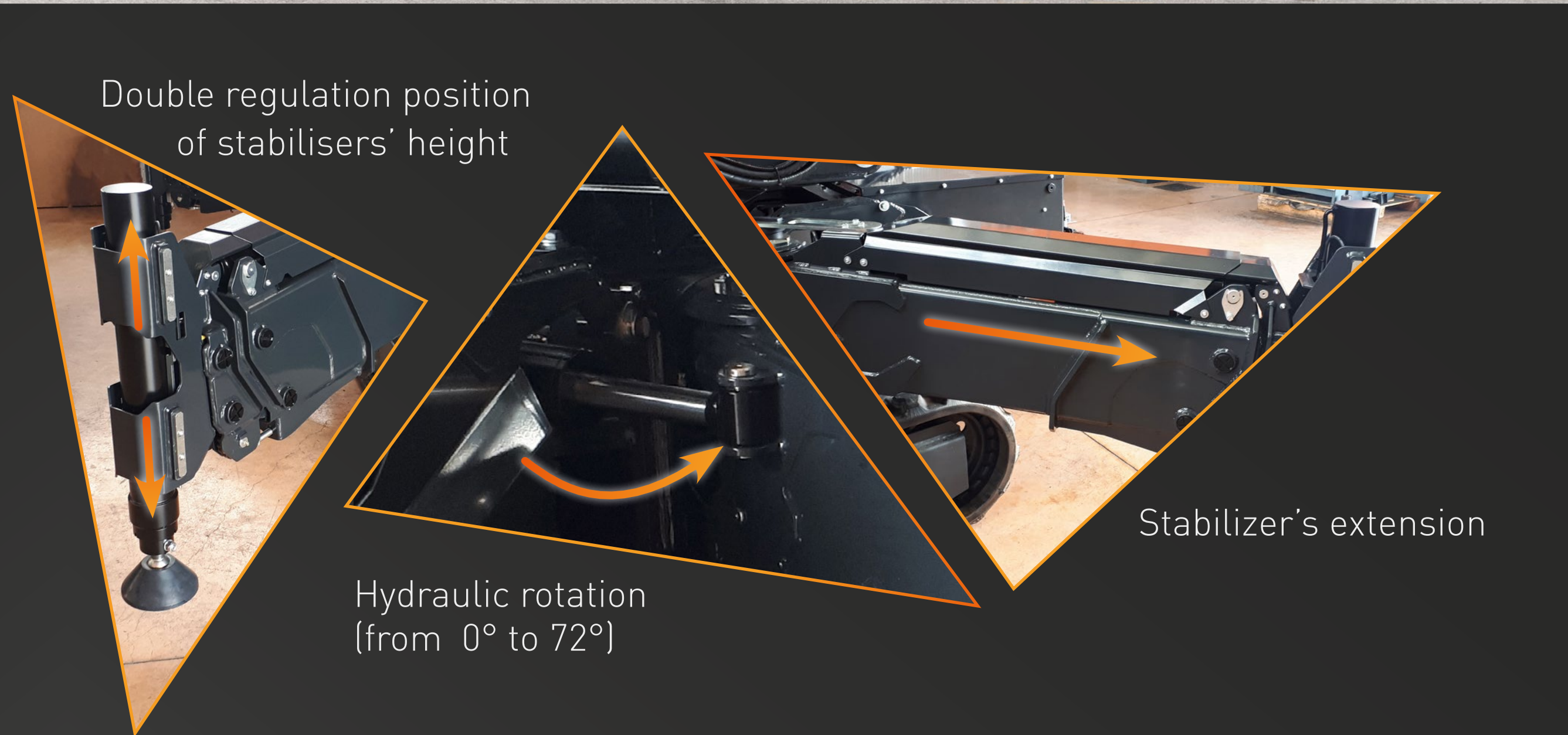
SPX650 features **X-pattern outriggers** with **double extension** (by cylinder and chains) to reduce the minimum stability area. All movements controlled directly by remote-control.

- » **Min** stability area: **2,9 x 2,9 m**
- » **Max** stability area: **4,5 x 4,5 m**

The system considers several factors in order to determine the possible working conditions. Depending on the opening angle and extension of the stabilisers the software can define in **real time** the **maximum safe working load in a specific point**.



- » **5** stabilization levels
- » **Endless** operating configurations



TECHNICAL SOLUTIONS



HYDRAULIC JIB

New hydraulic jib with **3 extensions** (1 hydraulic, 2 by chain), max capacity **1.2 ton**



PPA

Plug&Play Attachment

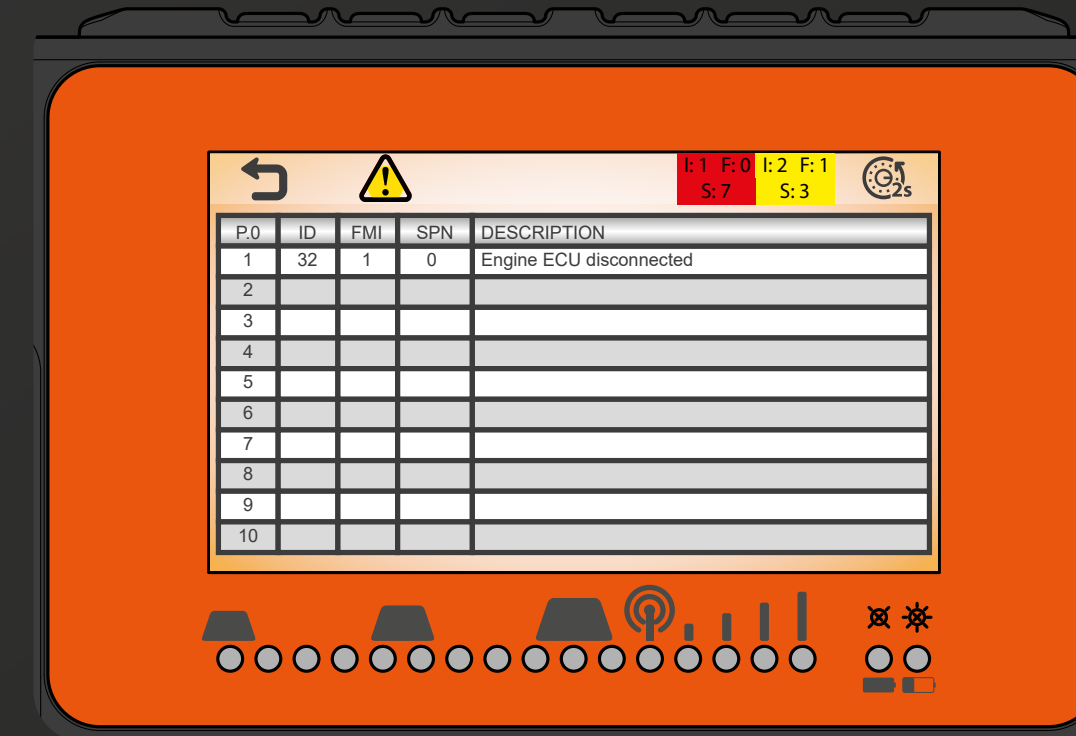
 *Estimated time of installation: 3 minutes!*



- » **Rest position under the main boom:** significant reduction in jib installation and disassembly times
- » The jib can be stored in **three ways**: at rest on the column, on the ground or under the main boom
- » **Negative angle of 15°** for a greater application versatility

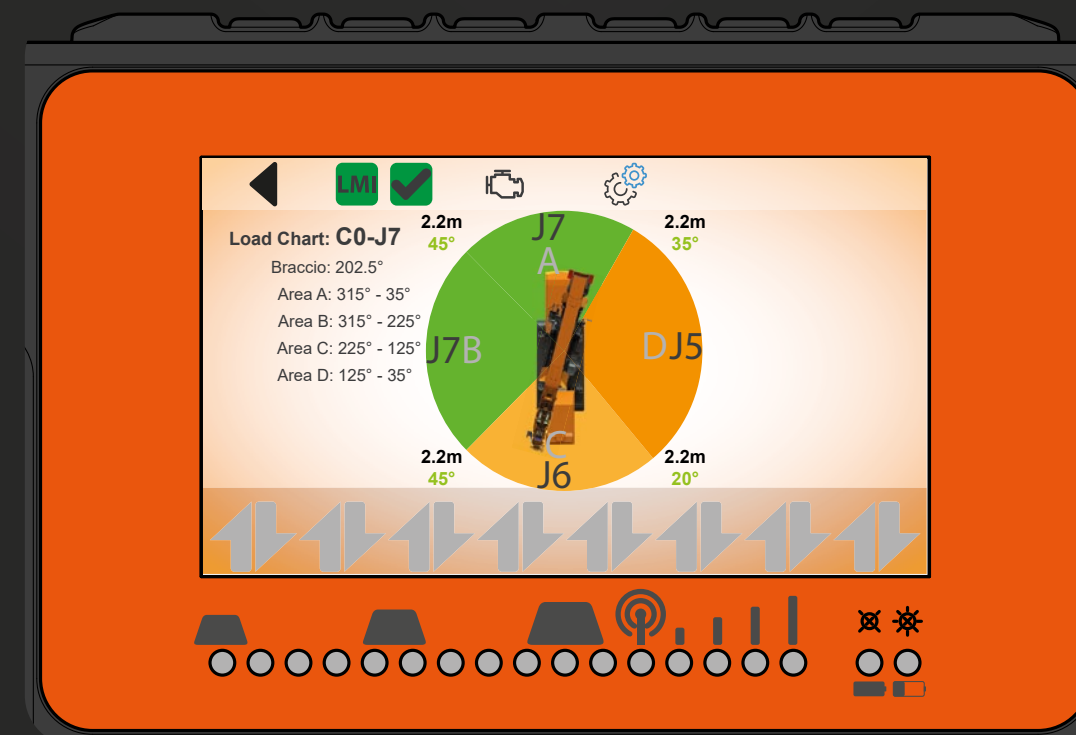
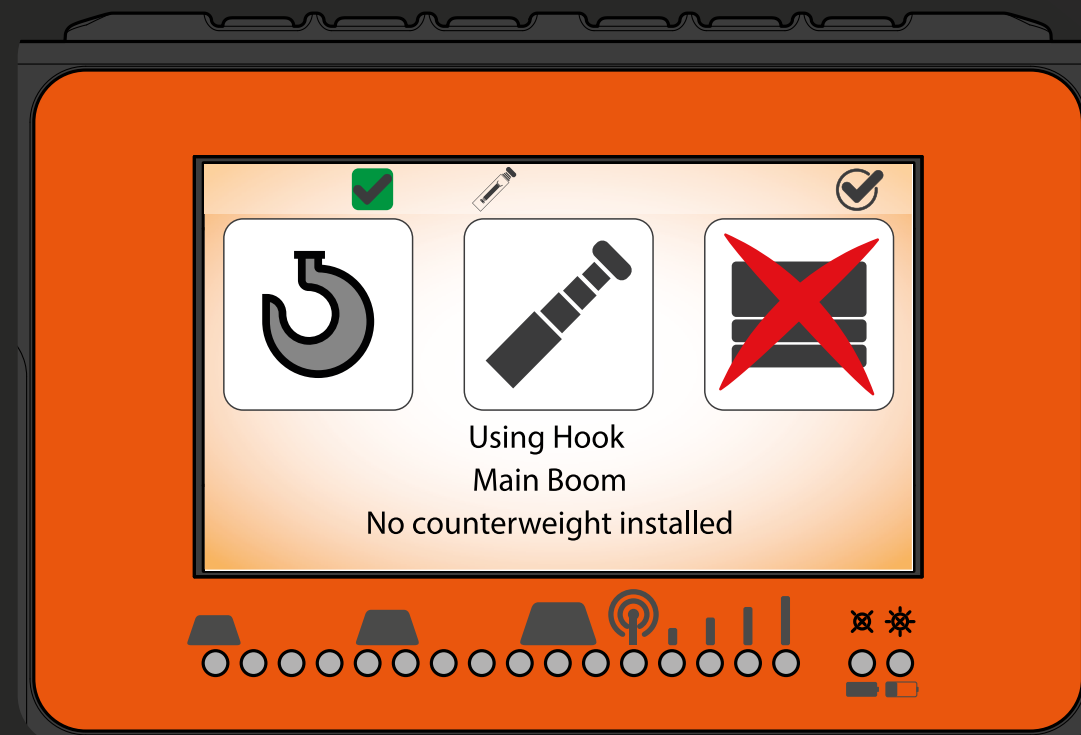
RADIO REMOTE CONTROL

- » **Same** new radio remote control of **new SPX series**, SPX532 and SPX1280
- » **Practical** remote control with **LCD display** and a software **developed internally by Jekko**.
- » **All** mini crane functions can be activated or deactivated **directly** via the radio remote control, using **selectors** that link to **intuitive screens**:
 - boom and winch speed
 - crane's configuration selection (pick & carry, crane, outrigger ascent and descent, tracks)
 - manipulator, including activation and discharge of the vacuum pump
- » Everything is in the operator's hands



- » In case of wrong use or malfunctioning, a textual description of the error is reported directly on the display

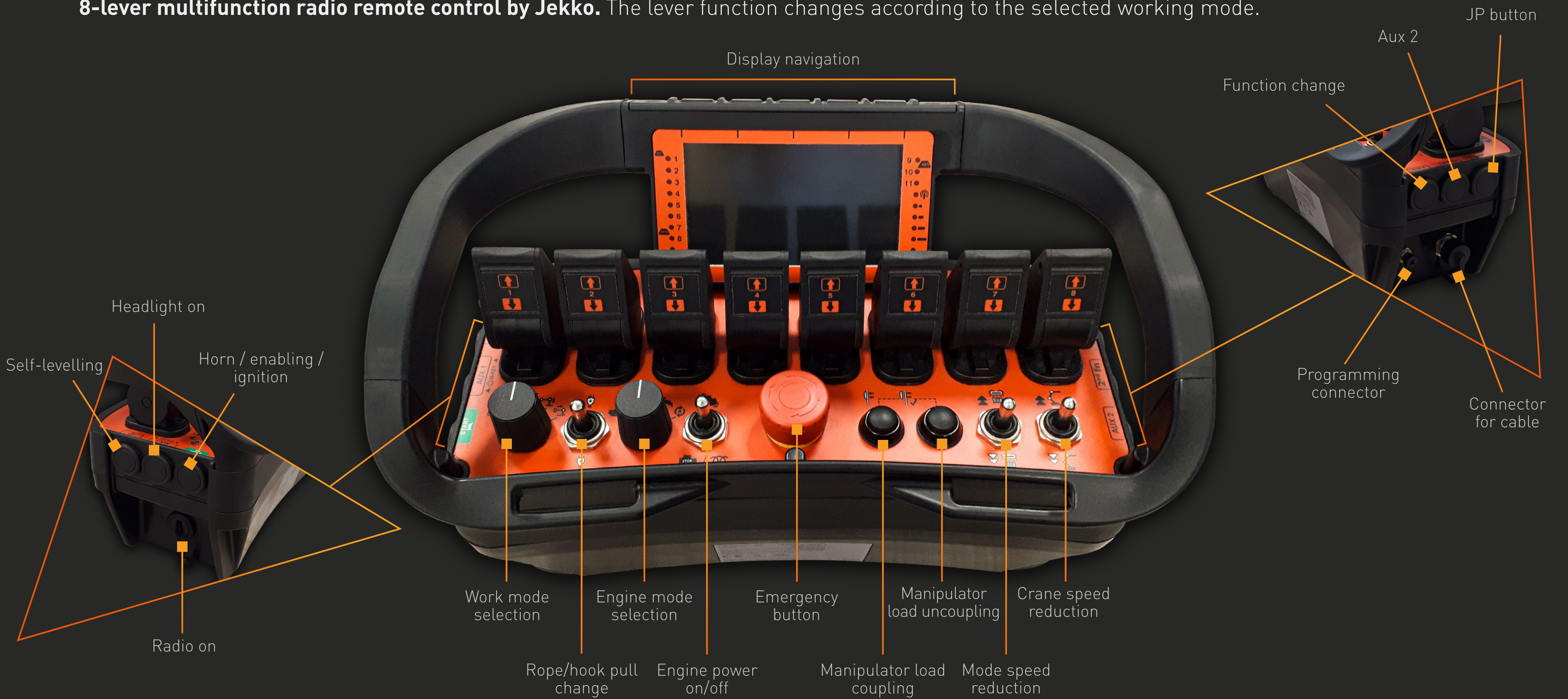
Advantage: the possibility of visualising operating data such as maximum height, maximum SWL, lifted weight and so on allows the operator not only to have the total control on the crane's maximum limits, but also to run simulations before the intervention for a complete certainty about a successful outcome.



TECHNICAL SOLUTIONS

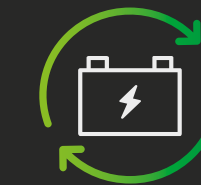
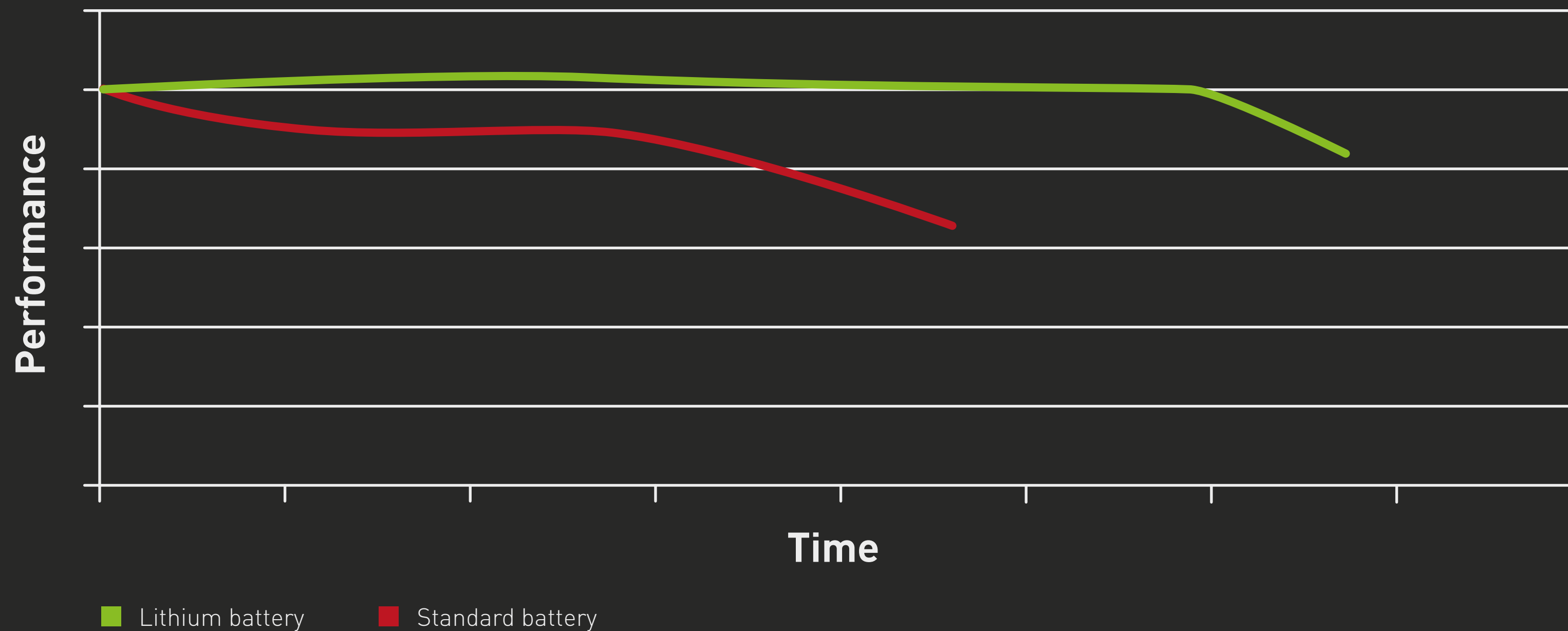
RADIO REMOTE CONTROL

8-lever multifunction radio remote control by Jekko. The lever function changes according to the selected working mode.

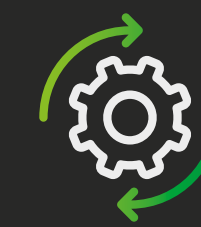


LITHIUM BATTERIES

The crane features a 16 kW engine developed following Jekko's specifications and powered by 48V **lithium battery**.



FULL CHARGE CYCLE
400 V: 3H
220 V: 9H



WORK UNDER CHARGE
Yes

- Advantages**
- possibility of **working indoor** silently and without any kind of emission
 - **unchanged and constant performance** even in case of intense use with heavy loads
 - **long battery life**

TECHNICAL SOLUTIONS



TWO OPERATING MODES: WITH HOOK OR WINCH

Rope	Wire rope	∅	Total length	Max load
		mm	m	kg
	19x7 right lang lay Non rotating	7	60	6400
Hook block	Load	N° of		Block type
	kg	Sheaves	Lines	
	3200	2	4	Multiple fall block
	2400	2	3	
	1600	1	2	Single fall block
800	-	1		



ROTATION WITHIN THE REDUCED STABILIZATION AREA
(2900 x 2900 m)



RUNNER JIB

» 2 T Runner jib stored on board

NEW STEEL SIDE CARTERS WITH LED LIGHTS

ACCESSORIES



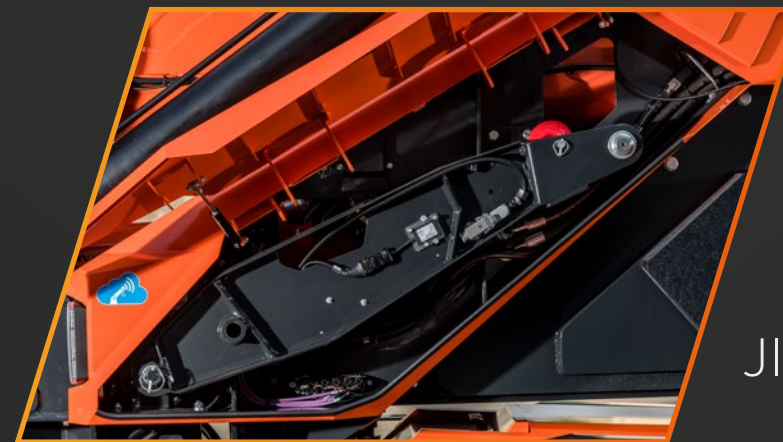
SPX650 can be fitted with many plug&play accessories to meet the different needs



HYDRAULIC JIB

1.2 ton hydraulic jib

JIB1200.2H1MLX



RUNNER JIB

2 ton runner jib

JIB2000GX



HYDRAULIC ACTIVATION

HA-SPX650



PULLEY BLOCK



TOOL BOXES



WHITE TRACKS



EXTERNAL 400 V QUICK CHARGER

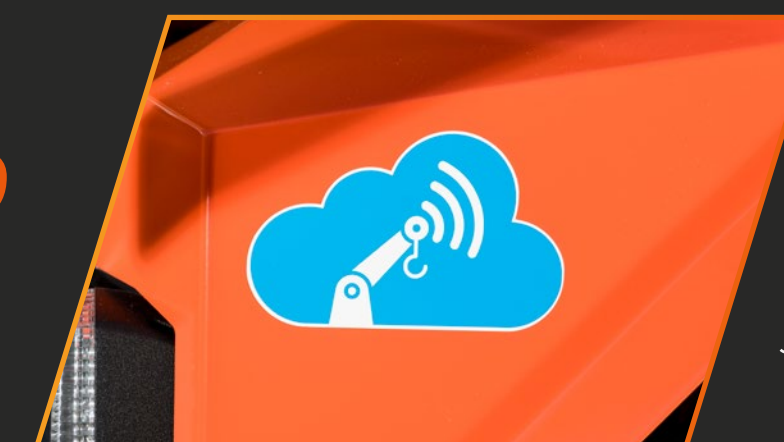


VISUAL ANGLE INDICATOR

VAI



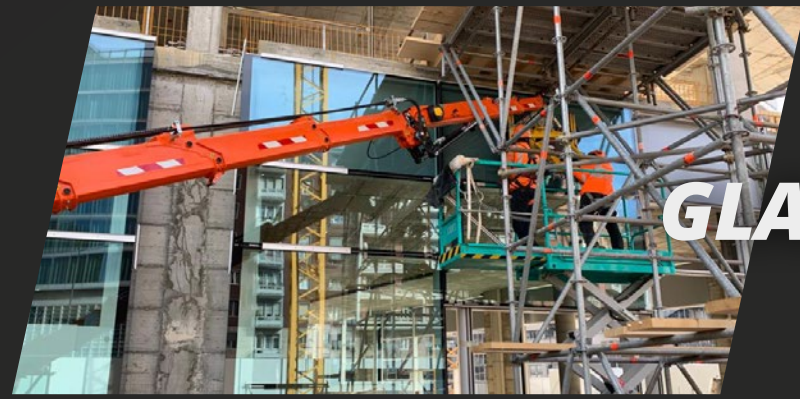
PERSONALIZED COLOR



J-CONNECT

J-CON

APPLICATION SECTORS



GLAZING WORKS



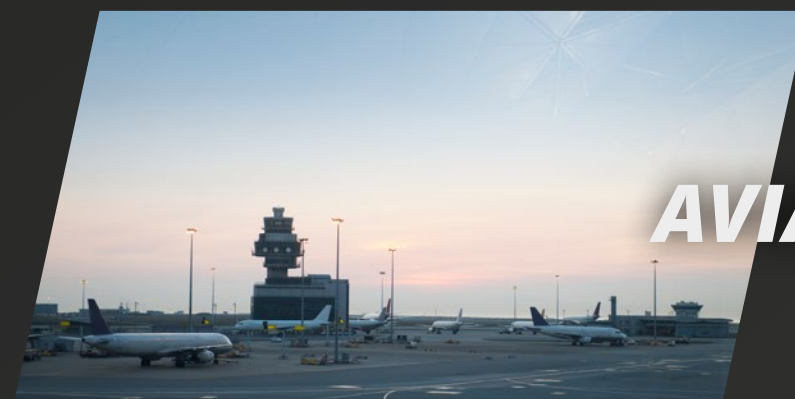
**RESIDENTIAL
CONSTRUCTION**



**INDUSTRIAL
MAINTENANCE**



**MARITIME
INDUSTRY**



AVIATION



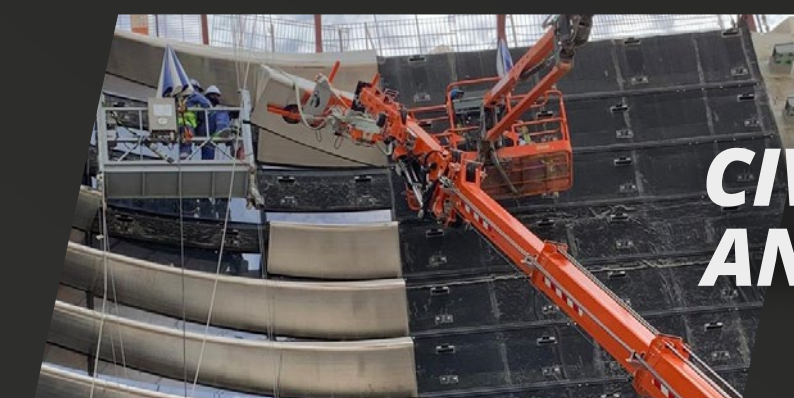
**ARTIFACTS
INSTALLATION**



**OIL AND CHEMICAL
INDUSTRIES**



**LANDSCAPING &
HORTICULTURE**



**CIVIL ENGINEERING
AND MAJOR PROJECTS**

WHY SPX650



- » The machine enters a market segment which is currently **not covered**, the one of **5 tons** maximum lifting capacity cranes, bridging the gap between the SPX532 and SPX1280.
- » SPX650 implements **many state-of-the-art technical solutions** successfully applied to SPX532 and SPX1280.
 - From SPX532: main boom and jib, ways of arranging the jib (especially under the main boom for fast installation), possibility of working with either hook or winch
 - From SPX1280: stabilisation system and hydraulic system
- » Standardisation of hydraulic, electronic and software components which fit SPX532 and SPX180 models too. Same spare parts and after sales support **made easier**.
- » Due to the large demand of battery-powered machines, the **lithium battery version** will be immediately available, batteries supplied by Aliant as already done for SPX532CL2. The goal is to have the same standard of SPX532 and soon of SPX1280 (currently under development).
- » CDH version with **three-phase kit** available from the beginning of 2021.
- » Jekko keeps on focusing on the aesthetics of the machine to fully express Italian design.



For further info and prices:

info@jekko.it

+39 0438 1710083