

THE ESSENCE OF SANY PRODUCT
LIES IN ITS HIGH RELIABILITY



New Generation Hydraulic Excavators

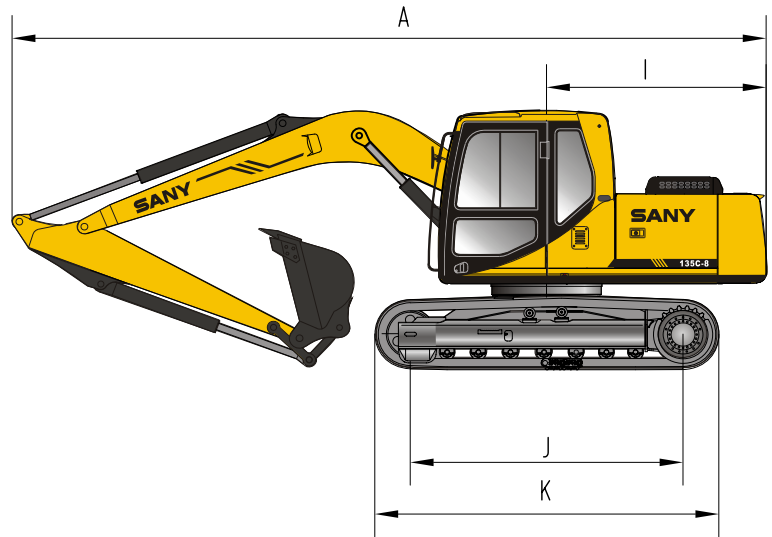
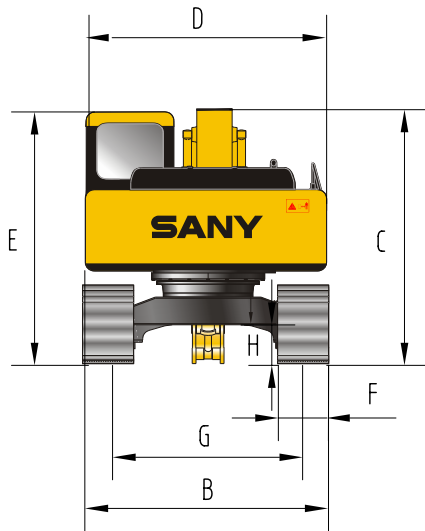
SY135C Series



SANY

Quality changes the world

- Meeting EPA,EU TIER II emission regulations, more powerful drive and lower fuel consumption;
- New high performance Isuzu engine, with lower malfunction ratio and better roughness-wearing;
- Advanced positive flow hydraulic control system, easier operation and higher efficiency;
- More stable, faster, lower cost and higher return on investment;
- Intelligent malfunction diagnosis system, extended overhaul period and lower maintenance cost;
- CE Certification.

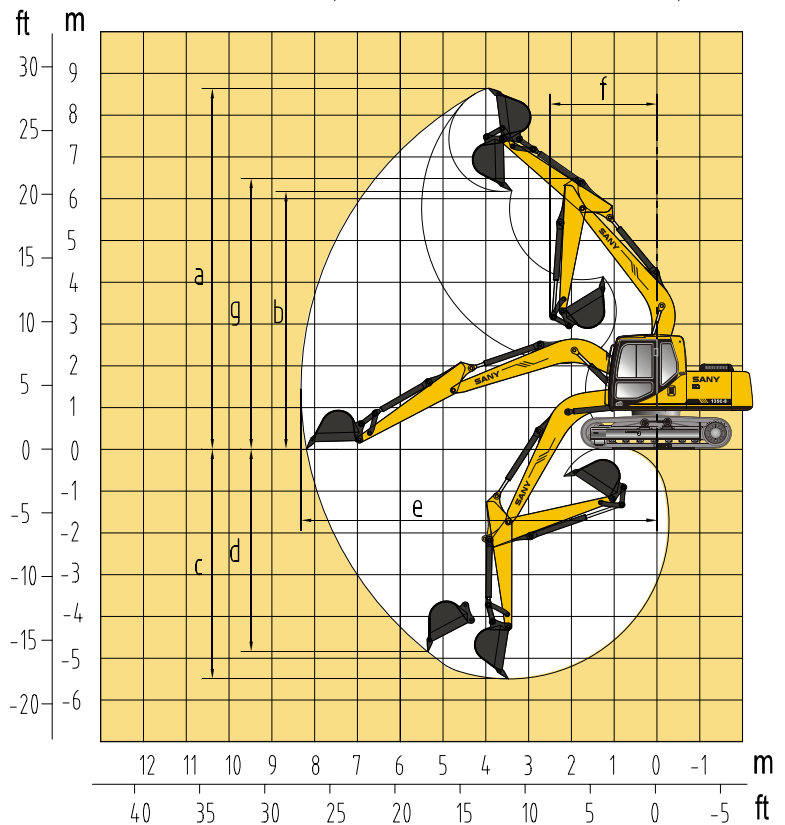


Overall dimension

Model	SY135C
A Transport length	7700mm/25'3"
B Transport width	2550mm/8'4"
C Transport height	2815mm/9'3"
D Upperstructure width	2490mm/8'2"
E Cab height	2740mm/9'
F Std.Track shoe width	500mm/1'8"
G Track gauge	1990mm/6'6"
H Min.ground clearance	422mm/1'5"
I Tail swing radius	2205mm/7'3"
J Length to centers of rollers	2930mm/9'7"
K Track length	3663mm/12'0.2"

Operation range

Model	SY135C
a Max.digging height	8634mm/28'4"
b Max.dumping height	6167mm/20'3"
c Max.digging depth	5376mm/17'7"
d Max.vertical wall digging depth	4850mm/15'11"
e Max.digging reach	8320mm/27'4"
f Min.swing radius	2500mm/8'3"
g Max.height at min.swing radius	6480mm/21'3"



Technical parameters

Model	SY135C
Operating weight	13500kg/29762lb
Std.bucket capacity	0.53m ³ /0.69 yd ³
Rated power	69.6/2200kw/rpm/93.3/2200 hp/rpm
Travel speed(low/high)	5.3/3.55km/h/3.29/2.21mph
Swing speed	12 rpm
Gradeability	70%/35°
Ground press(600mm track)	41.7kPa/6.05 psi
Bucket digging ability	92.7 kN/ 20854 lb
Max.flow of main pump	2×121L/min/2×32gal/min
Relief valve pressure	31.4/34.3MPa/4553/4974psi
Travel hydraulic circuit	34.3MPa/4974psi
Swing hydraulic circuit	27MPa/3915psi
Pilot hydraulic circuit	3.9MPa/565.6psi



Sany Industry Town, Economical and Technological
Development Zone, Kunshan, Jiangsu, China
Zip Code: 215300
Tel: 0512-57831805
Fax: 0512-57831869
After-sales Service Hotline: 4008 28 2318
Consultation/Complaints Hotline: 4008 28 2333
Web: <http://www.sany.com.cn>



Materials and specifications are subject to change without further notice in accordance with our continuous technical innovations. Photos and illustrations may or may not include additional equipments.